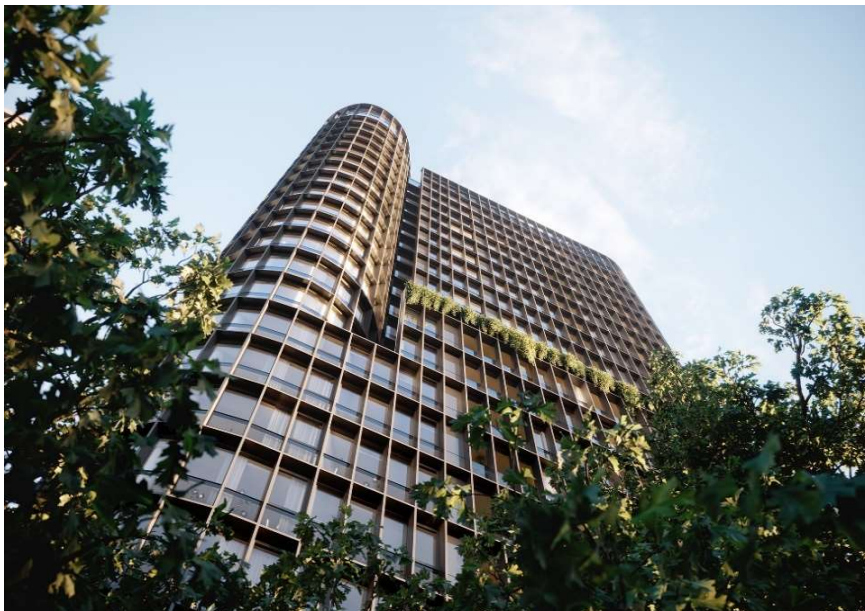


Residential Development New South Wales

GREEN SQUARE, BOTANY ROAD ZETLAND, NSW



Green Square is a mixed use development located just over four kilometres south of Sydney's CBD, approximately four kilometres from Sydney airport, and is conveniently located near the Green Square train station. The Green Square precinct is one of the largest urban renewal projects in Australia and when complete, this development will aim to deliver over 1,600 apartments, along with office and retail space and a substantial public domain within the Green Square Town Centre. In 2020, Mirvac acquired Landcom's ownership of the future stages of Green Square Town Centre, including future apartments, commercial and retail space.

Summary Information - In Progress

| | |
|--|--------------------------------|
| ACQUISITION/AGREEMENT DATE | Mar-12 |
| LOCATION | Zetland |
| PROJECT VALUE (INCL. GST) ¹ | \$2,233.1m |
| TOTAL LOTS ² | 1,612 ² |
| RESIDENTIAL LOTS SETTLEMENT PERIOD | FY17-FY31 |
| OWNERSHIP STRUCTURE | PDA with Landcom / 100% Mirvac |

Note: Image is an artist impression, final design may differ from above image.

1. Indicative only and subject to change. Project value and final lot number will depend on various factors outside of Mirvac's control such as planning, market conditions, construction cost escalation, supply chain risks, weather and other uncertainties

2. Includes retail lots.