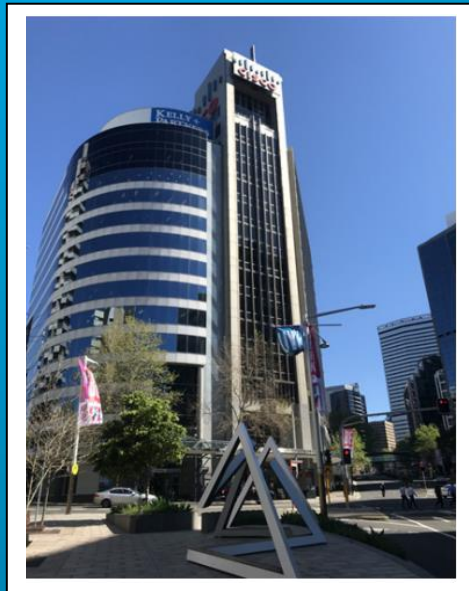


EME Guide

for Site Safety

RFNSA Site No: 2060032
Document Issue No: 3
Document Issue Date: 01/03/2022

Address:
80 Pacific Highway
NORTH SYDNEY NSW 2060



This Report was prepared by: Catalyst ONE Pty Ltd



An Important Message to people accessing this building or structure

There are radiocommunications antennas operating on this building or structure. The antennas on this building or structure produce a form of energy known as electromagnetic energy (EME).

You should not access Exclusion Zones, which are areas close to the antennas.

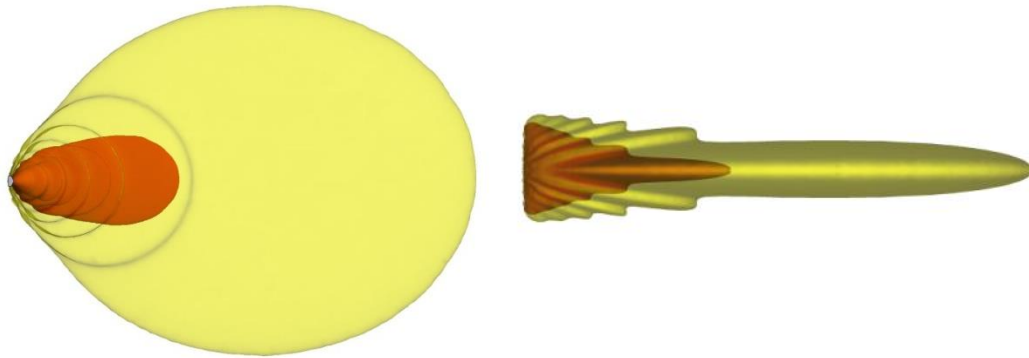
**DO NOT STAND IN FRONT OF ANTENNAS
and
DO NOT Access Red & Yellow Exclusion Zones**

This document will show Exclusion Zones around the antennas, don't enter these areas. The latest version of this EME Guide is accessible at www.rfnsa.com.au or from the mobile carrier or building owner.

Exclusion zones are defined by the Australian EME Standard "ARPANSA Radiation Protection Standard - Maximum Exposure Levels to Radiofrequency Fields (RPS3)."

Make sure you view all the Exclusion Zone drawings so you get a complete understanding of the site.

This Document is Uncontrolled when printed. See www.rfnsa.com.au for the current issue



Red Zone = Exclusion Zone. No access without confirmed transmitter power reduction or transmitter shutdown.



Yellow Zone = Exclusion Zone. Limited access to specially trained personnel (RF Workers).



White Zone = General access

Note - This EME Guide replaces the Radio Communications Site Management Book (RCSMB).

This Document is Uncontrolled when printed. See www.rfnsa.com.au for the current issue

1. Be aware of these access controls on site

If you need to access this site contact the site owner, manager or the Carriers and Radio Service Operators occupying the site.

Access Control Procedures at Site

- The elevated location of the antenna above rooftop level provides a natural height restriction
- Access to the rooftop is restricted by a locked door

2. EME Safe Work Procedures to be followed at this site

1. Be appropriately trained
2. Receive a safety briefing from Site Manager
3. Do not stand in front of antennas
4. Observe safety signs
5. Ensure you view the current version of this EME Guide (www.rfnsa.com.au)
6. Check site drawings & antenna exclusion zones
7. Check for site updates - see caution sheets
8. Use a safe work method statement
9. Use a personal RF monitor
10. Questions - ask for help

3. Carriers and Radio Service Operators on site

Carrier	Antenna	Contact No
Telstra	1	0418 707 000

This Document is Uncontrolled when printed. See www.rfnsa.com.au for the current issue

4. Site owner or manager contact details

Name	Role	Company	Contact Details
Christine Rutherford	Facilities Manager	-	+61 402 897 698 christine.rutherford@mirvac.com

Please Note: The site owner or manager contact information is current at the Issue Date but may change without notice to the Mobile Carriers or Radio Service Operators occupying the site.

Important Information about this EME Guide

Site safety information including exclusion zone diagrams in this EME Guide have an “Issue date” incorporated on each page and are correct for that date.

To ensure that you have the most current site safety information available, check the on-line version of this EME Guide using the RFNSA number reference found on the front cover.

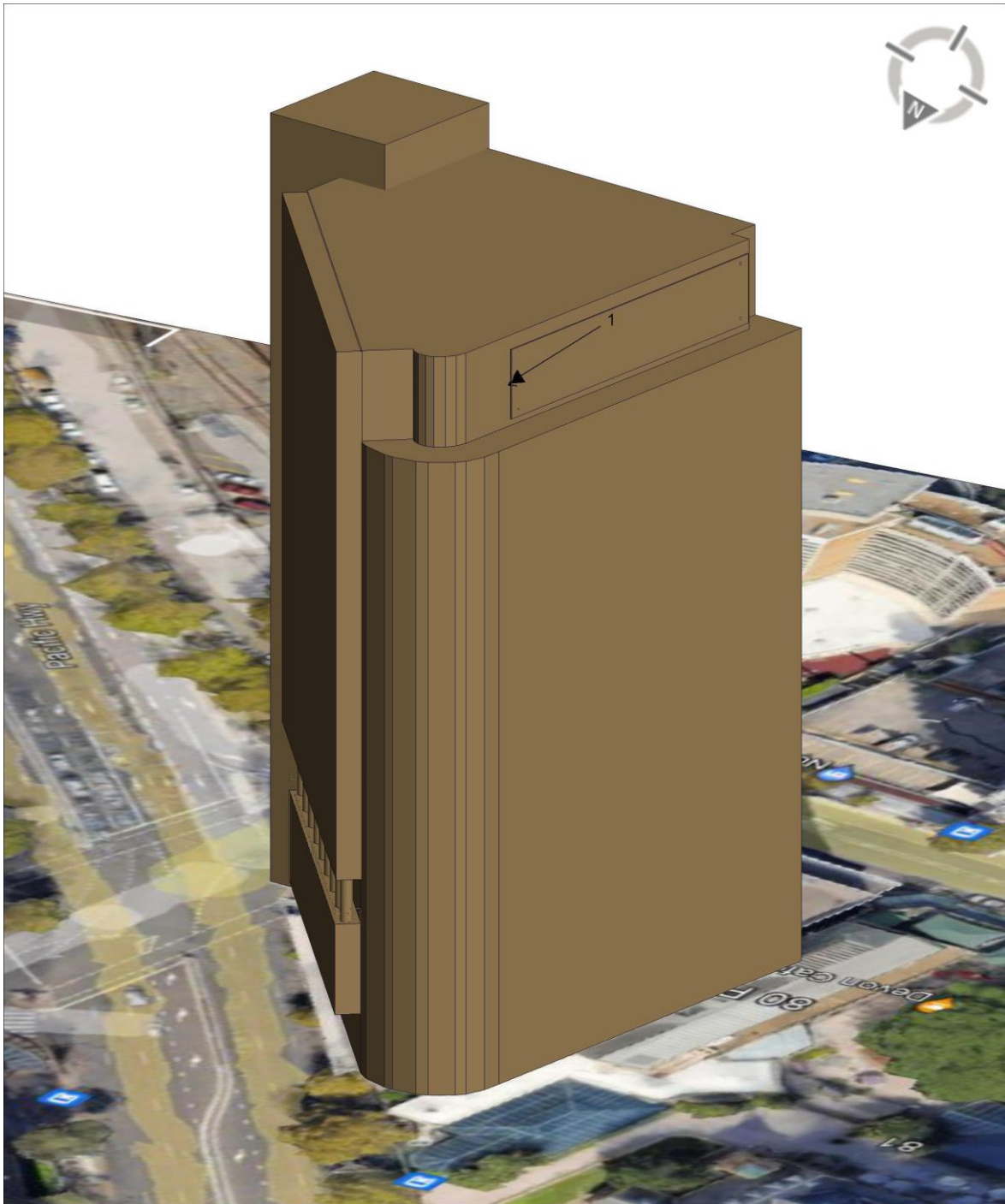
On-line Site Information

MCF National Site Archive www.rfnsa.com.au

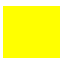
Mobile Site Safety www.mobilesitesafety.com

This Document is Uncontrolled when printed. See www.rfnsa.com.au for the current issue

3D View with Satellite Overlay



Exclusion Zone Legend

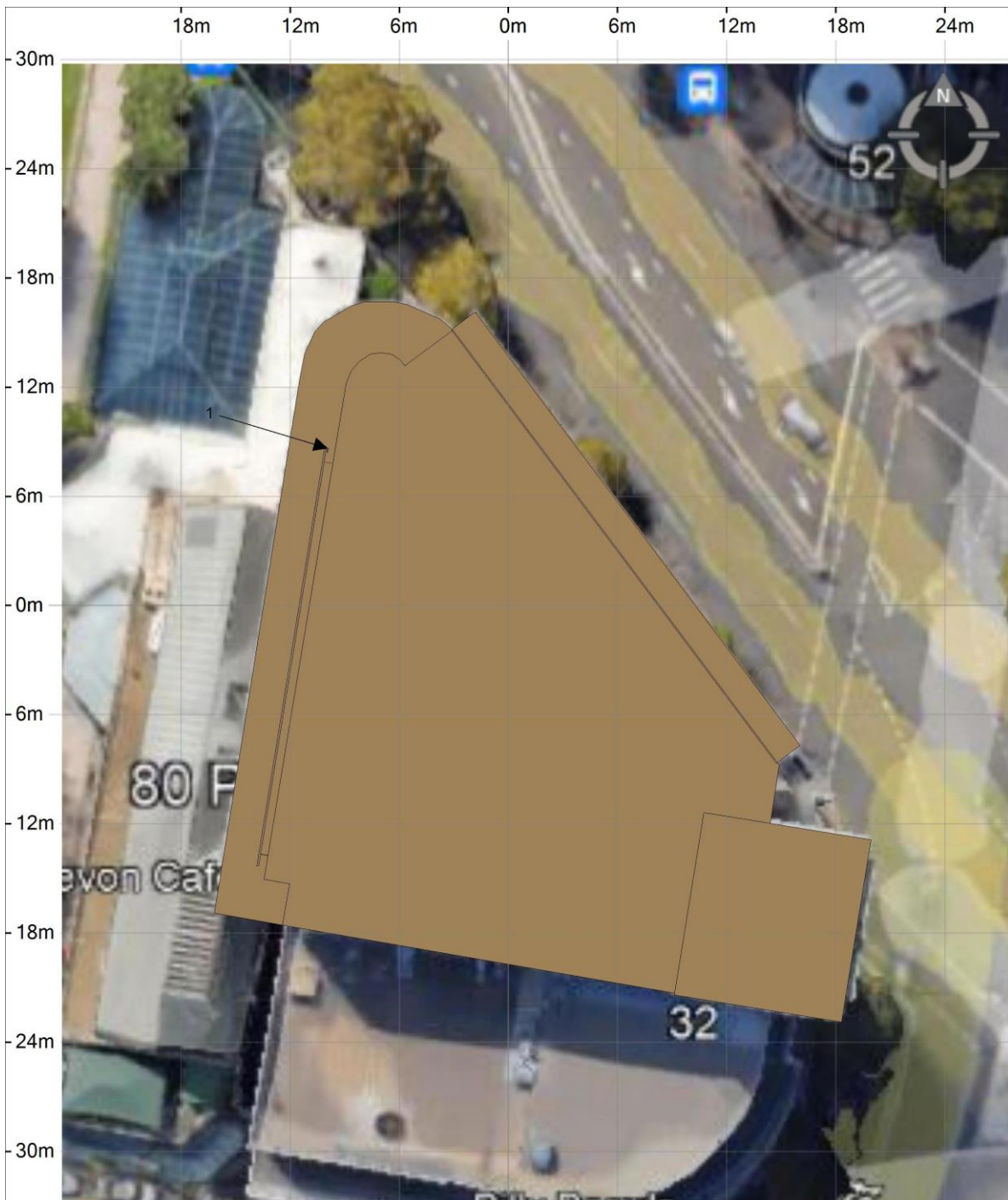
-  Areas above RPS3 public limits
-  Areas above RPS3 occupational limits






Jeff's Height = 1.75m

This Document is Uncontrolled when printed. See www.rfnsa.com.au for the current issue

Plan View with Satellite Overlay

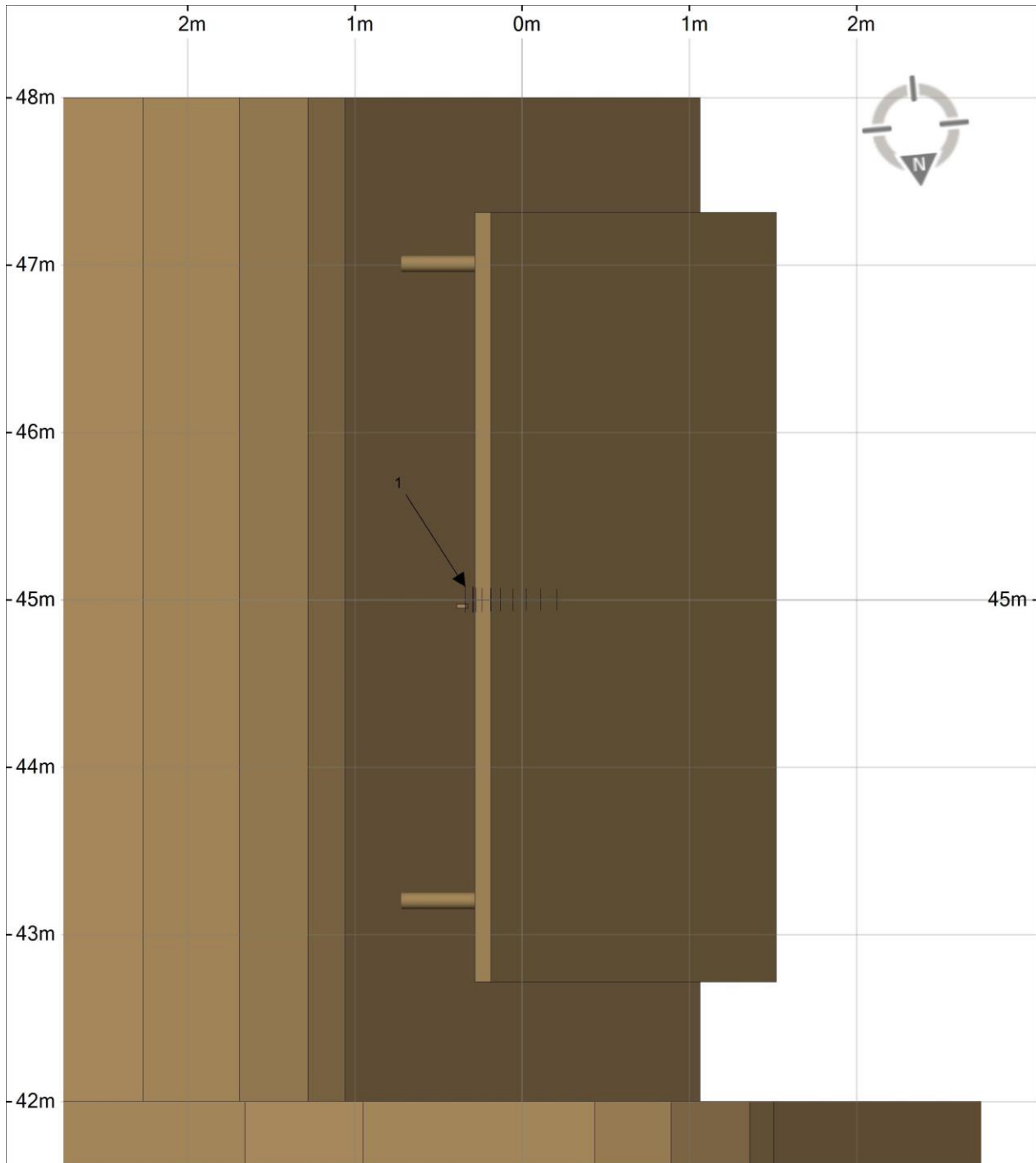


Exclusion Zone Legend

-  Areas above RPS3 public limits
-  Areas above RPS3 occupational limits
-  Jeff's Height = 1.75m

This Document is Uncontrolled when printed. See www.rfnsa.com.au for the current issue

Elevation View - 5 Degrees



Exclusion Zone Legend

- Areas above RPS3 public limits
- Areas above RPS3 occupational limits
- Jeff's Height = 1.75m

This Document is Uncontrolled when printed. See www.rfnsa.com.au for the current issue

Section 3: Equipment Installed at this Site

Equipment List

Structure 2 – Telstra Donor Link

Diagram Ref	Owner Ref	Owner	Type/Make/Model	Height (m)	Bearing (°)	Mech. Tilt (°)	Elec. Tilt (°)	PoI	System/Function /Sector	Power (Watts)
1	D1	Telstra	Andrew/ASPJ810	45	268	0	-	-	Mobile Donor Link	0

This Document is Uncontrolled when printed. See www.rfnsa.com.au for the current issue

Section 4: Site Specific Documents



Donor antenna D1

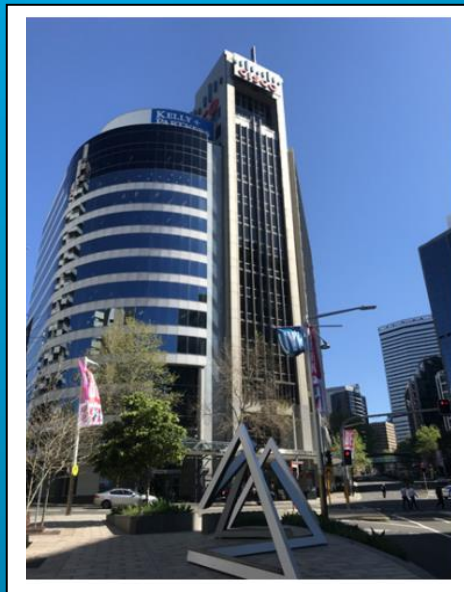
This Document is Uncontrolled when printed. See www.rfnsa.com.au for the current issue

EME Guide

for Site Safety

RFNSA Site No: 2060032
Document Issue No: 3
Document Issue Date: 01/03/2022

Address:
80 Pacific Highway
NORTH SYDNEY NSW 2060



This Report was prepared by: Catalyst ONE Pty Ltd



An Important Message to people accessing this building or structure

There are radiocommunications antennas operating on this building or structure. The antennas on this building or structure produce a form of energy known as electromagnetic energy (EME).

You should not access Exclusion Zones, which are areas close to the antennas.

**DO NOT STAND IN FRONT OF ANTENNAS
and
DO NOT Access Red & Yellow Exclusion Zones**

This Guide is designed to help anyone who is required to work within a building with a distributed antenna system installed. This includes site owners, managers, their associates, contractors and staff.

In-Building Coverage/Cell (IBC), Distributed Antenna Systems (DAS) and Pico cells are all names used to describe In-building radiocommunications systems.

There are no RF hazards associated with the In building Coverage (IBC) Distributed Antenna System (DAS) at this site.

Bio Medical Devices

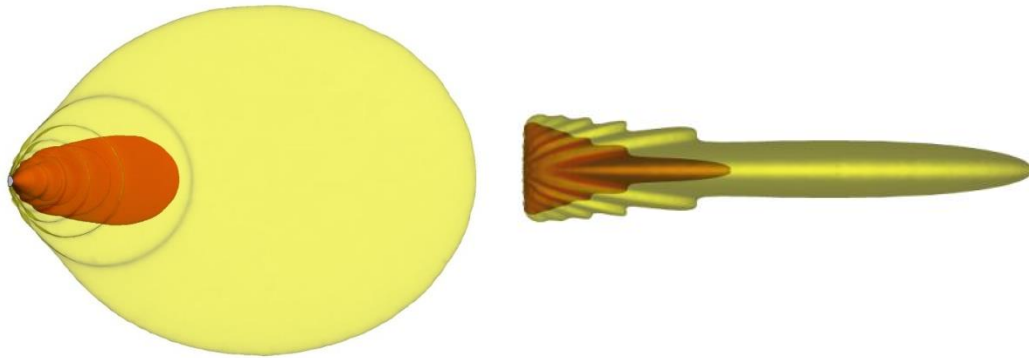
The transmit powers at this site are quite low and there are no RF Hazard existing. Even at very low levels, non-ionising radiation has the potential to adversely affect the operation Bio-medical devices. Persons with such devices must ensure all transmitters are powered-off before working in close proximity to transmitting antennas or around the building ceiling

This document will show Exclusion Zones around the antennas, don't enter these areas. The latest version of this EME Guide is accessible at www.rfnsa.com.au or from the mobile carrier or building owner.

Exclusion zones are defined by the Australian EME Standard "ARPANSA Radiation Protection Standard - Maximum Exposure Levels to Radiofrequency Fields (RPS3)."

Make sure you view all the Exclusion Zone drawings so you get a complete understanding of the site.

This Document is Uncontrolled when printed. See www.rfnsa.com.au for the current issue



Red Zone = Exclusion Zone. No access without confirmed transmitter power reduction or transmitter shutdown.



Yellow Zone = Exclusion Zone. Limited access to specially trained personnel (RF Workers).



White Zone = General access

Note - This EME Guide replaces the Radio Communications Site Management Book (RCSMB).

This Document is Uncontrolled when printed. See www.rfnsa.com.au for the current issue

1. Be aware of these access controls on site

If you need to access this site contact the site owner, manager or the Carriers and Radio Service Operators occupying the site.

Access Control Procedures at Site

- The EME exposures do not exceed the general public limits in the In Building Coverage (IBC) / Distributed Antenna System (DAS) at this site. No access control procedures are required at this site.
- Transmitting power at this site is quite low that no RF Hazards exists. Even at very low levels, non-ionising radiation has the potential to adversely affect the operation of Bio-medical devices. Persons with such devices must ensure all transmitters are powered-off before working in close proximity to transmitting antennas or around the building ceiling.

2. EME Safe Work Procedures to be followed at this site

1. Be appropriately trained
2. Receive a safety briefing from Site Manager
3. Do not stand in front of antennas
4. Observe safety signs
5. Ensure you view the current version of this EME Guide (www.rfnsa.com.au)
6. Check site drawings & antenna exclusion zones
7. Check for site updates - see caution sheets
8. Use a safe work method statement
9. Use a personal RF monitor
10. Questions - ask for help

This Document is Uncontrolled when printed. See www.rfnsa.com.au for the current issue

3. Carriers and Radio Service Operators on site

Carrier	Antenna	Contact No
Optus	Structure 3 – Optus Owned IBC System AB4.1 – AB4.4, AB3.1 – AB3.4, AB2.1 – AB2.4, AB1.1 – AB1.4, AG.1, A1.1 – A1.6, A2.1 – A2.6, A3.1 – A3.6, A4.1 – A4.6, A5.1 – A5.6, A6.1 – A6.6, A7.1 – A7.6, A8.1 – A8.6, A9.1 – A9.6, A10.1 – A10.6, A11.1 – A11.6, A12.1 – A12.6, A13.1 – A13.6, A14.1 – A14.6	1800 505 777
Telstra	Structure 1 – Telstra Owned IBC System A1, A2, A3, A4	0418 707 000

4. Site owner or manager contact details

Name	Role	Company	Contact Details
Christine Rutherford	Facilities Manager	-	+61 402 897 698 christine.rutherford@mirvac.com

Please Note: The site owner or manager contact information is current at the Issue Date but may change without notice to the Mobile Carriers or Radio Service Operators occupying the site.

Important Information about this EME Guide

Site safety information including exclusion zone diagrams in this EME Guide have an “Issue date” incorporated on each page and are correct for that date.

To ensure that you have the most current site safety information available, check the on-line version of this EME Guide using the RFNSA number reference found on the front cover.

On-line Site Information

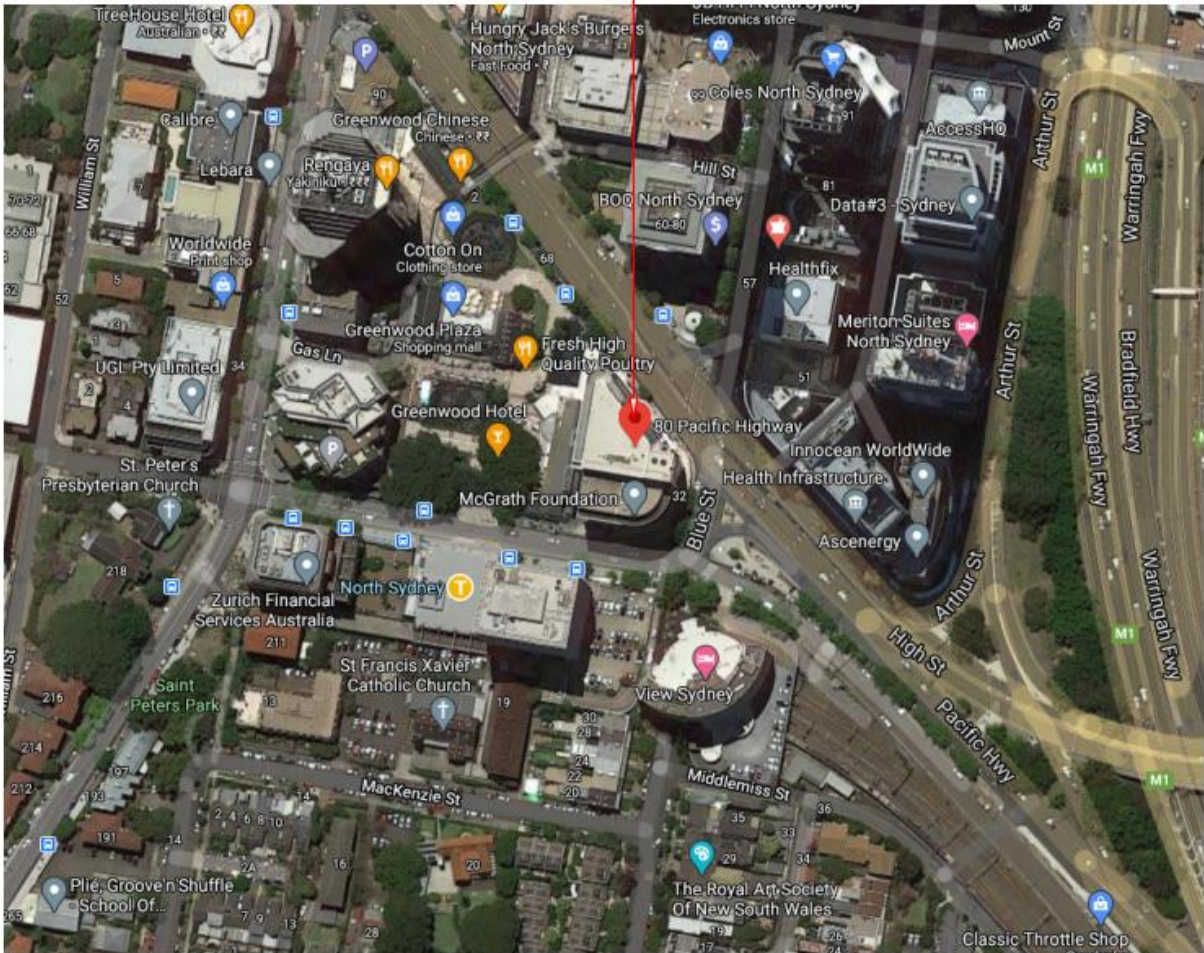
MCF National Site Archive www.rfnsa.com.au

Mobile Site Safety www.mobilesitesafety.com

This Document is Uncontrolled when printed. See www.rfnsa.com.au for the current issue

Section 1: Site Layout

80 PACIFIC HIGHWAY



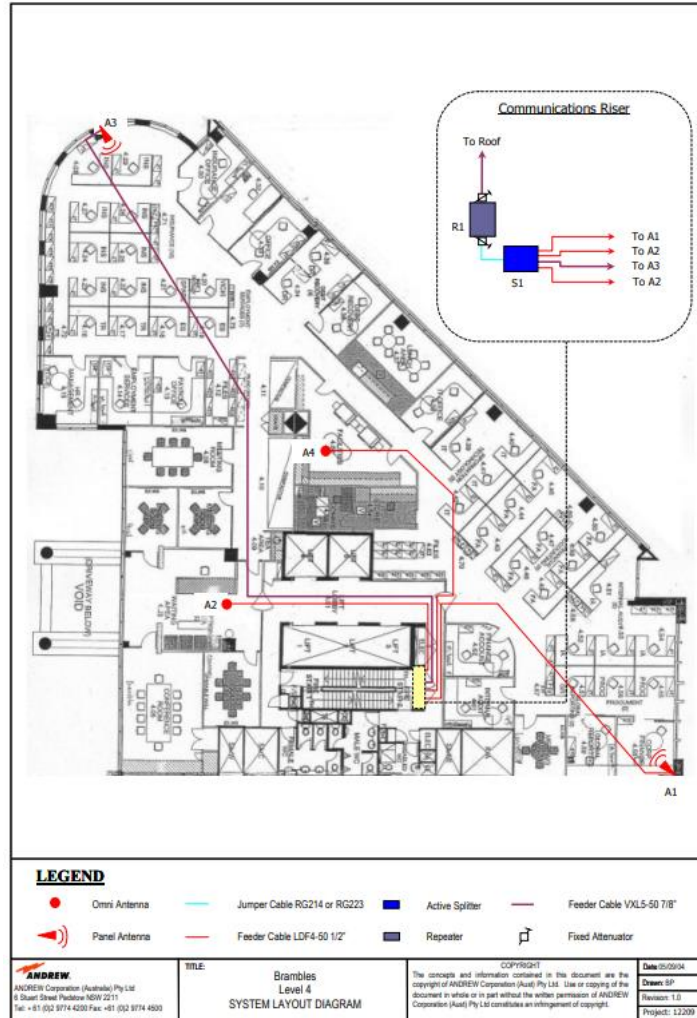
This Document is Uncontrolled when printed. See www.rfnsa.com.au for the current issue

Section 2: Antenna Layout Plan

Structure 1 – Level 4

Note:

1. Labels refer to antenna reference (refer to Section 3 of EME Guide for details).
2. Use of colour on this page is for equipment identification purposed and does not represent an RF hazard. EME levels resulting from the coverage antennas do not exceed general public limit.

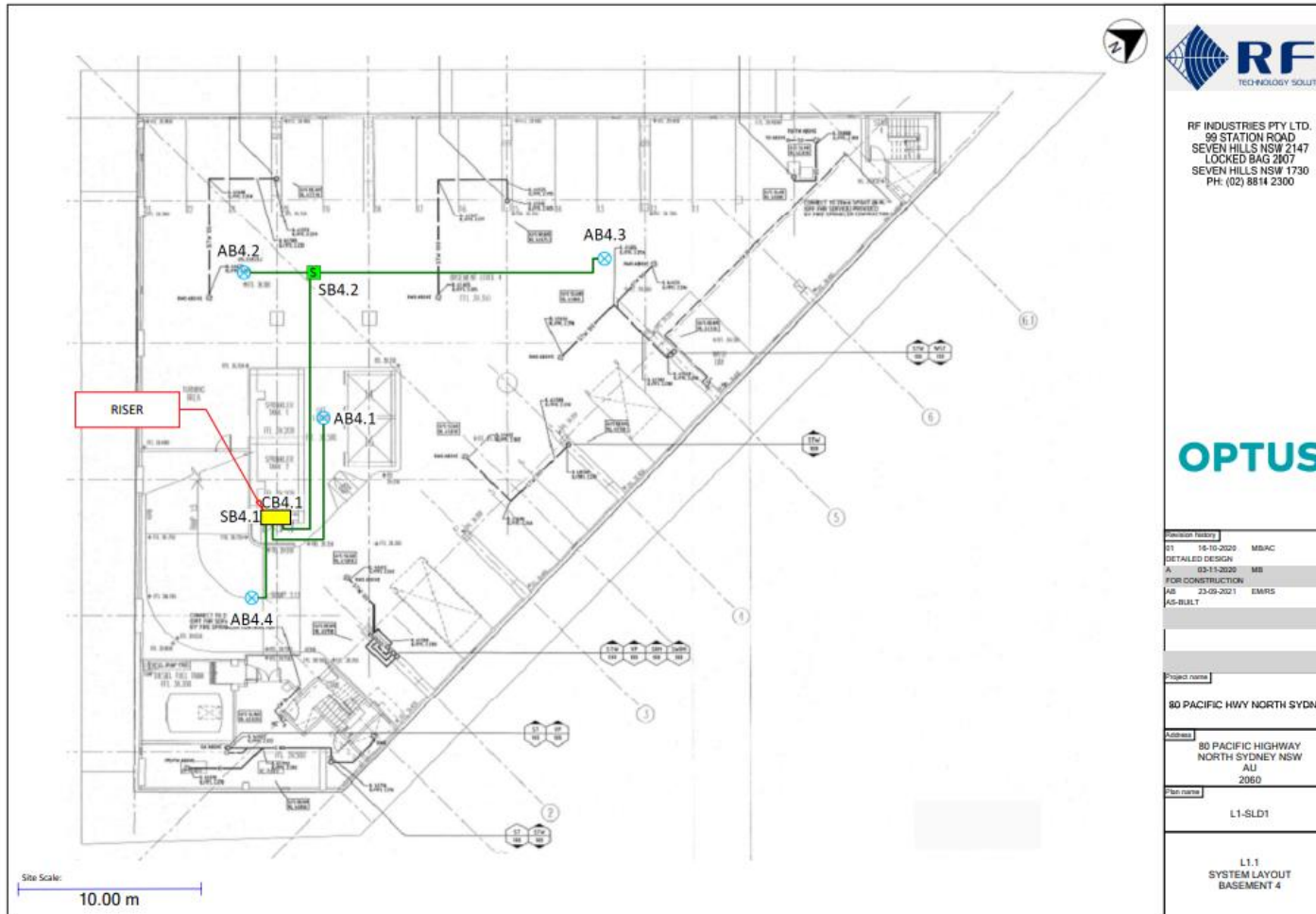


This Document is Uncontrolled when printed. See www.rfnsa.com.au for the current issue

Structure 3 – Basement 4 to Basement 2

Note:

1. Labels refer to antenna reference (refer to Section 3 of EME Guide for details).
2. Use of colour on this page is for equipment identification purposed and does not represent an RF hazard. EME levels resulting from the coverage antennas do not exceed general public limit.



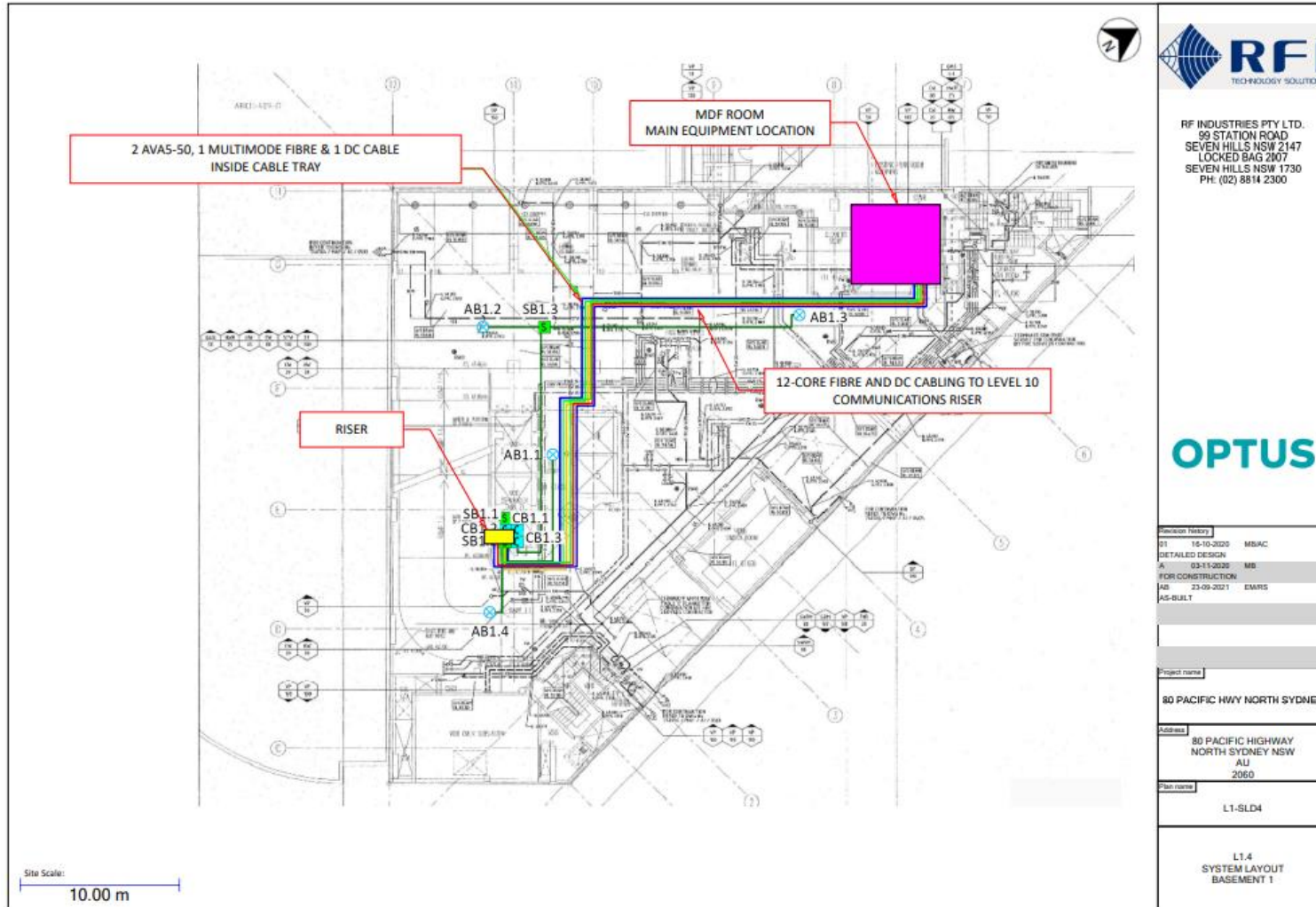
*Note: Same antenna layout from basement 4 to basement 2

This Document is Uncontrolled when printed. See www.rfnsa.com.au for the current issue

Structure 3 – Basement 1

Note:

1. Labels refer to antenna reference (refer to Section 3 of EME Guide for details).
2. Use of colour on this page is for equipment identification purposed and does not represent an RF hazard. EME levels resulting from the coverage antennas do not exceed general public limit.





RF INDUSTRIES PTY LTD.
99 STATION ROAD
SEVEN HILLS NSW 2147
LOCKED BAG 2007
SEVEN HILLS NSW 1730
PH: (02) 8814 2300



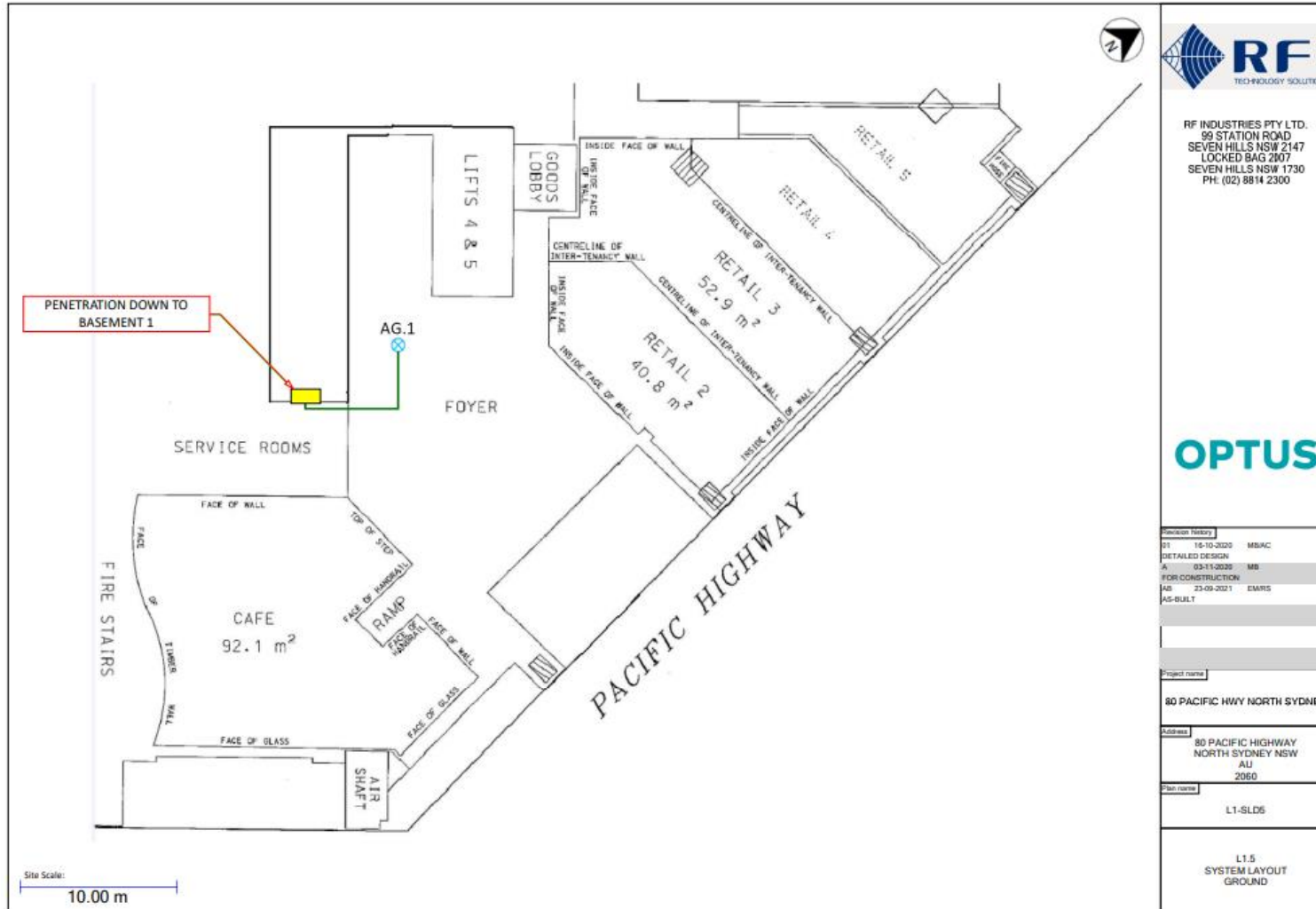
Revision History	
01	15-10-2020 MB/AC
DETAILED DESIGN	
A	03-11-2020 MB
FOR CONSTRUCTION	
100	23-09-2021 EM/RS
AS-BUILT	
Project name	
80 PACIFIC HWY NORTH SYDNEY	
Address	
80 PACIFIC HIGHWAY NORTH SYDNEY NSW AU 2060	
Plan name	
L1-SLD4	
L1.4 SYSTEM LAYOUT BASEMENT 1	

This Document is Uncontrolled when printed. See www.rfnsa.com.au for the current issue

Structure 3 – Ground

Note:

1. Labels refer to antenna reference (refer to Section 3 of EME Guide for details).
2. Use of colour on this page is for equipment identification purposed and does not represent an RF hazard. EME levels resulting from the coverage antennas do not exceed general public limit.



This Document is Uncontrolled when printed. See www.rfnsa.com.au for the current issue

Structure 3 – Level 1

Note:

1. Labels refer to antenna reference (refer to Section 3 of EME Guide for details).
2. Use of colour on this page is for equipment identification purposed and does not represent an RF hazard. EME levels resulting from the coverage antennas do not exceed general public limit.



RFI
TECHNOLOGY SOLUTIONS

RF INDUSTRIES PTY LTD,
99 STATION ROAD
SEVEN HILLS NSW 2147
LOCKED BAG 2807
SEVEN HILLS NSW 1730
PH: (02) 8814 2300

OPTUS

Revision History	
D1	15-10-2020 MBAC
	DETAILED DESIGN
A	03-11-2020 MB
	FOR CONSTRUCTION
AB	23-09-2021 EMRS
	AS-BUILT
Project name	
	80 PACIFIC HWY NORTH SYDNEY
Address	
	80 PACIFIC HIGHWAY NORTH SYDNEY NSW AU 2060
Plan name	
	L1-SLD6
	L1.6 SYSTEM LAYOUT LEVEL 1

This Document is Uncontrolled when printed. See www.rfnsa.com.au for the current issue

Structure 3 – Level 2

Note:

1. Labels refer to antenna reference (refer to Section 3 of EME Guide for details).
2. Use of colour on this page is for equipment identification purposed and does not represent an RF hazard. EME levels resulting from the coverage antennas do not exceed general public limit.



This Document is Uncontrolled when printed. See www.rfnsa.com.au for the current issue

Structure 3 – Level 3 to Level 5

Note:

1. Labels refer to antenna reference (refer to Section 3 of EME Guide for details).
2. Use of colour on this page is for equipment identification purposed and does not represent an RF hazard. EME levels resulting from the coverage antennas do not exceed general public limit.



*Note: Same antenna layout from level 3 to level 5

This Document is Uncontrolled when printed. See www.rfnsa.com.au for the current issue

Structure 3 – Level 6 to Level 12

Note:

1. Labels refer to antenna reference (refer to Section 3 of EME Guide for details).
2. Use of colour on this page is for equipment identification purposed and does not represent an RF hazard. EME levels resulting from the coverage antennas do not exceed general public limit.



*Note: Same antenna layout from level 6 to level 12

This Document is Uncontrolled when printed. See www.rfnsa.com.au for the current issue

Structure 3 – Level 13

Note:

1. Labels refer to antenna reference (refer to Section 3 of EME Guide for details).
2. Use of colour on this page is for equipment identification purposed and does not represent an RF hazard. EME levels resulting from the coverage antennas do not exceed general public limit.

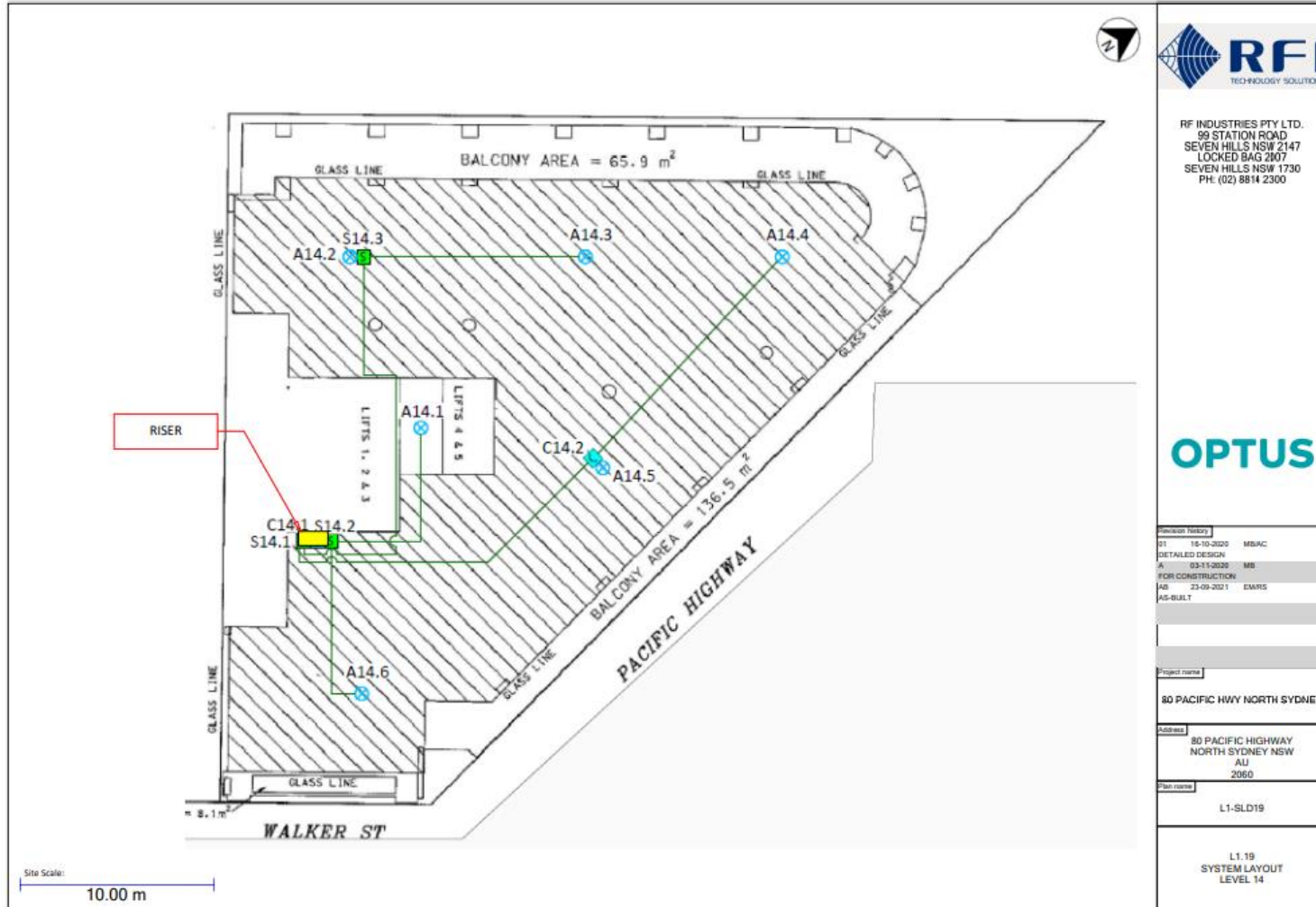


This Document is Uncontrolled when printed. See www.rfnsa.com.au for the current issue

Structure 3 – Level 14

Note:

1. Labels refer to antenna reference (refer to Section 3 of EME Guide for details).
2. Use of colour on this page is for equipment identification purposed and does not represent an RF hazard. EME levels resulting from the coverage antennas do not exceed general public limit.



RFI
TECHNOLOGY SOLUTIONS

RF INDUSTRIES PTY LTD.
99 STATION ROAD
SEVEN HILLS NSW 2147
LOCKED BAG 2007
SEVEN HILLS NSW 1730
PH: (02) 8814 2300

OPTUS

Revision History		
01	16-10-2020	MBAC
		DETAILED DESIGN
A1	03-11-2020	MB
		FOR CONSTRUCTION
AB	23-09-2021	EMRS
		AS-BUILT
Project name		
80 PACIFIC HWY NORTH SYDNEY		
Address		
80 PACIFIC HIGHWAY NORTH SYDNEY NSW AU 2060		
Plan name		
L1-SLD19		
L1.19 SYSTEM LAYOUT LEVEL 14		

This Document is Uncontrolled when printed. See www.rfnsa.com.au for the current issue

Section 3: Equipment Installed at this Site

Equipment List

Structure 1 – Telstra Owned IBC System

Diagram Ref	Antenna Type/Make/Model	Antenna Type	System/Function/Sector	Power (Watts)
A2, A4	Andrew CELLMAX-O-25	Omni	Spare	0
A1, A3	Andrew CELLMAX-D-25	Panel	Spare	0

Structure 3 – Optus Owned IBC System

Diagram Ref	Antenna Type/Make/Model	Antenna Type	System/Function/Sector	Power (Watts)
AB4.1 – AB4.4, AB3.1 – AB3.4, AB2.1 – AB2.4, AB1.1 – AB1.4, AG.1, A1.1 – A1.6, A2.1 – A2.6, A3.1 – A3.6, A4.1 – A4.6, A5.1 – A5.6, A6.1 – A6.6, A7.1 – A7.6, A8.1 – A8.6, A9.1 – A9.6, A10.1 – A10.6, A11.1 – A11.6, A12.1 – A12.6, A13.1 – A13.6, A14.1 – A14.6	Andrew CELLMAX-O-CPUSEi	Omni	Optus LTE1800, NR/LTE 2100, WCDMA2100	0.17 (A6.2)

This Document is Uncontrolled when printed. See www.rfnsa.com.au for the current issue

Section 4: Site Specific Documents

Nil.

This Document is Uncontrolled when printed. See www.rfnsa.com.au for the current issue