

EME Guide



for Site Safety

RFNSA No: 2138005

Document Issue No: 04

Document Issue Date: 4/07/2017

1 Rider Boulevard

RHODES

NSW, 2138



This report was prepared by Corearth Australia Pty Ltd



An Important Message to people accessing this building or structure

There are radiocommunications antennas operating on this building or structure. The antennas on this building or structure produce a form of energy known as electromagnetic energy (EME).

You should not access Exclusion Zones, which are areas close to the antennas.

This EME guide is endorsed by AMTA and the MCF as a standard for EME Site Safety Documentation.

DO NOT STAND IN FRONT OF ANTENNAS

DO NOT ACCESS RED AND YELLOW

This Guide is designed to help anyone who is required to work within a building with a distributed antenna system installed. This includes site owners, managers, their associates, contractors and staff.

In-Building Coverage/Cell (IBC), Distributed Antenna Systems (DAS) and Pico Cells are all names used to describe in-building radiocommunications systems.

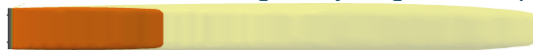
There are no RF hazards associated with the In-Building Coverage (IBC) Distributed Antenna System (DAS) at this site.

Biomedical Devices: The transmit powers at this site are quite low and there are no RF Hazard existing. Even at very low levels, non-ionising radiation has the potential to adversely affect the operation biomedical devices. Persons with such devices must ensure all transmitters are powered-off before working in close proximity to transmitting antennas or around the building ceiling.

This document will show Exclusion Zones around the antennas, don't enter these areas. The latest version of this EME Guide is accessible at www.rfnsa.com.au or from the facility owner, the mobile carrier, or radio service operator or building owners occupying the site.

Exclusion zones are defined by the Australian EME Standard "ARPANSA Radiation Protection Standard - Maximum Exposure Levels to Radiofrequency Fields (RPS3)."

Make sure you view all the Exclusion Zone drawings so you get a complete understanding of the site



Red Zone = Exclusion Zone. No access without confirmed transmitter power reduction or transmitter shutdown



Yellow Zone = Exclusion Zone. Limited access to specially trained personnel (RF Workers).



White Zone = General access

Note: This document replaces the Radio Communications Site Management Book (RCSMB).

This Document is Uncontrolled when printed. See www.rfnsa.com.au for the current issue

1. Be aware of these Access Controls on site

If you need to access this site contact the site owner, manager or the Carriers and Radio Service Operators occupying the site.

Access Control Procedures at Site

For Access to this site contact the site owner, manager or the Carriers and Radio Service Operators occupying the site. Please also refer to the EME Safe Work Procedures Page for this site at www.rfnsa.com.au

Not applicable as there are no macro antennas associated with the In Building Coverage (IBC) Distributed Antennas System (DAS) at this site.

Not applicable as there are no RF Hazards associated with the In Building Coverage (IBC) Distributed Antennas System (DAS) at this site.

2. EME Safe Work Procedures to be followed at this site

1. Be appropriately trained
2. Receive a safety briefing from the Site Manager
3. Do not stand in front of antennas
4. Observe safety signs
5. Ensure you have read the current version of this EME Guide (www.rfnsa.com.au)
6. Check site drawings & antenna exclusion zones
7. Check for site updates - see caution sheets
8. Use a safe work method statement
9. Use a personal RF monitor
10. Questions - ask for help

This Document is Uncontrolled when printed. See www.rfnsa.com.au for the current issue

3. Carriers and Radio Service Operators

Carrier/RSO	Antennas	Contact No.
OPTUS VODAFONE JOINT VENTURE	, Equipment on the DAS/IBC network	- (02) 9342-0890
TELSTRA	, Equipment on the DAS/IBC network	Telstra Wireless Networks 0418 707 000 [24hrs]
VODAFONE	, Equipment on the DAS/IBC network	Network Management Centre 1800 683 683 [24hrs]

4. Site Owner And Manager Contact Details

Name	Role	Company	Contact Details
Alexa Arnott	Site Manager		02 8754 1112 Alexa.Arnott@mirvac.com
MIRVAC GROUP	Site Owner		(02) 9080 8000 enquiries_mfml@mirvac.com.au

Please Note: The site owner or manager contact information is current at the Issue Date but may change without notice to the Mobile Carriers or Radio Service Operators occupying the site.

Important Information About This EME Guide

Site safety information including exclusion zone diagrams in this EME Guide have an “Issue date” incorporated on each page and are correct for that date.

To ensure that you have the most current site safety information available, check the on-line version of this EME Guide using the RFNSA number reference found on the front cover.

On-line Site Information

MCF National Site Archive www.rfnsa.com.au

Mobile Site Safety www.mobilesitesafety.com

This Document is Uncontrolled when printed. See www.rfnsa.com.au for the current issue

Section 1: Site Exclusion Zones

There are no Site Exclusion Zones associated with this site.

Section 2: Detailed Site Exclusion Zone Drawings

There are no Detailed Site Exclusion Zone Drawings associated with this site.

Section 3: Equipment Installed at this Site

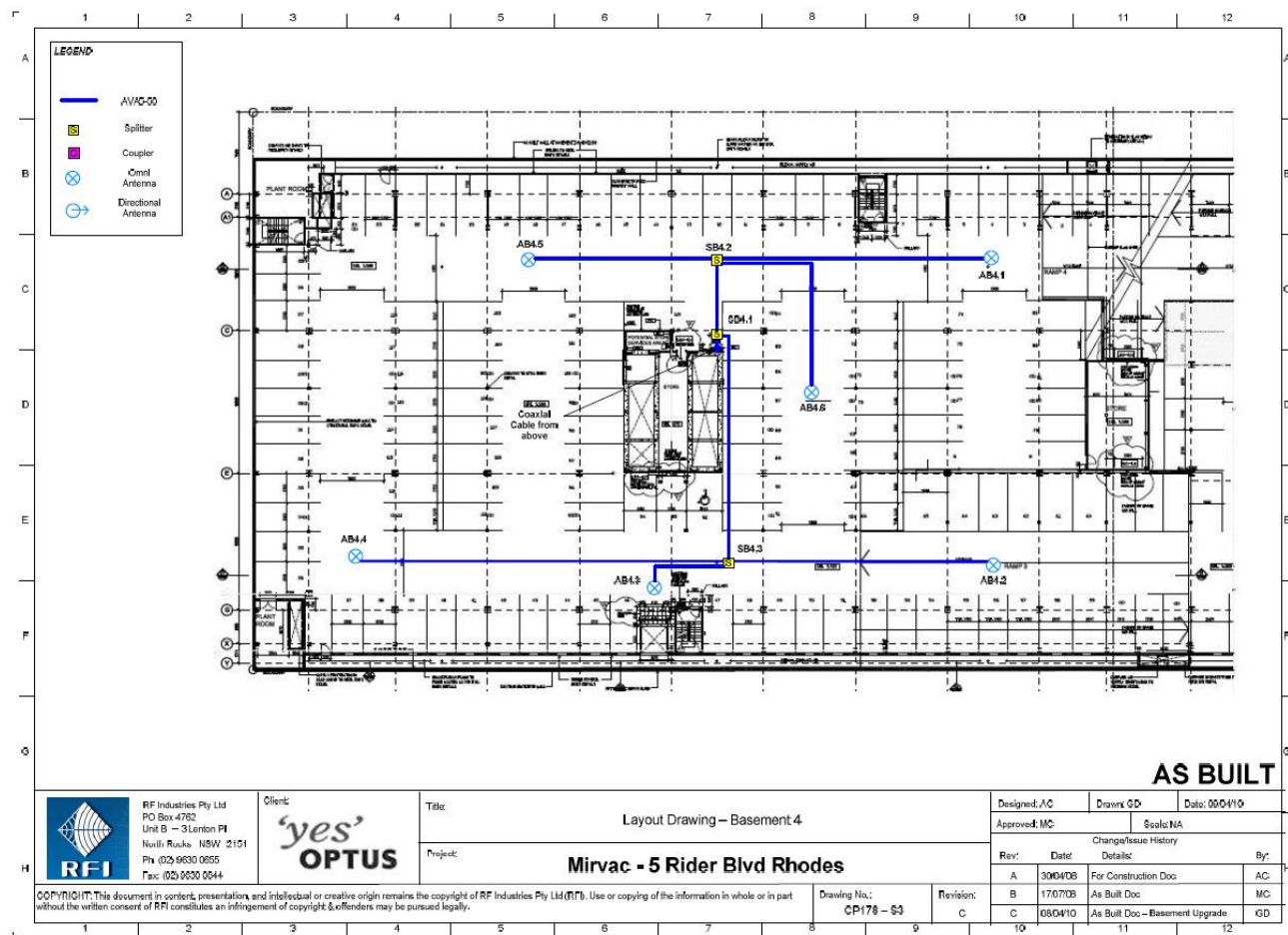
There is equipment connecting into the DAS / IBC network.

Section 4: Site Specific Documents

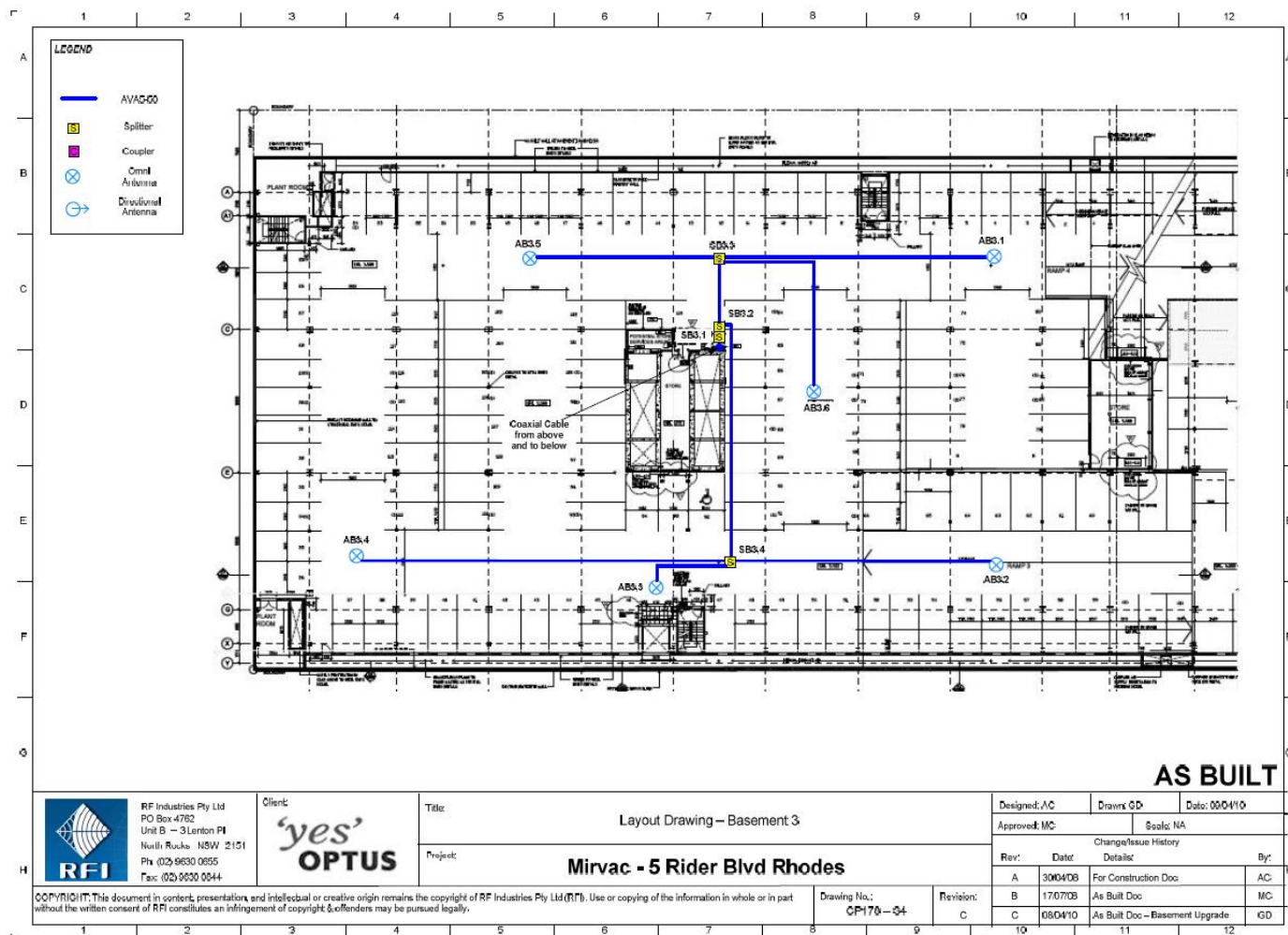
IBC Layouts attached below.

This Document is Uncontrolled when printed. See www.rfnsa.com.au for the current issue

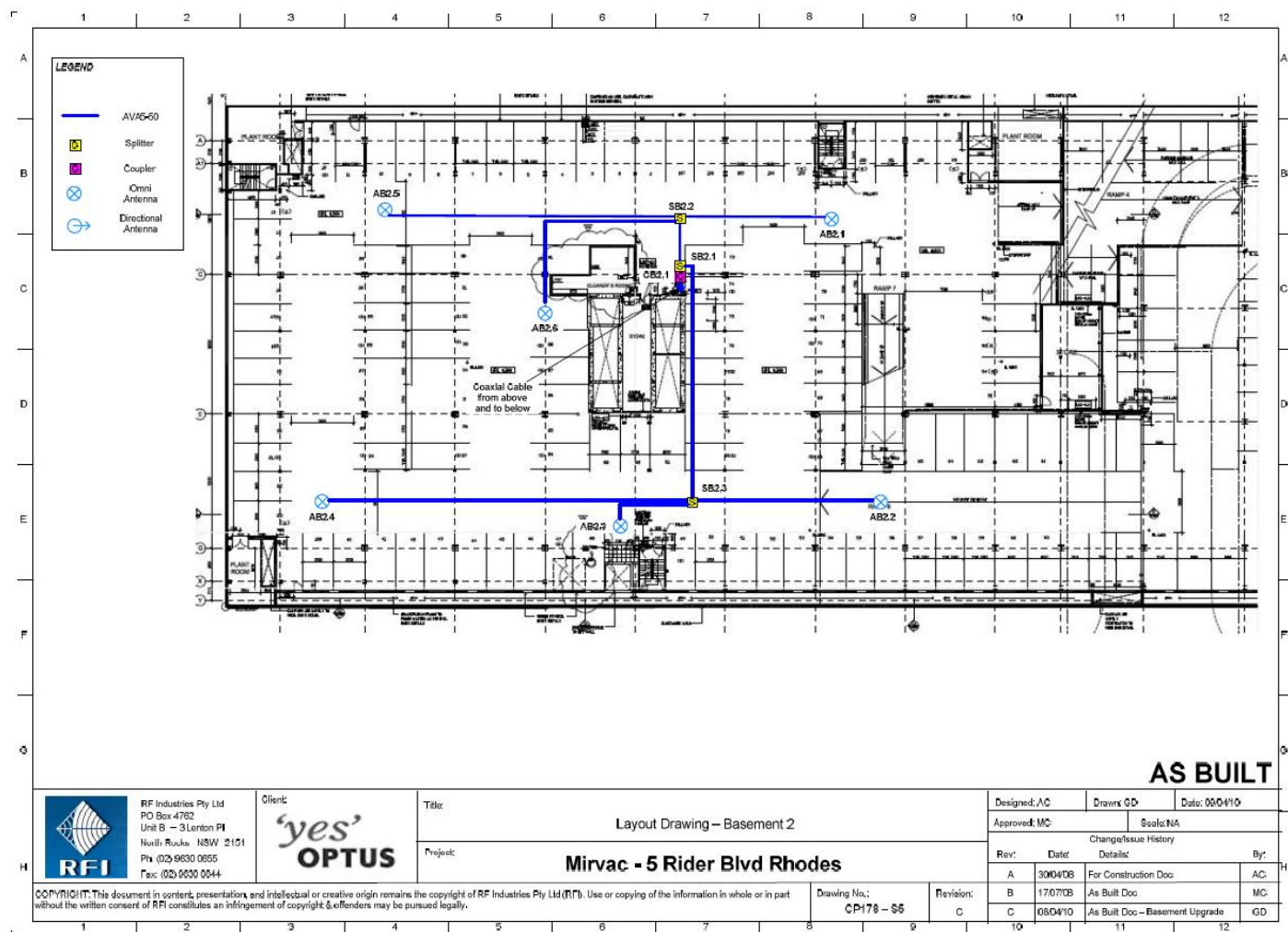
Optus antenna layouts



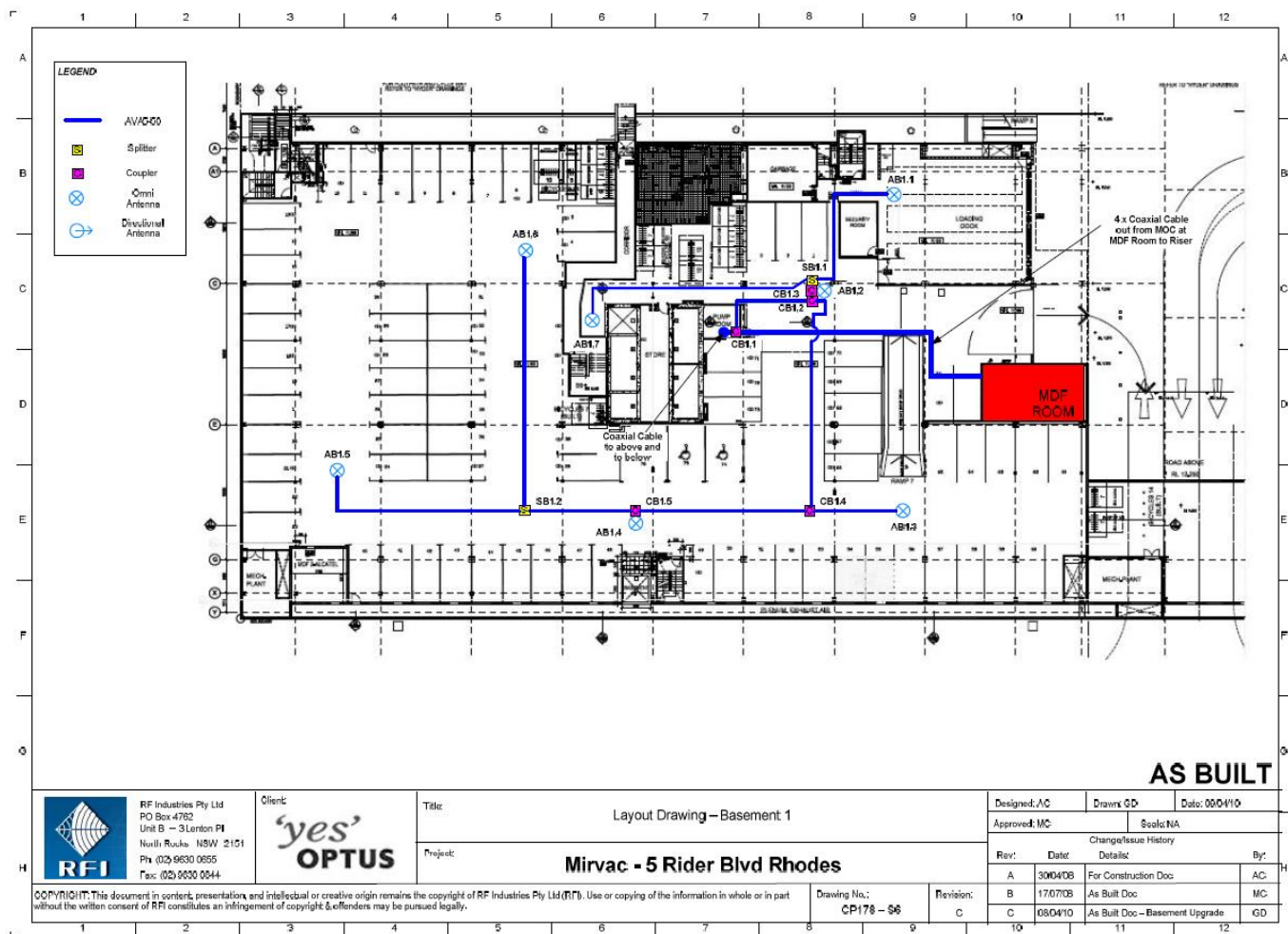
This Document is Uncontrolled when printed. See www.rfnsa.com.au for the current issue



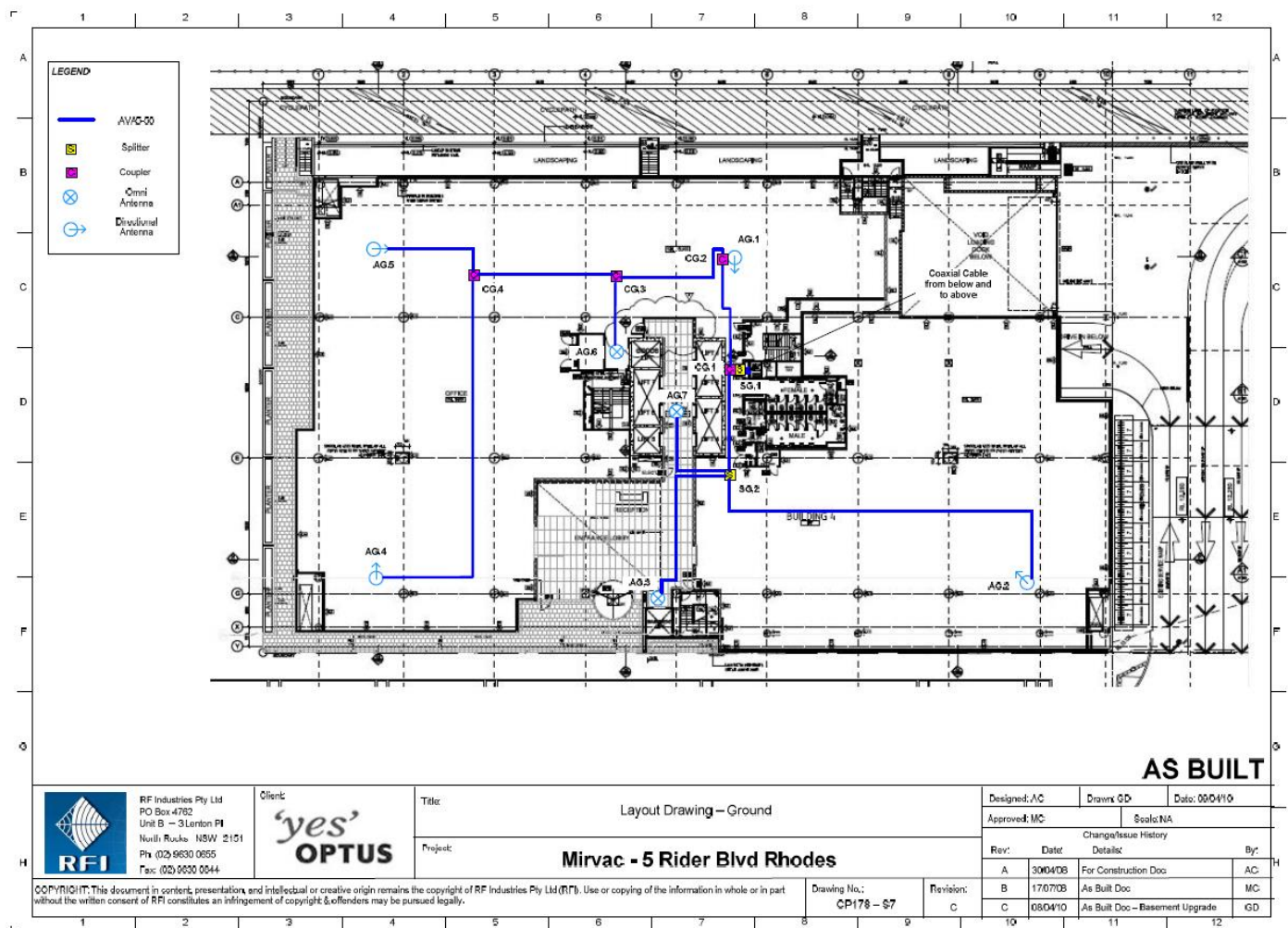
This Document is Uncontrolled when printed. See www.rfnsa.com.au for the current issue



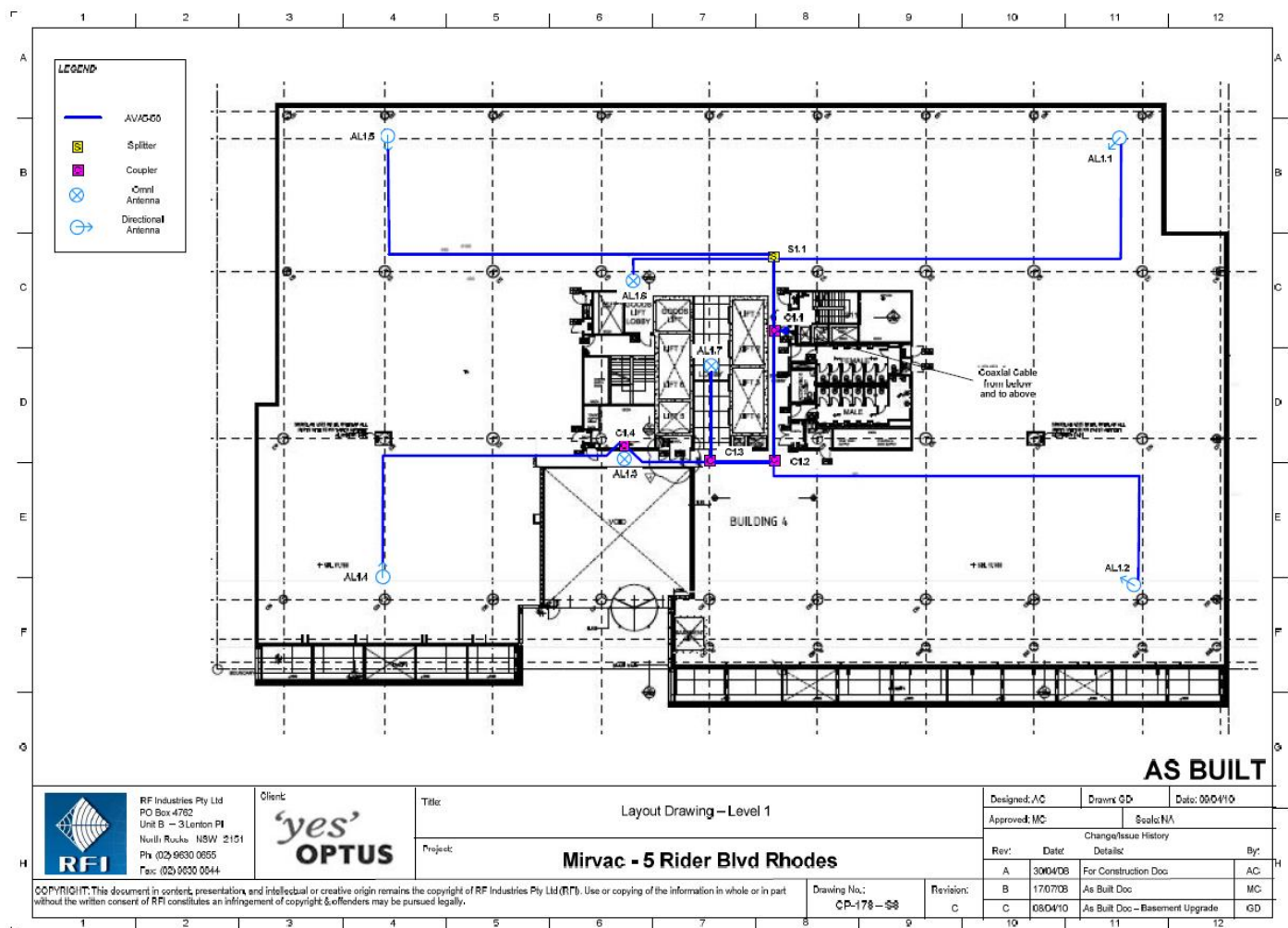
This Document is Uncontrolled when printed. See www.rfnsa.com.au for the current issue



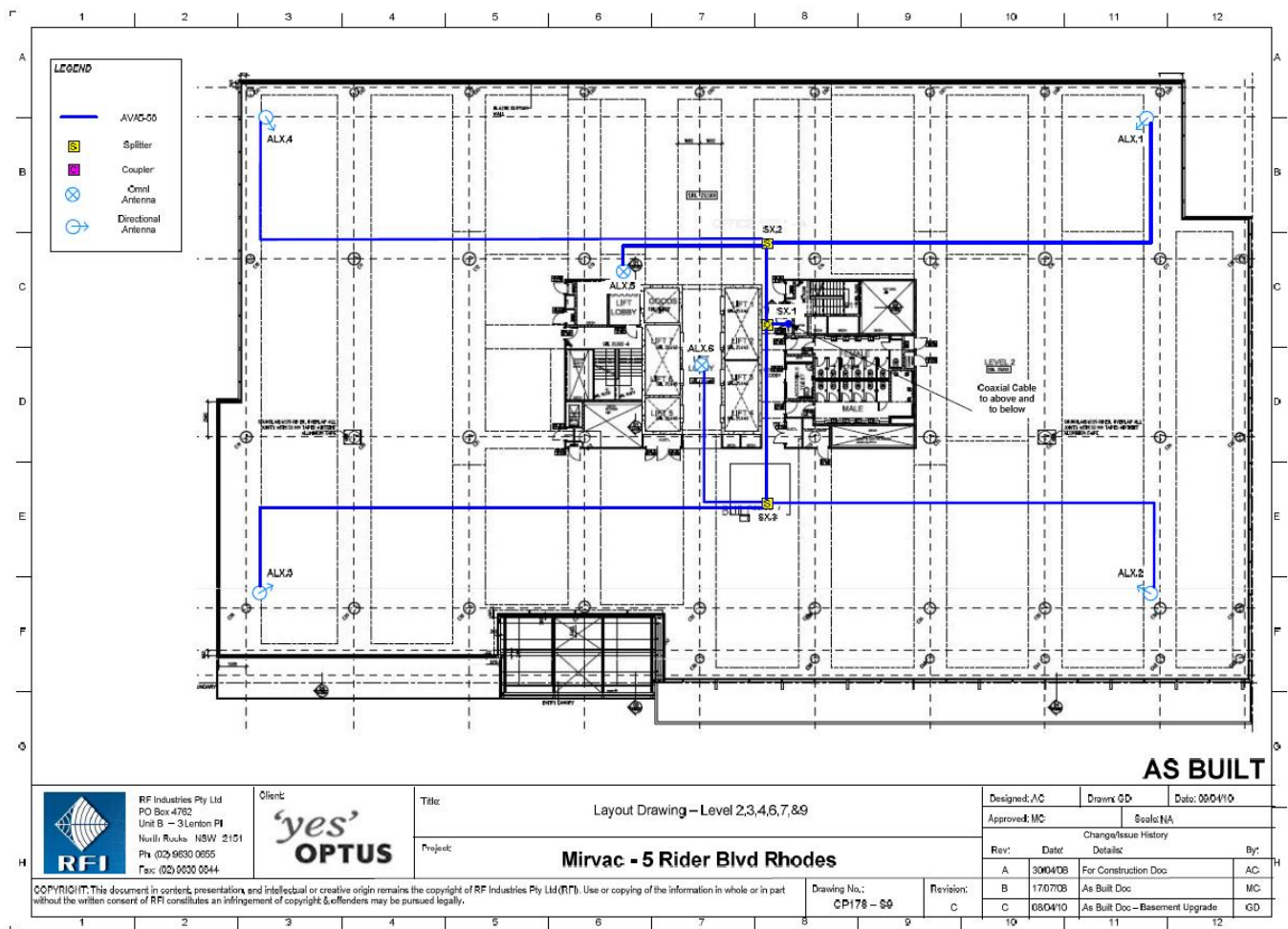
This Document is Uncontrolled when printed. See www.rfnsa.com.au for the current issue



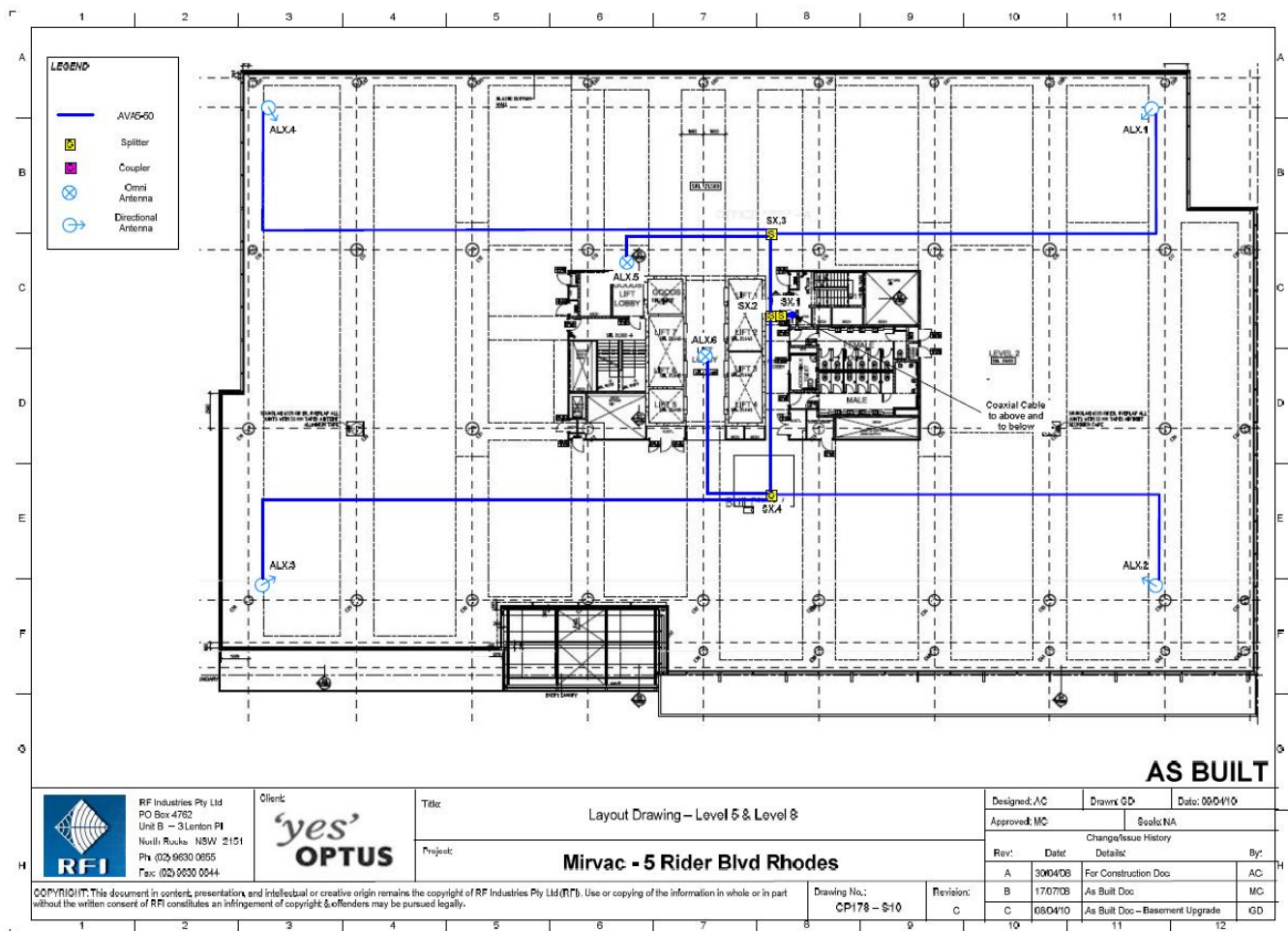
This Document is Uncontrolled when printed. See www.rfnsa.com.au for the current issue



This Document is Uncontrolled when printed. See www.rfnsa.com.au for the current issue

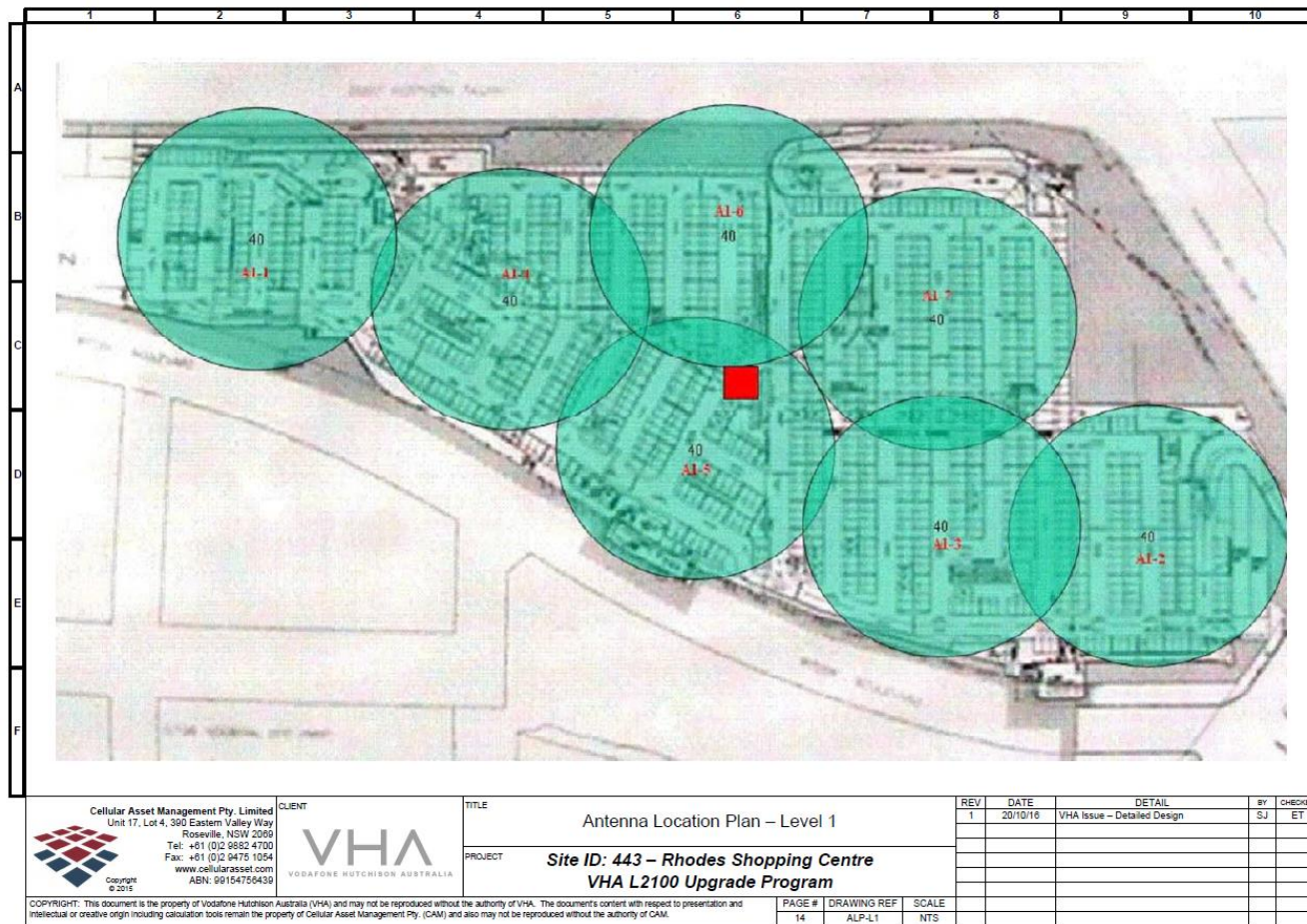


This Document is Uncontrolled when printed. See www.rfnsa.com.au for the current issue

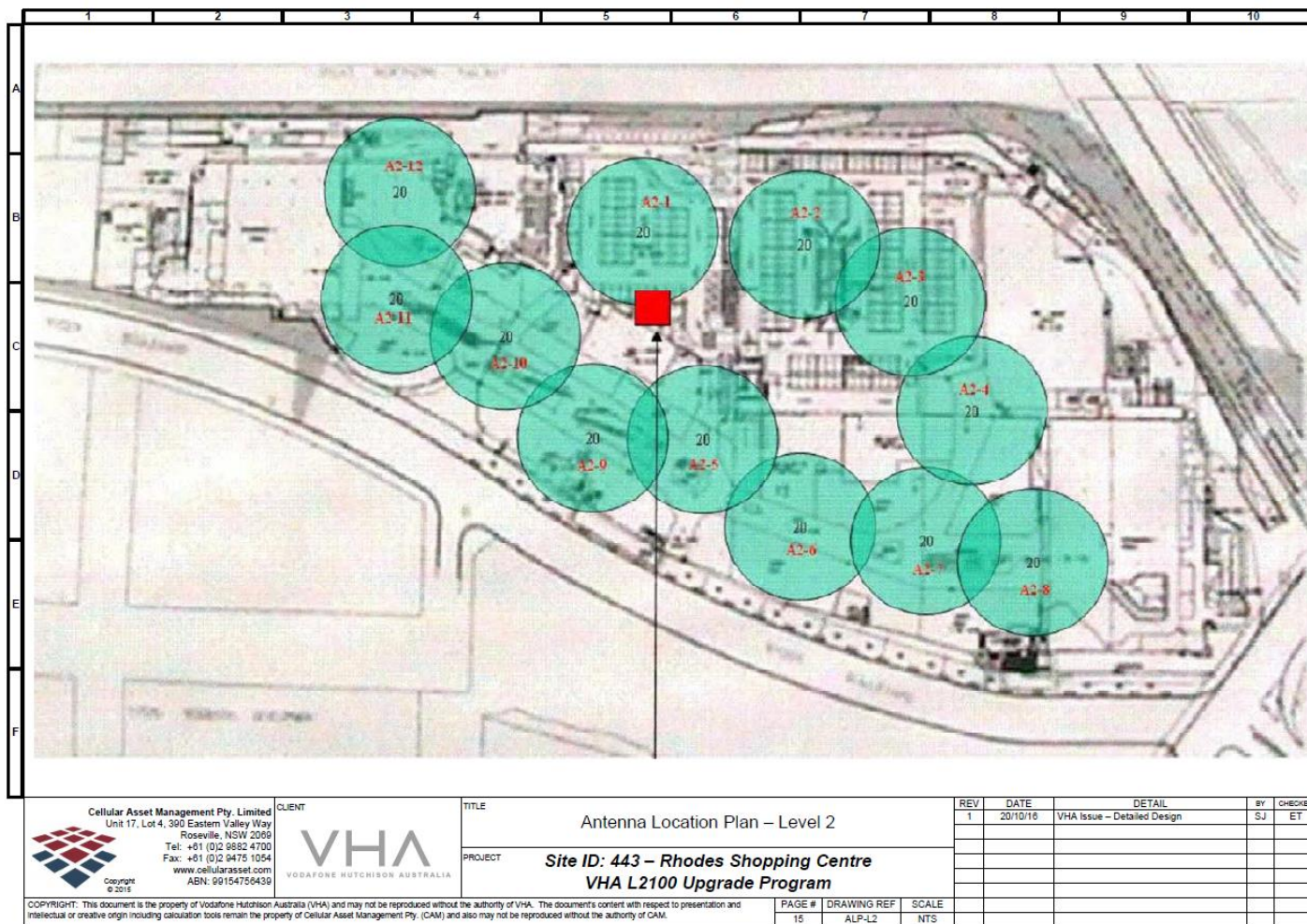


This Document is Uncontrolled when printed. See www.rfnsa.com.au for the current issue

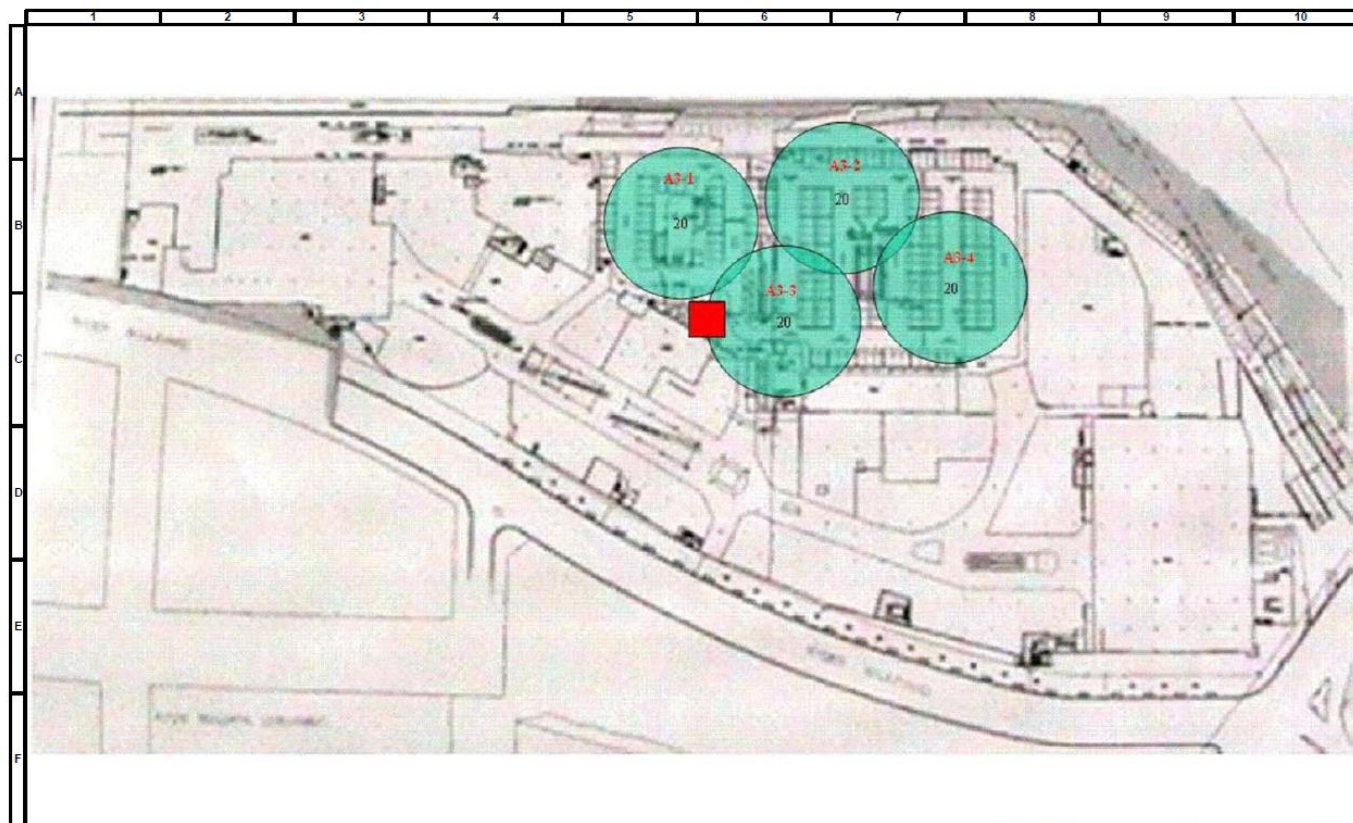
Vodafone antenna layouts





This Document is Uncontrolled when printed. See www.rfnsa.com.au for the current issue

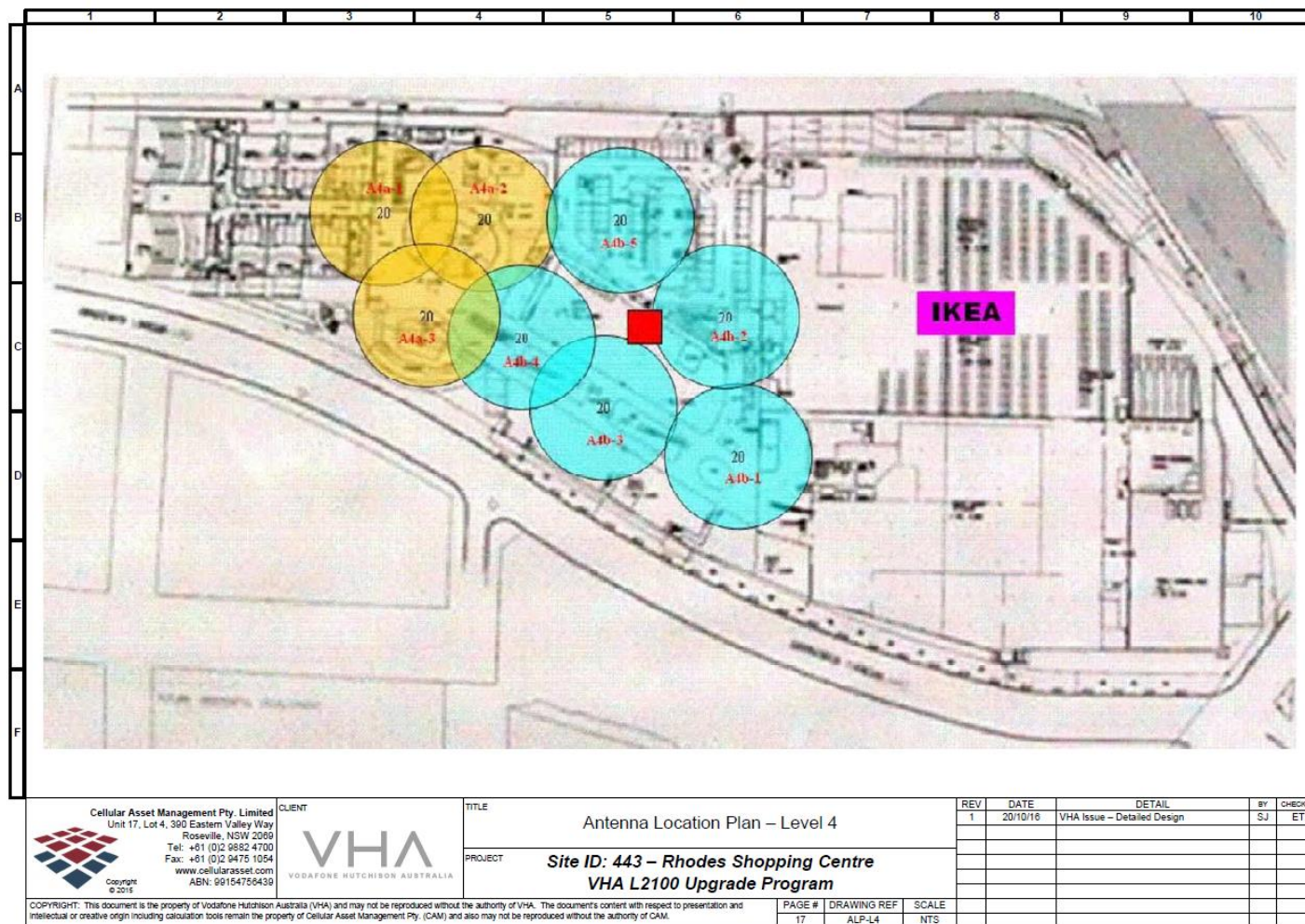


This Document is Uncontrolled when printed. See www.rfnsa.com.au for the current issue

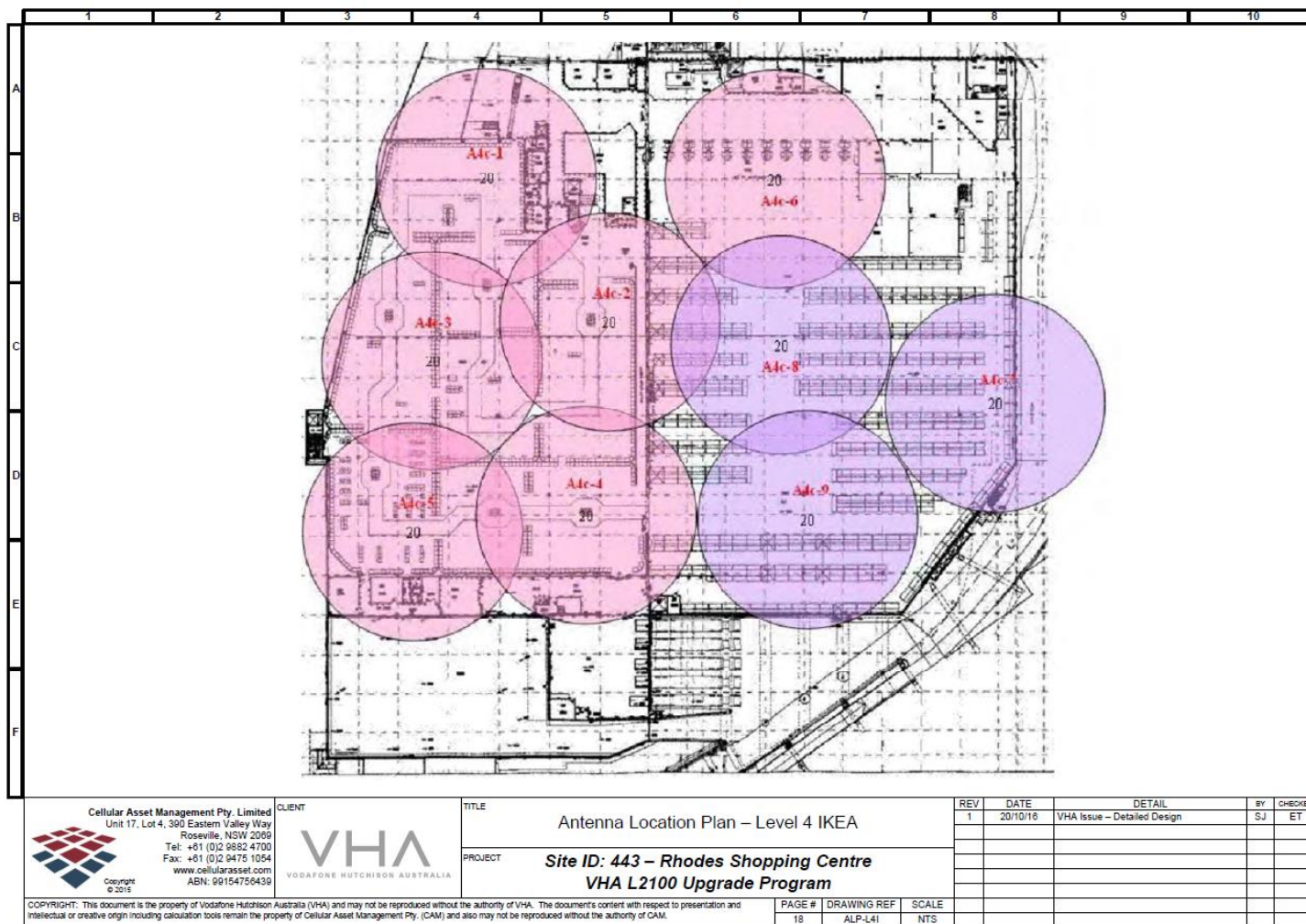


 <p>Cellular Asset Management Pty. Limited Unit 17, Lot 4, 300 Eastern Valley Way Roseville, NSW 2059 Tel: +61 (0)2 9882 4700 Fax: +61 (0)2 9475 1054 www.cellularasset.com ABN: 90154750439</p> <p>Copyright © 2015</p>	<p>CLIENT</p>  <p>VHA VODAFONE HUTCHISON AUSTRALIA</p>	<p>TITLE</p> <p>Antenna Location Plan – Level 3</p>	REV	DATE	DETAIL	BY	CHECKED			
		<p>PROJECT</p> <p>Site ID: 443 – Rhodes Shopping Centre VHA L2100 Upgrade Program</p>	1	20/10/16	VHA Issue – Detailed Design	SJ	ET			
			<p>COPYRIGHT: This document is the property of Vodafone Hutchison Australia (VHA) and may not be reproduced without the authority of VHA. The document's content with respect to presentation and intellectual or creative origin including calculation tools remain the property of Cellular Asset Management Pty. (CAM) and also may not be reproduced without the authority of CAM.</p>					PAGE #	DRAWING REF	SCALE
								16	ALP-L3	NTS

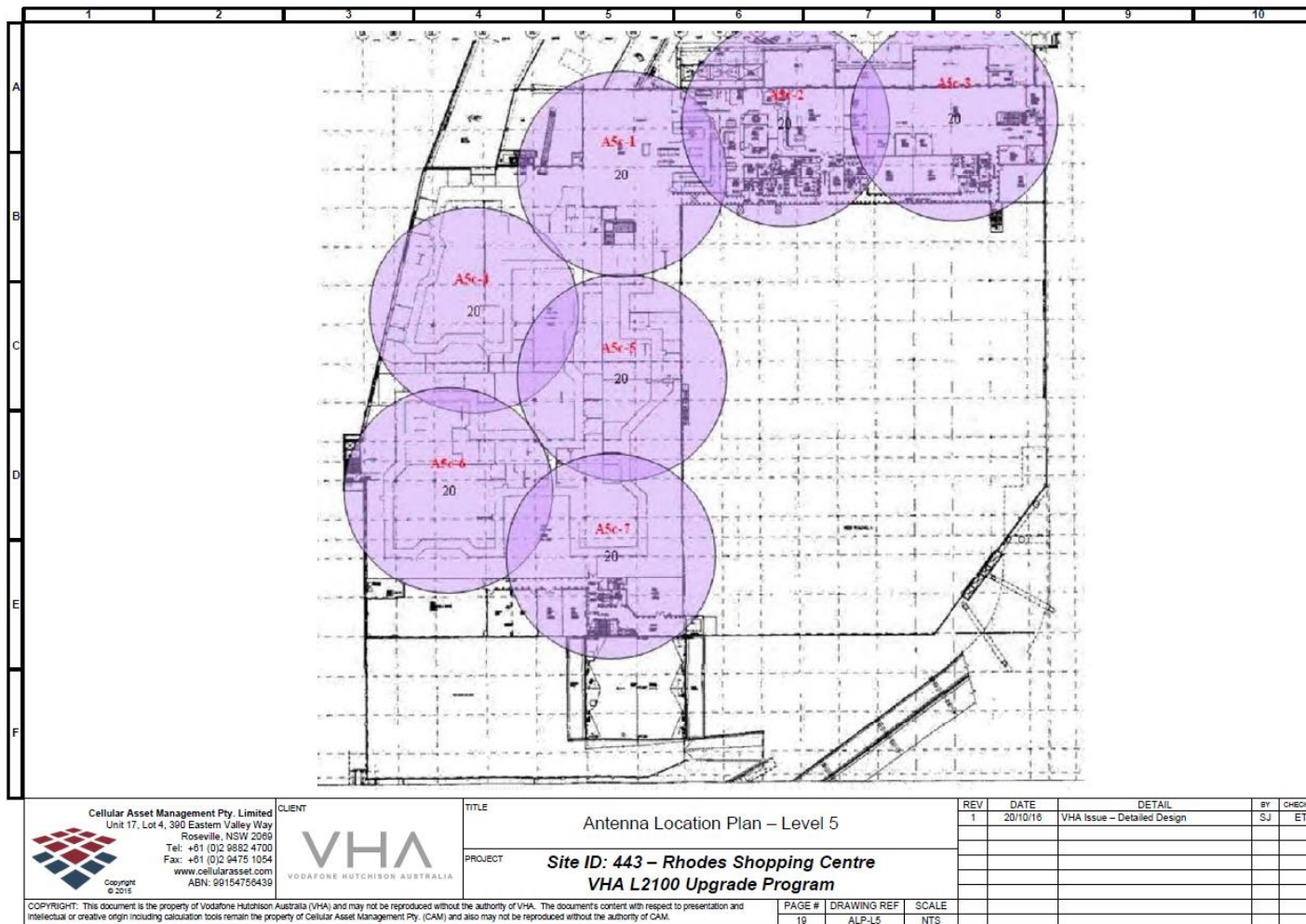
This Document is Uncontrolled when printed. See www.rfnsa.com.au for the current issue



This Document is Uncontrolled when printed. See www.rfnsa.com.au for the current issue



This Document is Uncontrolled when printed. See www.rfnsa.com.au for the current issue



This Document is Uncontrolled when printed. See www.rfnsa.com.au for the current issue