

EME Guide



for Site Safety

RFNSA No: 4300024

Document Issue No: 02

Document Issue Date: 12/04/2018

**1 Main Street
SPRINGFIELD LAKES
QLD, 4300**



An Important Message to people accessing this building or structure

There are radio communications antennas operating on this building or structure. The antennas on this building or structure produce a form of energy known as electromagnetic energy (EME).

You should not access Exclusion Zones, which are areas close to the antennas

This EME guide is endorsed by AMTA and the MCF as a standard for EME Site Safety Documentation.

DO NOT STAND IN FRONT OF ANTENNAS

DO NOT ACCESS RED AND YELLOW EXCLUSION ZONES

This document will show Exclusion Zones around the antennas, don't enter these areas. The latest version of this EME Guide is accessible at www.rfnsa.com.au or from the facility owner, the mobile carrier, or radio service operator or building owners occupying the site

Exclusion zones are defined by the Australian EME Standard "ARPANSA Radiation Protection Standard - Maximum Exposure Levels to Radiofrequency Fields (RPS3)."

Make sure you view all the Exclusion Zone drawings so you get a complete understanding of the site.



Red Zone = Exclusion Zone. No access without confirmed transmitter power reduction or transmitter shutdown



Yellow Zone = Exclusion Zone. Limited access to specially trained personnel (RF Workers).



White Zone = General access

Note: This document replaces the Radio Communications Site Management Book (RCSMB).

This Document is Uncontrolled when printed. See www.rfnsa.com.au for the current issue

1. Be aware of these Access Controls on site

If you need to access this site contact the site owner, manager or the Carriers and Radio Service Operators occupying the site.

Access Control Procedures at Site

For Access to this site contact the site owner, manager or the Carriers and Radio Service Operators occupying the site. Please also refer to the EME Safe Work Procedures Page for this site at www.rfnsa.com.au

The rooftop is restricted access only and can only be arranged via the building management.

RF warning sticker mounted on the dish.

2. EME Safe Work Procedures to be followed at this site

1. Be appropriately trained
2. Receive a safety briefing from the Site Manager
3. Do not stand in front of antennas
4. Observe safety signs
5. Ensure you have read the current version of this EME Guide (www.rfnsa.com.au)
6. Check site drawings & antenna exclusion zones
7. Check for site updates - see caution sheets
8. Use a safe work method statement
9. Use a personal RF monitor
10. Questions - ask for help

This Document is Uncontrolled when printed. See www.rfnsa.com.au for the current issue

3. Carriers and Radio Service Operators

Carrier/RSO	Antennas	Contact No.
VODAFONE	1	Network Management Centre 1800 683 683 [24hrs]

4. Site Owner And Manager Contact Details

Name	Role	Company	Contact Details
Darryl Marsh	Site Manager	MIRVAC	(07) 3470 3205 / 0412 506 461 Darryl.marsh@mirvac.com
MIRVAC	Site Owner	MIRVAC	(02) 9923 0702

Please Note: The site owner or manager contact information is current at the Issue Date but may change without notice to the Mobile Carriers or Radio Service Operators occupying the site.

Important Information About This EME Guide

Site safety information including exclusion zone diagrams in this EME Guide have an “Issue date” incorporated on each page and are correct for that date.

To ensure that you have the most current site safety information available, check the on-line version of this EME Guide using the RFNSA number reference found on the front cover.

On-line Site Information

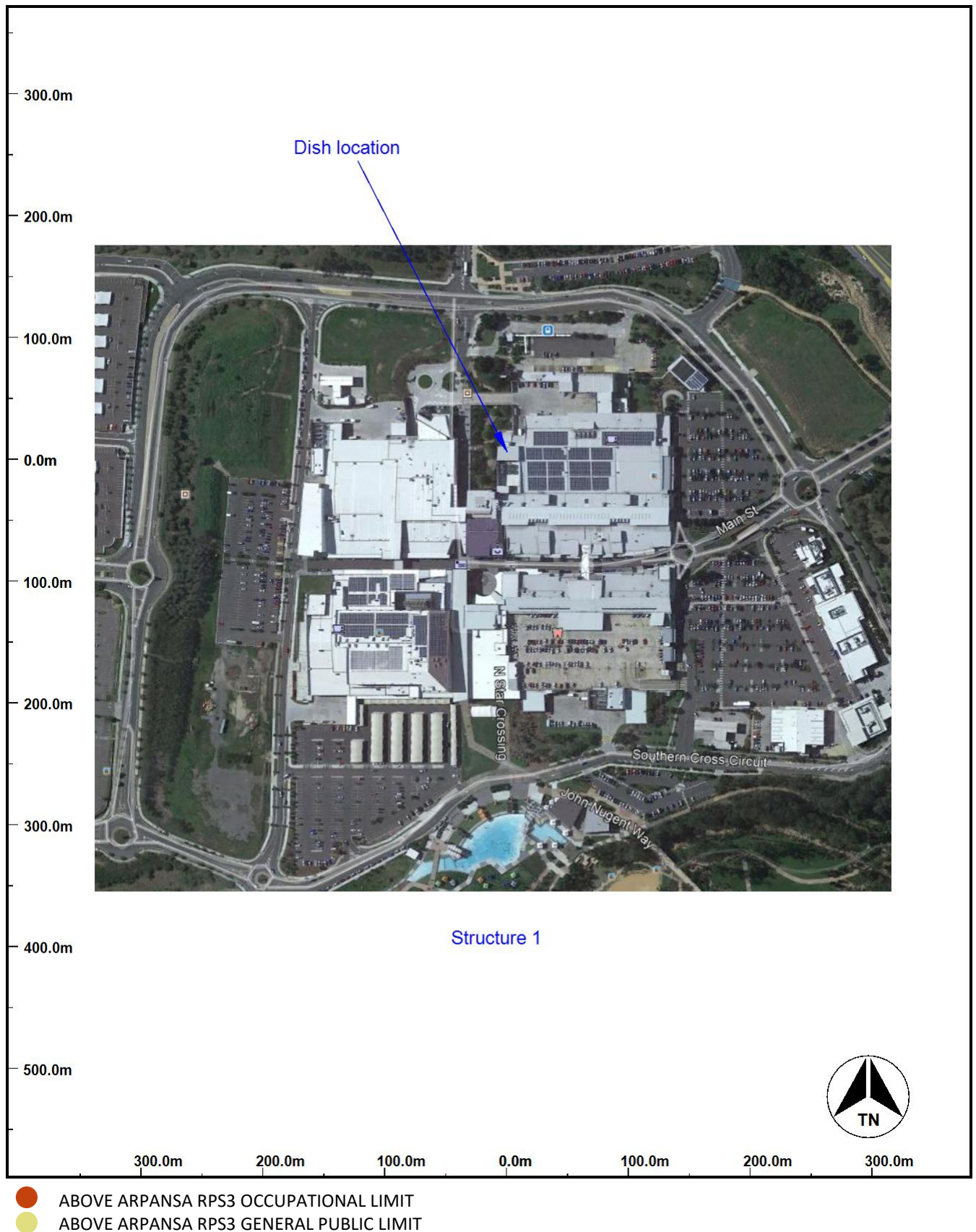
MCF National Site Archive www.rfnsa.com.au

Mobile Site Safety www.mobilesitesafety.com

This Document is Uncontrolled when printed. See www.rfnsa.com.au for the current issue

Section 1: Site Exclusion Zones

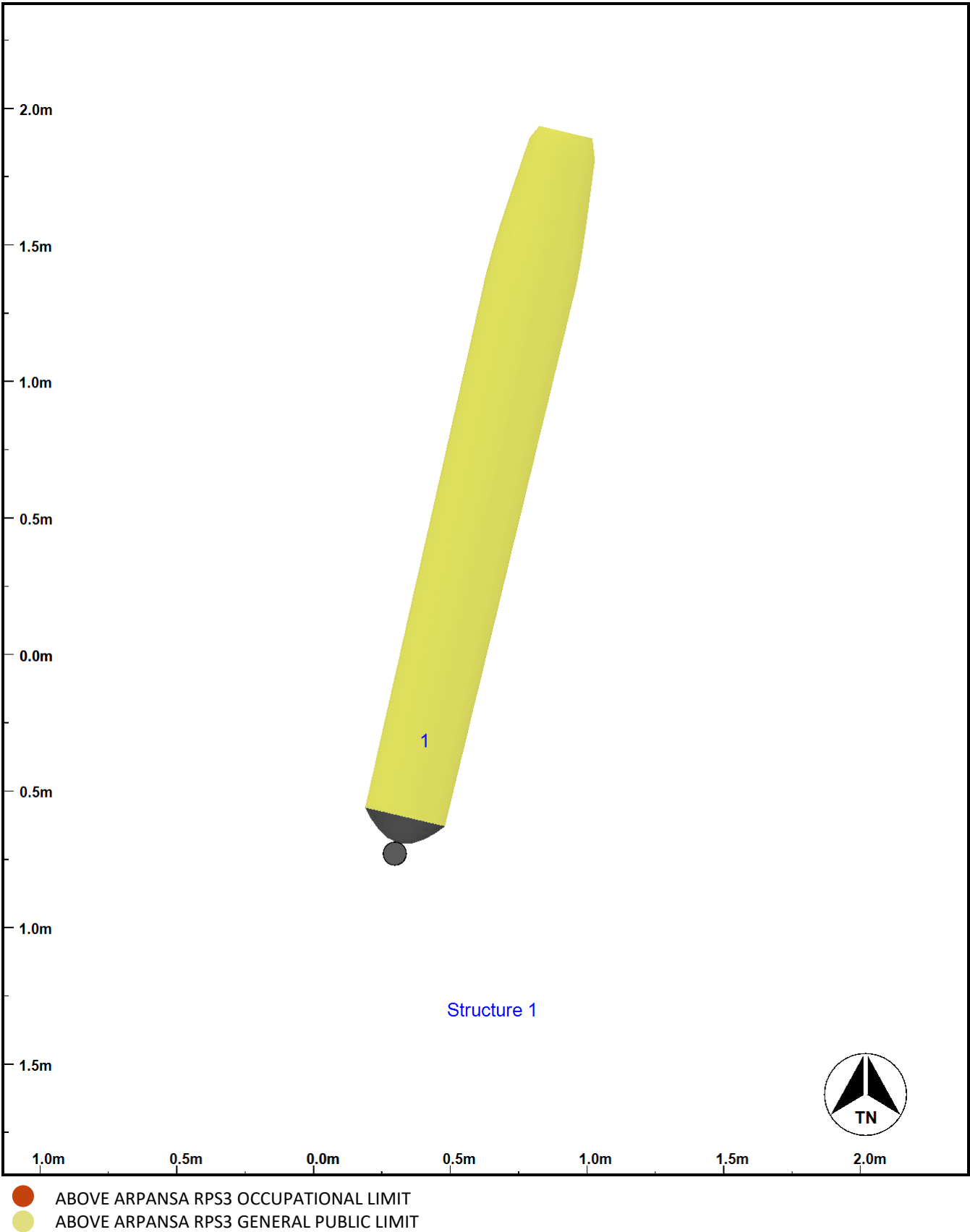
Pictorial View



This Document is Uncontrolled when printed. See www.rfnsa.com.au for the current issue

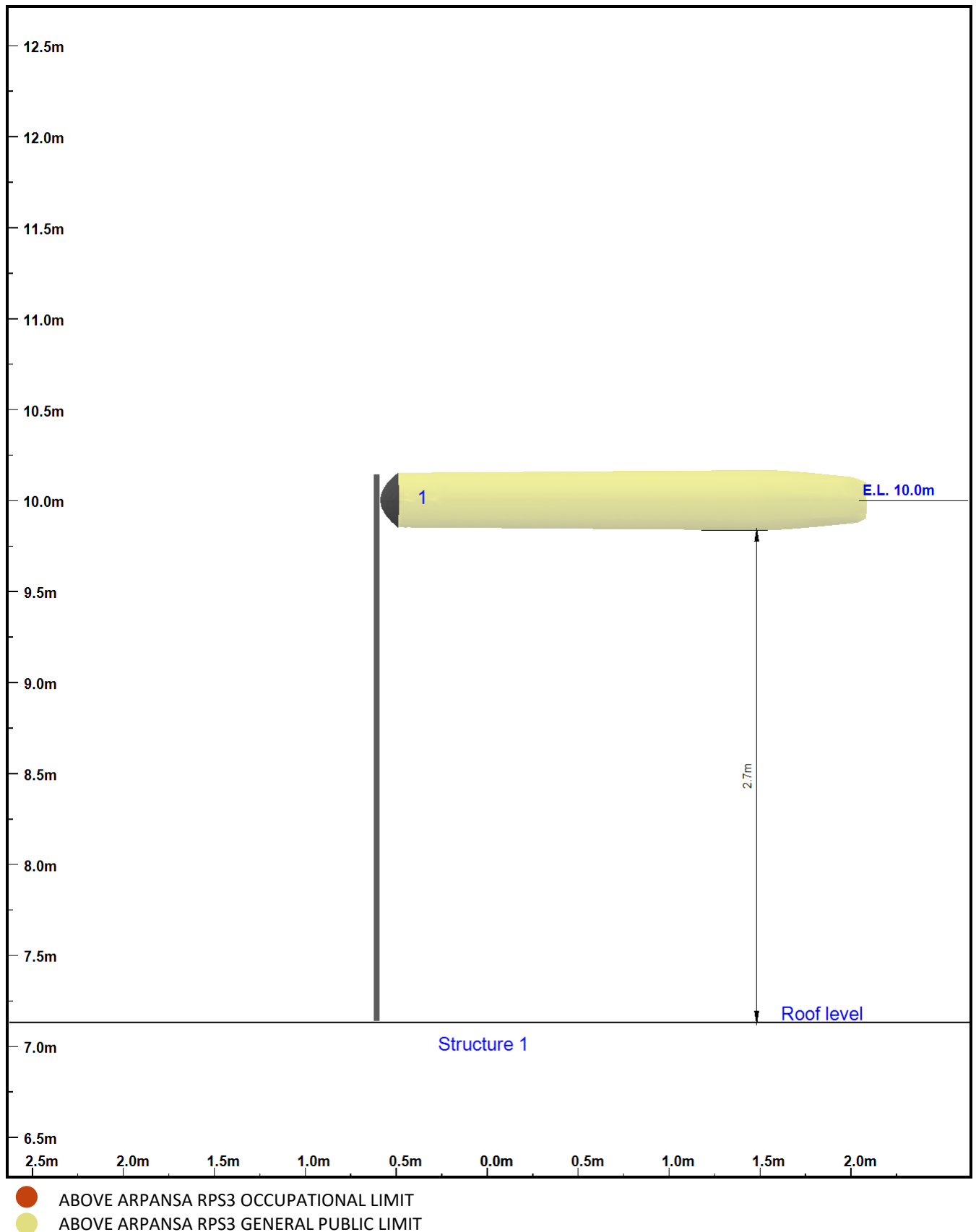
Section 2: Detailed Site Exclusion Zone Drawings

Site Layout



This Document is Uncontrolled when printed. See www.rfnsa.com.au for the current issue

View from East



This Document is Uncontrolled when printed. See www.rfnsa.com.au for the current issue

Section 3: Equipment Installed at this Site

Equipment List

Diagram Ref	Owner Ref	Owner	Type/Make/Model	Height (m)	Bearing (°TN)	Mech. Tilt (°)	Elec. Tilt (°)	Pol.	System/Function/Sector	Power (W)
1	VA	VODAFONE	RFS SBX1-220C DISH	10	13.2	0	0	Dual H&V	LINK	0.2
									LINK	0

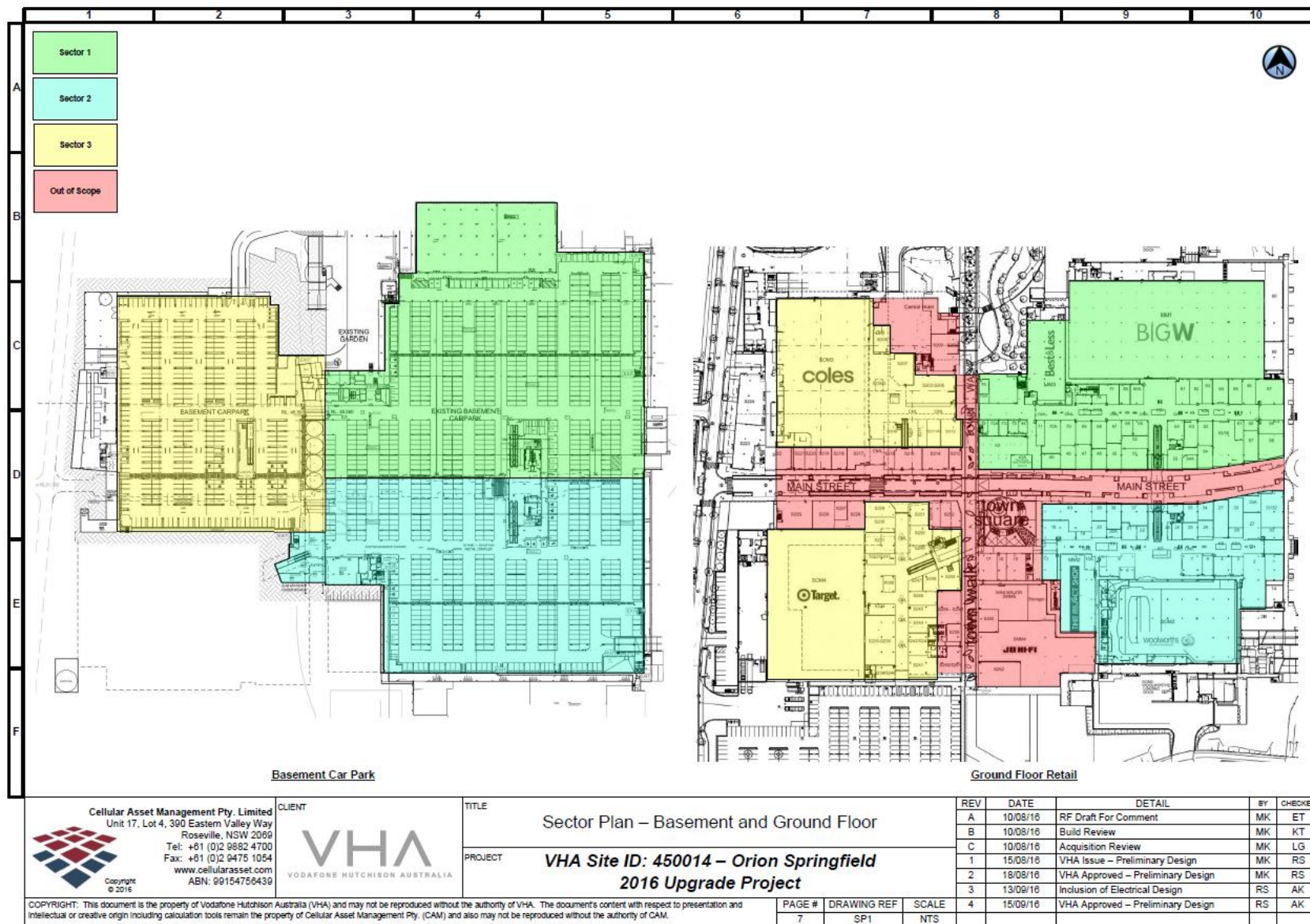
The accuracy of results derived from information provided by the client or sourced from aerial imagery or similar cannot be guaranteed. Corearth does not accept any liability for decisions made or actions taken based on these results.

This Document is Uncontrolled when printed. See www.rfnsa.com.au for the current issue

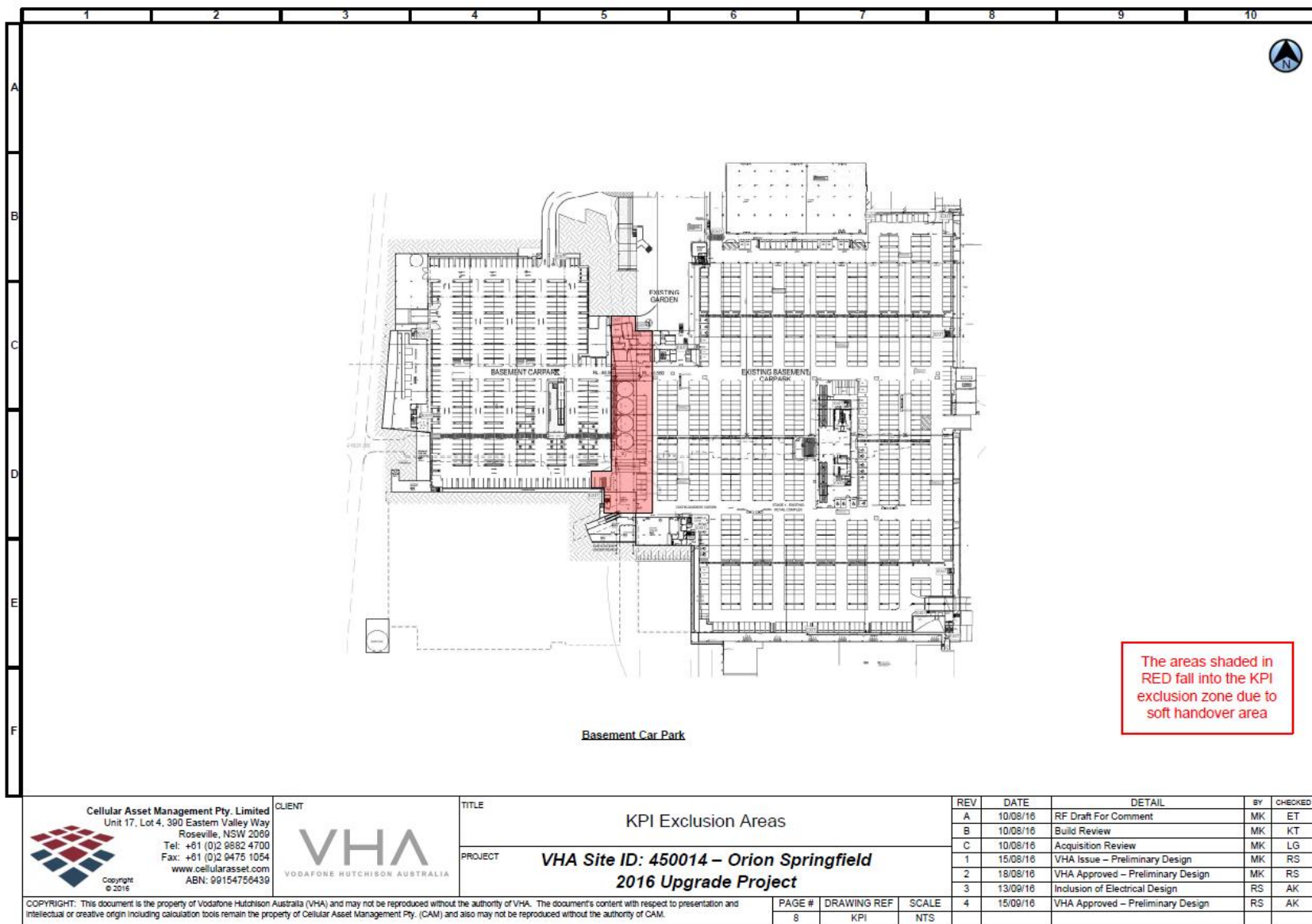
Section 4: Site Specific Documents



This Document is Uncontrolled when printed. See www.rfnsa.com.au for the current issue



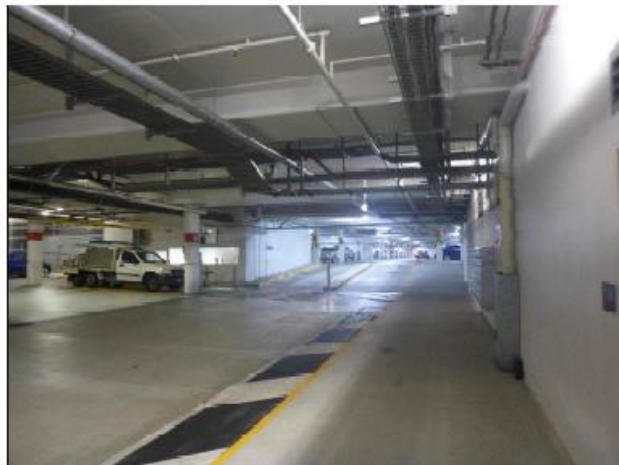
This Document is Uncontrolled when printed. See www.rfnsa.com.au for the current issue



This Document is Uncontrolled when printed. See www.rfnsa.com.au for the current issue



View from corner Main road & Pedestrian mall which separates the shopping centre into 4 separate buildings



All levels are connected underground via basement Car Park. View from MDF room into recently redeveloped area.



MDF Room signage



DB adjacent door

This Document is Uncontrolled when printed. See www.rfnsa.com.au for the current issue