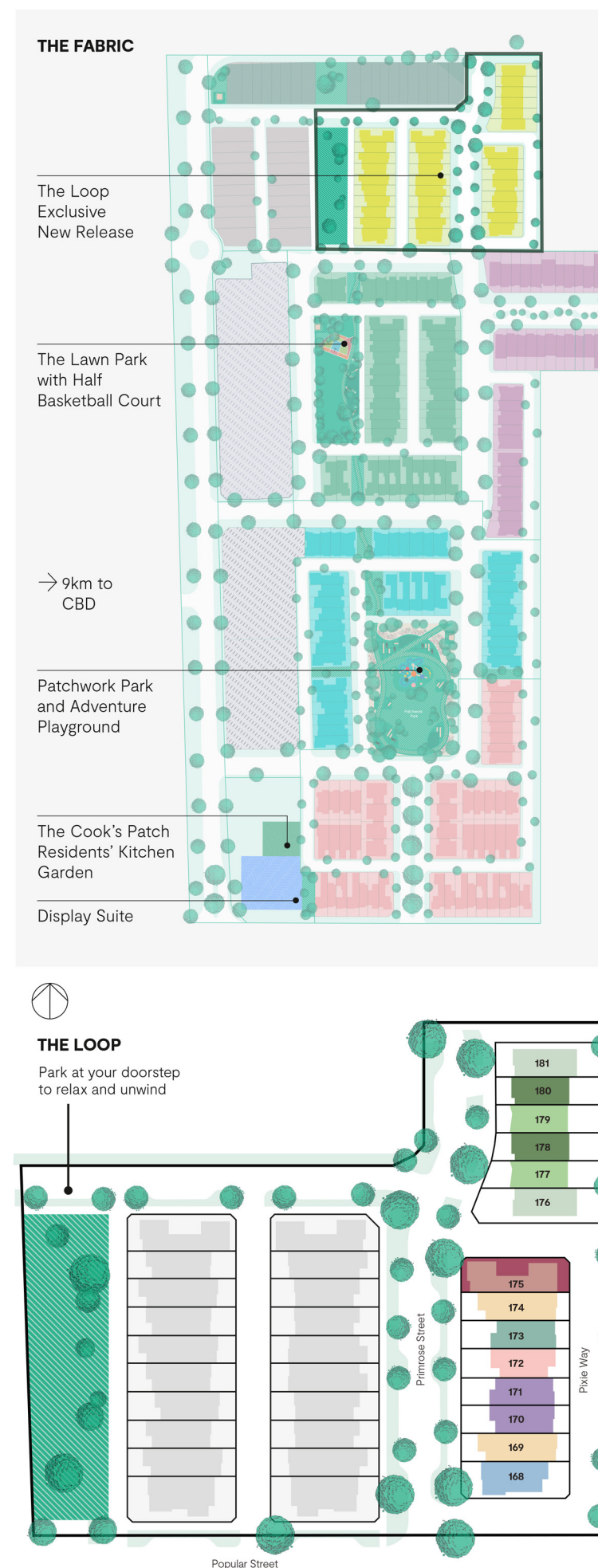


theFabric

The Motif V





LIVE LIKE A LOCAL AT THE LOOP

Welcome to The Fabric by Mirvac – a thriving and tight-knit community in Altona North, the hidden gem of Melbourne's vibrant inner west.

The Fabric has been thoughtfully designed to be a welcoming, walkable community of crafted contemporary townhomes and sustainable design initiatives, with landscaped social, recreational and relaxation spaces to enrich your lifestyle.

The Loop is the exclusive new release at our exciting established community where everything you need is within easy reach, from the city to bayside beaches.




MEET THE MOTIF V

The Motif is the largest townhome at The Loop, with four bedrooms (plus an optional study nook) and expansive living areas including a delightful internal courtyard which is accessed through sliding doors off the kitchen.

The master retreat is situated upstairs at the front, clearly separated from the other bedrooms by a spacious family area.

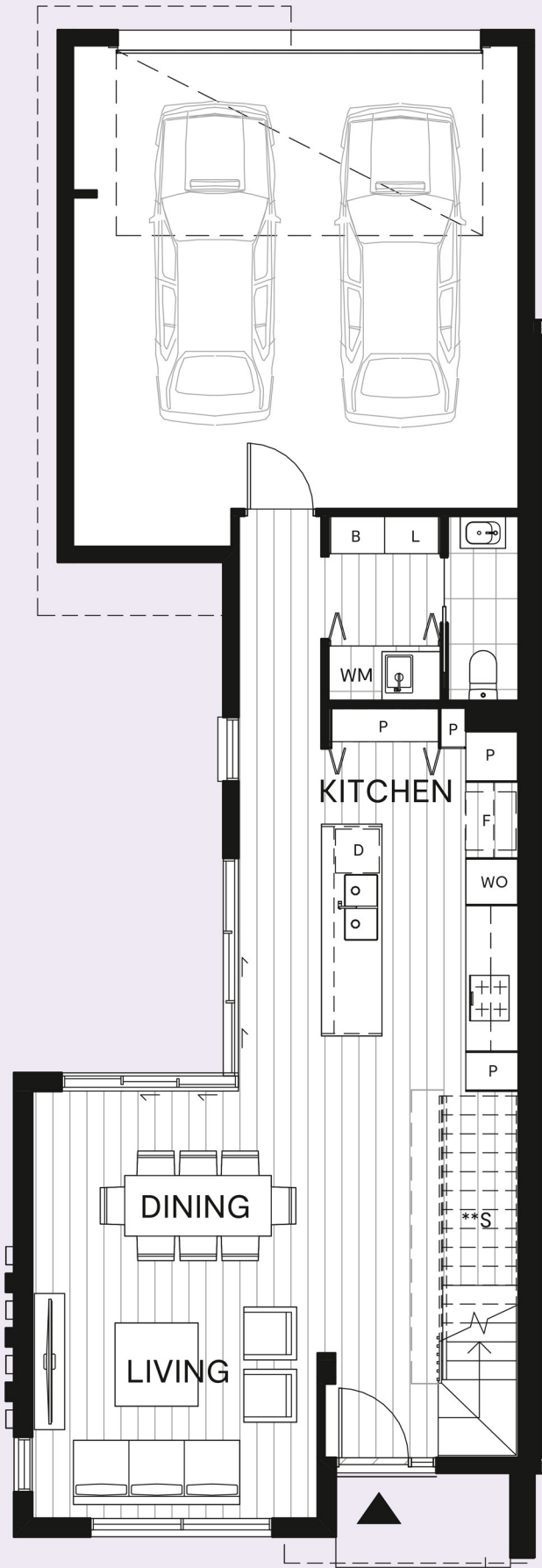
THE MOTIF V FLOORPLAN

Lot 175 | Primrose Street

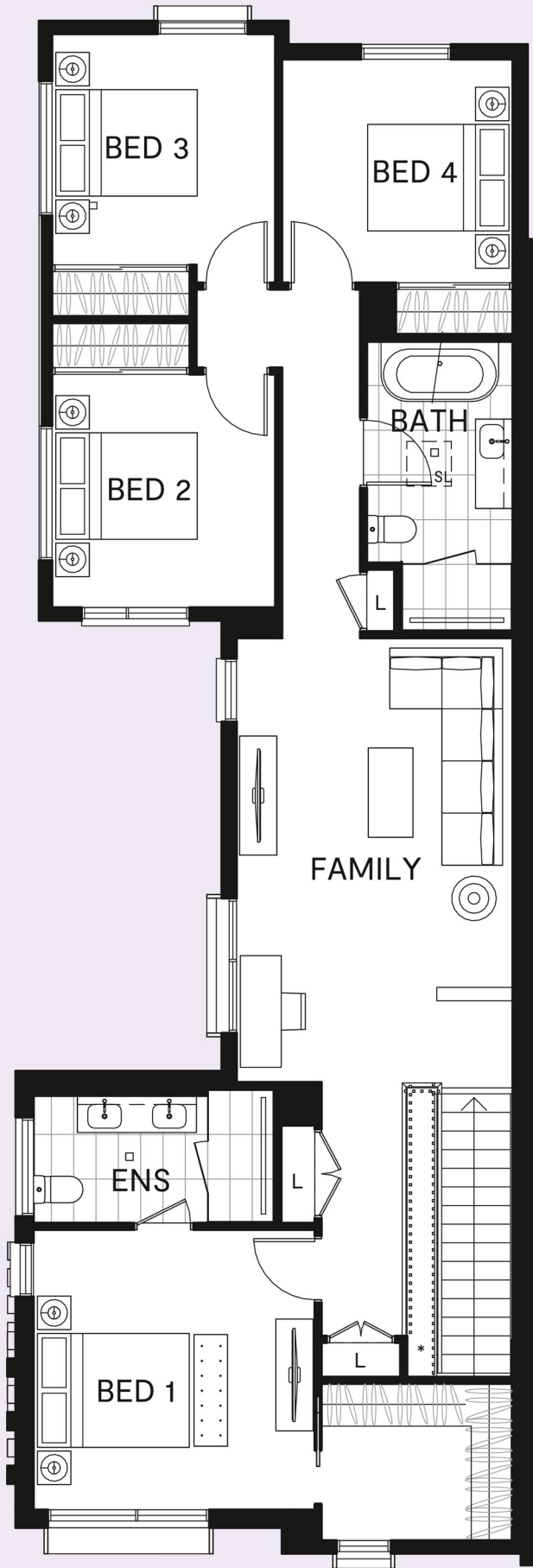
4		2.5		2	
Ground Floor		70m ²			
First Floor		113m ²			
Garage		42m ²			
Total Area		225m ²			

* Void	WO Wall Oven
** Non-Trafficable Roof	BLY Balcony
**S Low Head Height Storage	F Fridge Space
B Broom	MW Microwave Space
D Dishwasher	S Store
L Linen	SV Service Cupboard
P Pantry	WM Laundry App Space
SL Skylight	

GROUND FLOOR

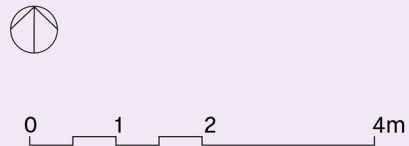


FIRST FLOOR



HIGHLIGHTS

- Large corner 4 bedroom family home with a double garage
- Kitchen with island bench overlooks an internal landscaped courtyard which is accessed through large sliding doors off the living area
- Optional study nook under stairs
- Void to stairs to carry light up the stairwell
- Laundry and linen cupboards tucked away with a powder room behind the kitchen
- Generous master bedroom with walk in robe and double vanity ensuite
- 3 other bedrooms upstairs with luxurious family bathroom and bathtub
- Generous family room overlooking downstairs courtyard
- Beautiful finishes and fittings with a selection of colour palettes
- Solar panels as standard so you can enjoy full electric 7-star natHERS living



thefabric.mirvac.com

Disclaimer: This floor plan was produced prior to construction and while the information contained herein is believed to be correct it is not guaranteed. Changes will undoubtedly be made in accordance with the contract for sale. The plan does not show additional features such as hot water system, services or bulkheads necessary for services. Dimensions, areas and scale of floor plans are approximate only. Areas subject to change in accordance with the provisions of the contract. Area includes balcony and/or terrace where applicable. It excludes associated parking and external storage areas. Areas calculated in accordance with the Property Council of Australia Method of Measurement. The furniture and furnishings depicted are not included with any sale. Purchasers must refer to the contract for sale for the list of inclusions. Furnishings should not be taken to indicate the final position of power points, TV connection points and the like. Bed sizes shown are indicative only and not guaranteed. All graphics, including design and extent of tile/paver/carpet areas, landscaping, balustrades, sun shading devices, fencing, privacy screens and services equipment are for illustrative purposes only and are not to be relied on as a representative of the final product. 30 July 2025.

