

'MURPHY HOUSE'

4 Murphy Court, Everton Park Qld 4053



Total Area: **353sqm****

Internal Area: **247sqm****

External Area: **106sqm****

Land Area: **805sqm**



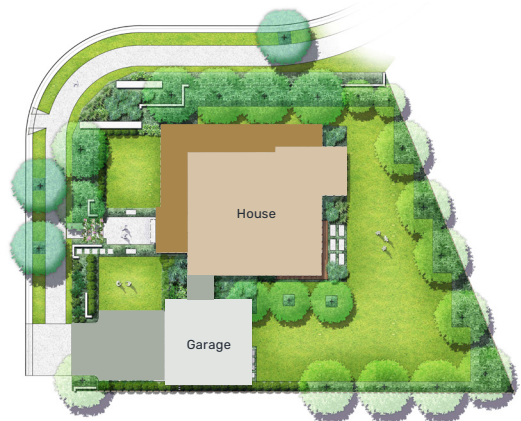
Scan to view
online listing



Ground Floor



Upper Level



For more information, please call Mirvac Sales Consultant Kathleen Holland M: 0422 531 221
E: kathleen.holland@mirvac.com ashford.mirvac.com

IMPORTANT DISCLAIMER. PLEASE READ CAREFULLY: *Price current as of 25/07/2023 and subject to change. **Dimensions, design features, floor areas, specifications and room configurations subject to change without notice. The plan does not show additional features such as hot water systems, services or bulkheads necessary for services. Any furniture shown is not included. Furnishings should not be taken to indicate the final position of power points, TV connection points and the like. All graphics, including design and extent of tile/paver/ carpet areas, landscaping, balustrades and services equipment are for illustrative purposes only and are not to be relied on as a representative of the final product. Buyers should refer to and rely on the Identification Plan included in the Disclosure Documents. Subject to Variations in accordance with Contract Terms. Purchasers must refer to the contract for sale for the list of inclusions. All information contained within the contract of sale takes precedence over this document. Mirvac reserves the right to change inclusions without notice. Mirvac QLD Pty Ltd - ACN 060 411 207. Version 1. 21/08/2023

