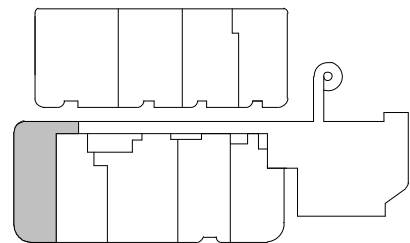


LEVEL 2

Lot No
30205

LOCATION PLAN
CHARLTON HOUSE

ONE BEDROOM
APARTMENT



Internal Area 69 m²
Balcony Area 29 m²
Total Area 98 m²

Areas subject to change in accordance with the provisions of the contract. Area includes balcony and/or terrace where applicable. It excludes associated parking and external storage areas.

Legend - As Applicable			
	Access	* Fixed Screen	F Fridge
	Balcony Access	** Sliding Screen	P Pantry
	Planting maintained by Body Corporate	K King Bed	O Wall Oven
		Q Queen Bed	EC Electrical / Communications
			J Joinery
			L Linen
			St Storage
#1	Lighting upgrade available	#4	Lighting upgrade available

Provision of a water point & power point has been made available to balcony.

Important Note: This floor plan was produced prior to construction and while the information contained herein is believed to be correct it is not guaranteed. Changes may be made in accordance with the contract for sale. The plan does not show additional features such as hot water systems, services or Bulkheads necessary for services. Dimensions, areas and scale of floor plans are approximate only and subject to the terms of the Contract. The furniture and furnishings depicted are not included with any sale. Purchasers must refer to the contract for sale for the list of inclusions. Purchaser options may or may not be noted on floor plans and are available at purchaser cost only at time of sale. Furnishings should not be taken to indicate the final position of power points, TV connection points and the like. All graphics, including design and extent of tile/paver/carpet areas, landscaping, balustrades, louvres, sun shading devices, fencing, screens and services equipment are for illustrative purposes only and are not to be relied on as a representative of the final product. Plans do not show additional features within each lot such as letterboxes and side and rear retaining walls. All level changes in the courtyards may not have been shown.

04/02/2022 [A]


CHARLTON HOUSE
AT ASCOT GREEN