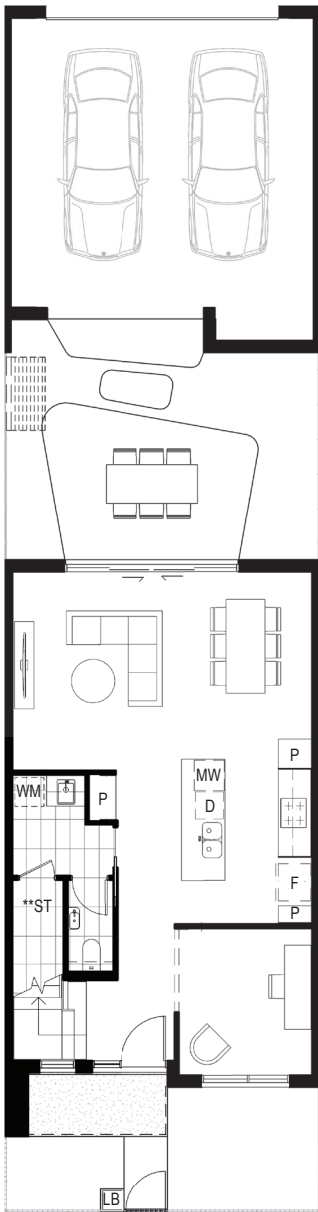
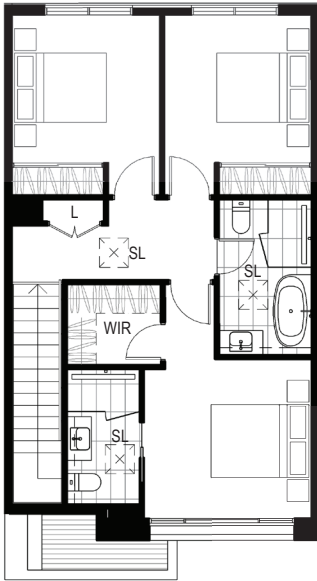


Townhomes



Ground Floor

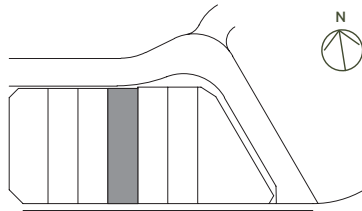


First Floor



PLAN SHOWS LOT 487
Address: 15 Cropping Street, Clyde North

AREA SPECIFICATIONS	
First Floor	67m ²
Ground Floor	70m ²
Sub Total	137m ²
Garage/Workshop	43m ²
Courtyard	17m ²
Porch	3m ²
Sub Total	63m ²
Total Area	200m ²



LOCATION PLAN



SCALE

D	Dishwasher	MW	Microwave Space	LB	Letter & Parcel Box	WIR	Walk in Robe
F	Fridge Space	P	Pantry	SL	Skylight	**ST	Low Head Height Storage
L	Linen	WIP	Walk in Pantry	WM	Laundry Appliance Space		

*Home size equals ground floor, first floor, and garage area. This floor plan was produced prior to construction and while the information contained herein is expected to be correct it is not guaranteed. Changes will undoubtedly be made in accordance with the contract for sale. The plan does not show additional features such as hot water systems, services or bulkheads necessary for services. Dimensions, areas and scale of floor plans are approximate only. Areas calculated in accordance with the Property Council of Australia Method of Measurement. The furniture and furnishings depicted are not included with any sale. Purchasers must refer to the contract of sale for the list of inclusions. Furnishings should not be taken to indicate the final position of power points, TV connection points & the like. All graphics, including design & extent of tile/paver/carpet areas, landscaping, balustrades, fencing, privacy screens and services equipment are for illustrative purposes only and are not to be relied on as a representative of the final product. Plans do not show additional features within each lot such as side and rear retaining walls. All level changes in the courtyards may not have been shown. DATE: 07/08/2023[G]