

HIGH FOREST

by mirvac

HOUSES

Lot 22

5 BEDROOM + FAMILY 3.5 BATH 2 CAR

Lower Ground Floor Area 55 m²

Ground Floor Area 58 m²

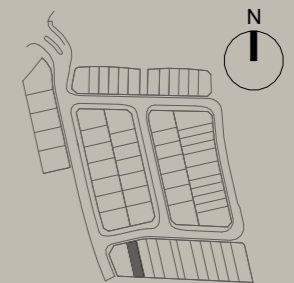
First Floor Area 96 m²

Garage Area 31 m²

Total Internal Area 209 m²

Total Balcony Area 16 m²

Lot Area 210 m²

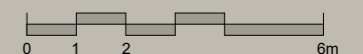


LEGEND - As Applicable

F	Fridge Space	S	Storage
P	Pantry	L	Linen
R	Non Trafficable Roof	HWU	Hot Water Unit
J	Joinery	CL	Clothes Line
□	Storm Water Pit	RWT	Water Tank
LB	Letter Box	AC	Air Conditioning
**	Vertical Screen	SL	Skylight
***	Window Shrouds	V	Void
RP	Raised Planter	PG	Pergola
B	Bin Enclosure	VB	Exterior Venetian Blind
O	Oven		

—	Fence	—	Retaining Wall
—	Retaining Wall		
—	With Fence On Top		

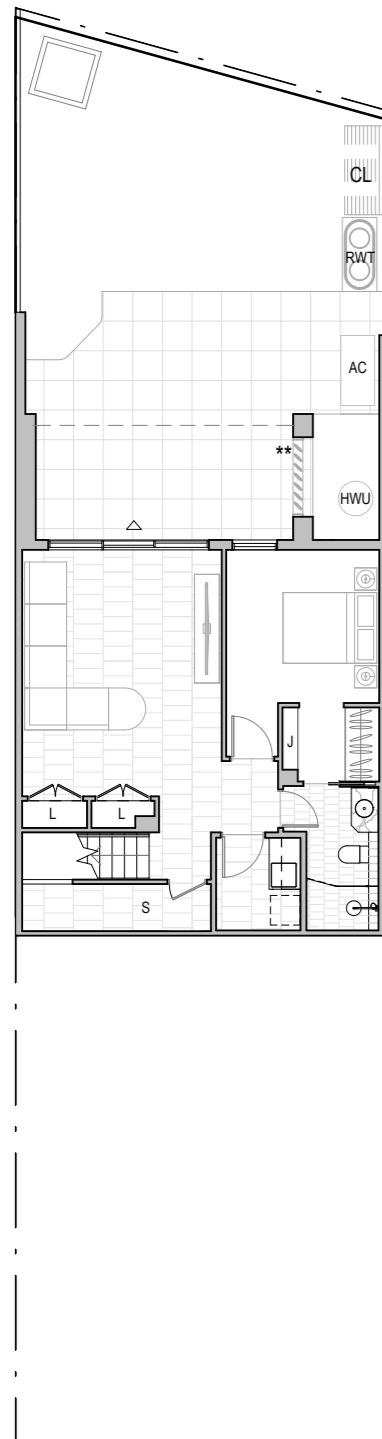
*Retaining walls and fences only applicable to Lower Ground and Ground Floor Plans



This floor plan was produced prior to construction and while the information contained herein is believed to be correct it is not guaranteed. Changes will undoubtedly be made in accordance with the contract for sale. Dimensions, areas and scale of floor plans are approximate only. Areas calculated in accordance with the Property Council of Australia Method of Measurement.

The furniture and furnishings depicted are not included with any sale. Purchasers must refer to the contract for sale for the list of inclusions. All graphics, including design and extent of tile/paver/carpet areas, landscaping, retaining walls, balustrades, pergolas, fencing, privacy screens and services equipment are for illustrative purposes only and are not to be relied on as a representative of the final product. All level changes within the lot may not been shown.

Rev. A [05.07.2024]



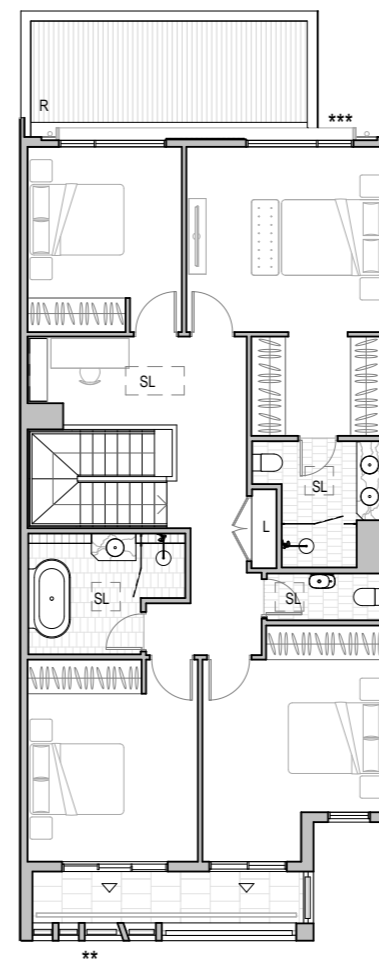
Lower Ground Floor



Ground Floor Plan



Front Elevation



First Floor Plan

