

# HIGH FOREST

by mirvac

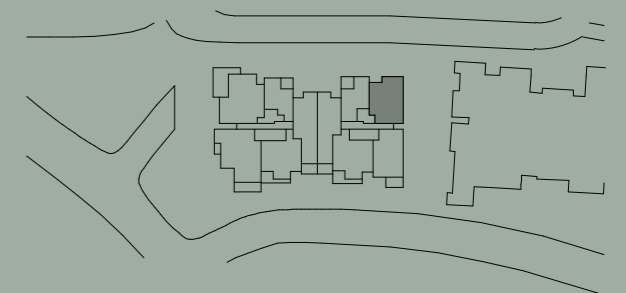
## APARTMENTS

Apartment No. 309 Building IRONBARK Lot No. 30

### 2 BEDROOM APARTMENT

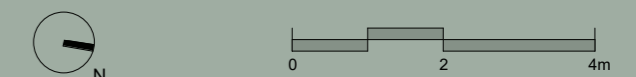
Internal Area 83 m<sup>2</sup>  
 Balcony Area 10 m<sup>2</sup>  
 Total Area 93 m<sup>2</sup>

Areas subject to change in accordance with the provisions of the contract. Area includes balcony and/or terrace where applicable. It excludes associated parking and external storage areas.

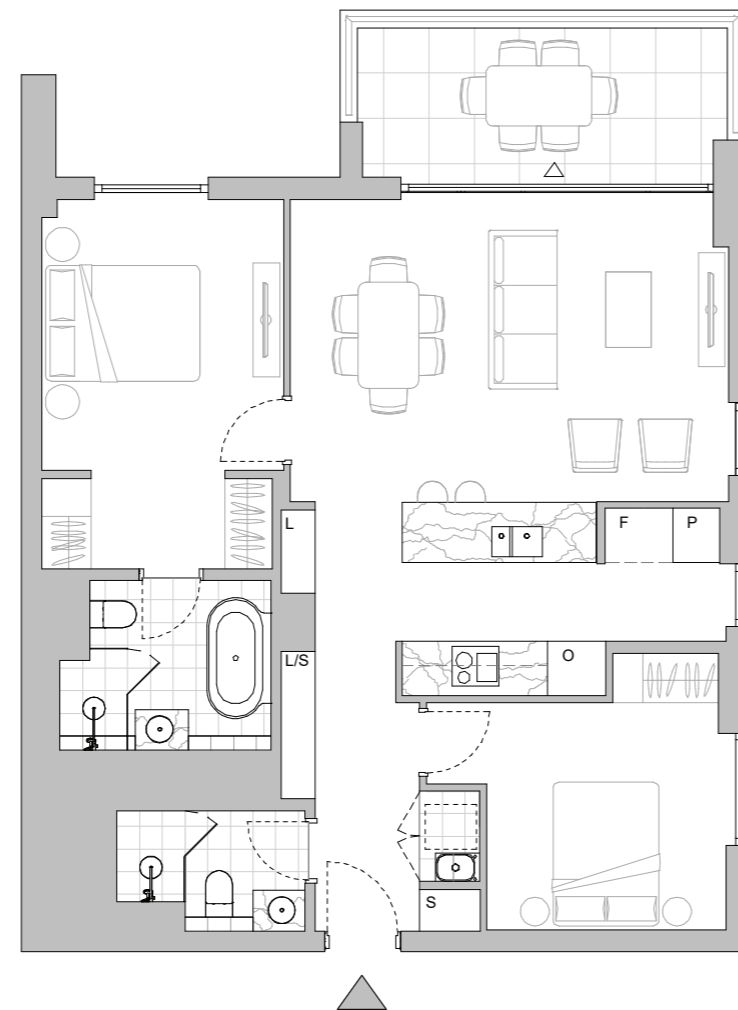


#### LEGEND - As Applicable

- |                |                  |                    |
|----------------|------------------|--------------------|
| ▲ Access       | △ Balcony Access | ** Vertical Screen |
| F Fridge Space | S Storage        | SL Skylight        |
| P Pantry       | L Linen          | — Pergola          |
| O Oven Stack   | K King Bed       | ⊗ Ceiling Fan      |
| M Media        | SY Study         |                    |



This floor plan was produced prior to construction and while the information contained herein is believed to be correct it is not guaranteed. Changes will undoubtedly be made in accordance with the contract for sale. The plan does not show additional features such as hot water systems, services or bulkheads necessary for services. Dimensions, areas and scale of floor plans are approximate only. Areas calculated in accordance with the Strata Schemes Development Act 2015. The furniture and furnishings depicted are not included with any sale. Purchasers must refer to the contract for sale for the list of inclusions. Furnishings should not be taken to indicate the final position of power points, TV connection points and the like. All graphics, including design and extent of tile/paver/carpet areas, landscaping, balustrades are for illustrative purposes only and are not to be relied on as a representative of the final product.



LEVEL 3