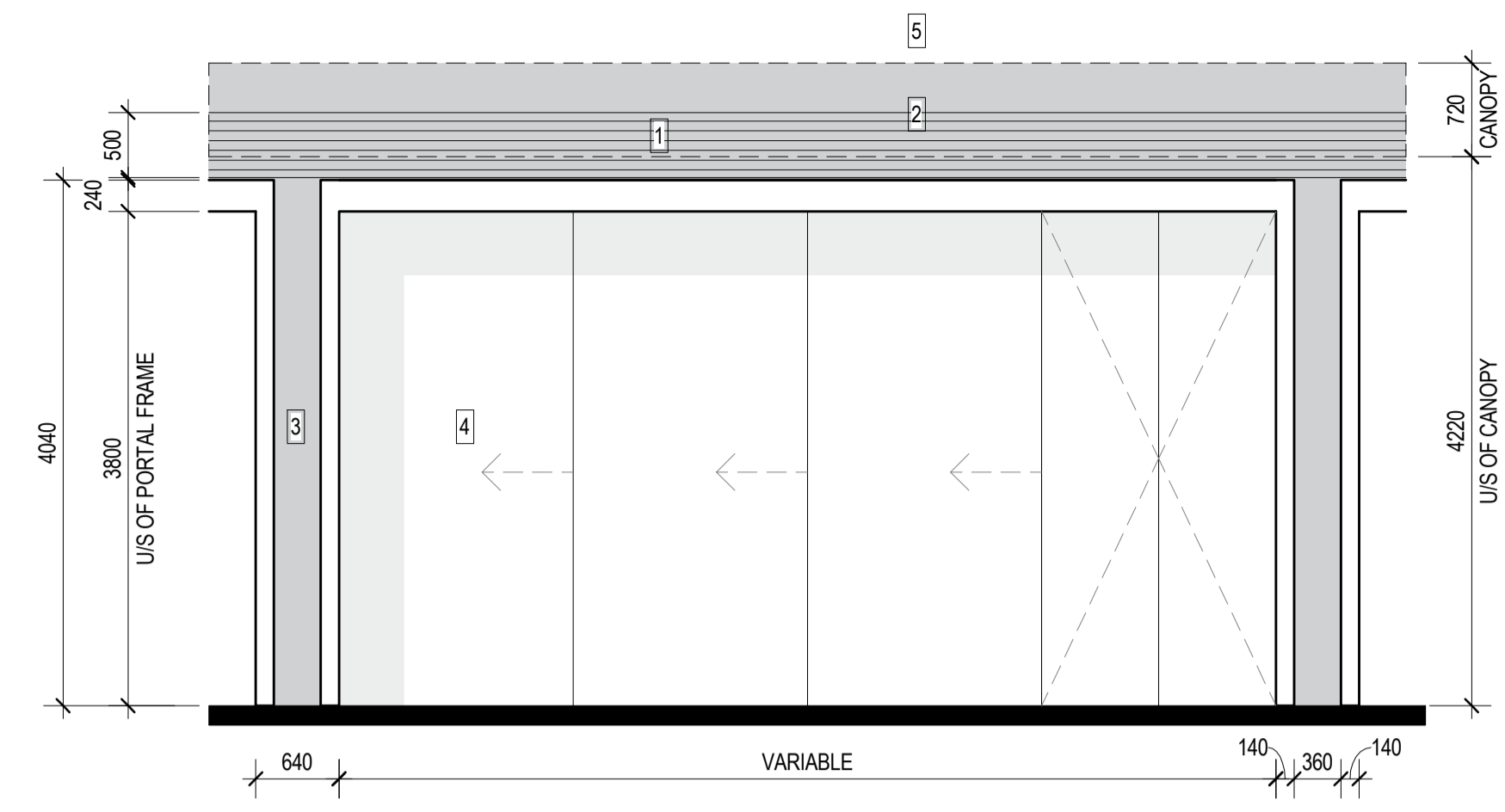


- 1 - BASE BUILD - SERVICES ZONE
- 2 - BASE BUILD - CANOPY ZONE
- 3 - CONFIGURABLE - FIXED PANEL
- 4 - CONFIGURABLE - SHOPFRONT PANELS
- 5 - BASE BUILD - COMMERCIAL FACADE

1 Typical Sliding Operability With Integrated Bar Seating
1:50

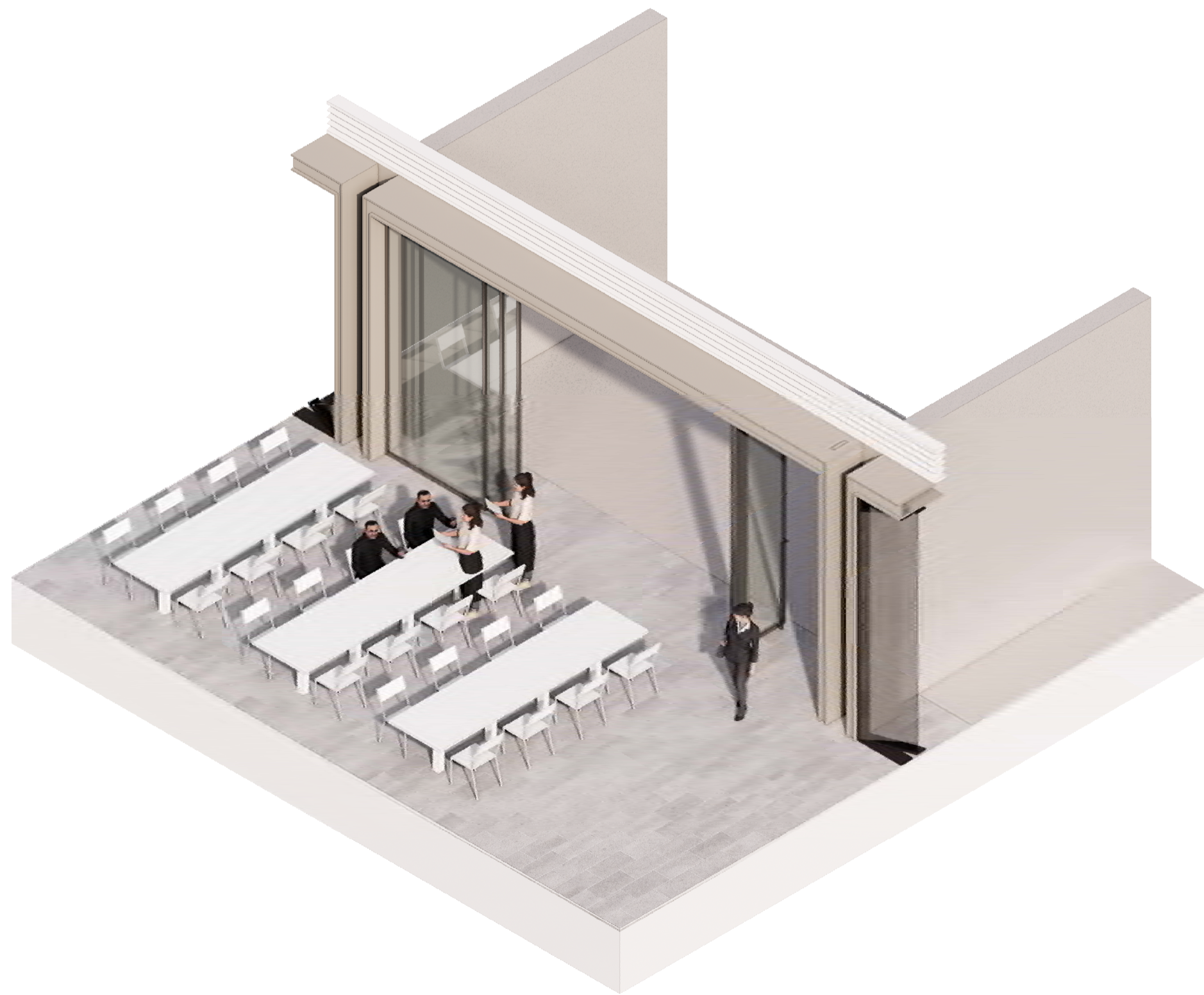


- 1 - BASE BUILD - SERVICES ZONE
- 2 - BASE BUILD - CANOPY ZONE
- 3 - CONFIGURABLE - FIXED PANEL
- 4 - CONFIGURABLE - SHOPFRONT PANELS
- 5 - BASE BUILD - COMMERCIAL FACADE


2 Typical Sliding Operability With Double Swing Door
1:50



Typical Sliding Operability with Integrated Bar Seating - Illustrative Axonometric (NOT TO SCALE)



Typical Sliding Operability with Double Swing Door - Illustrative Axonometric (NOT TO SCALE)



Department of Planning and Environment

Issued under the Environmental Planning and Assessment Act 1979
Approved Application No: SSD 49295711

Granted on: 4 December 2023

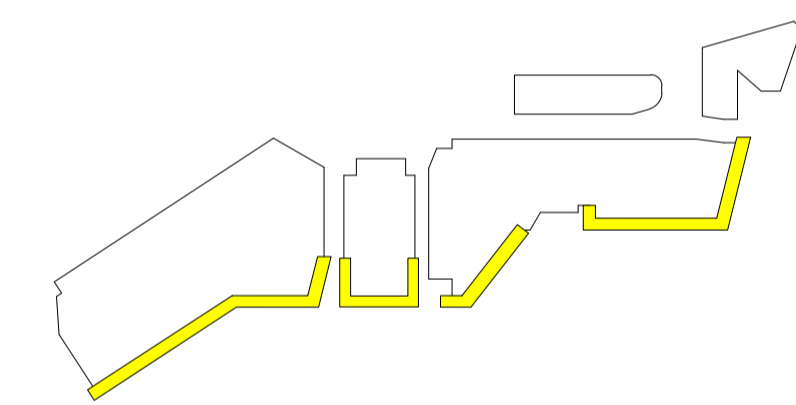
Signed: AW Sheet No: 96 of 138

NOTES

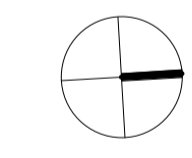
1. Do not scale drawing. Written dimensions govern
2. All dimensions are in millimeters unless noted otherwise
3. All dimensions shall be verified on site before proceeding with the work. Snøhetta + Hassell shall be notified in writing of any discrepancies.
4. This drawing must be read in conjunction with all relevant contracts, specifications and drawings

This drawing is an uncontrolled copy. Unless noted otherwise
© Copyright of this drawing is vested in Snøhetta and Hassell

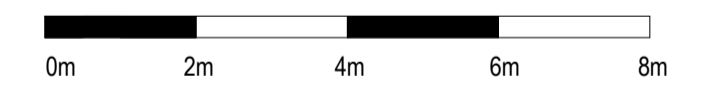
REV	DESCRIPTION	DATE
A	For SSDA2 RTS	03/10/2023



NORTH



SCALE



CLIENT



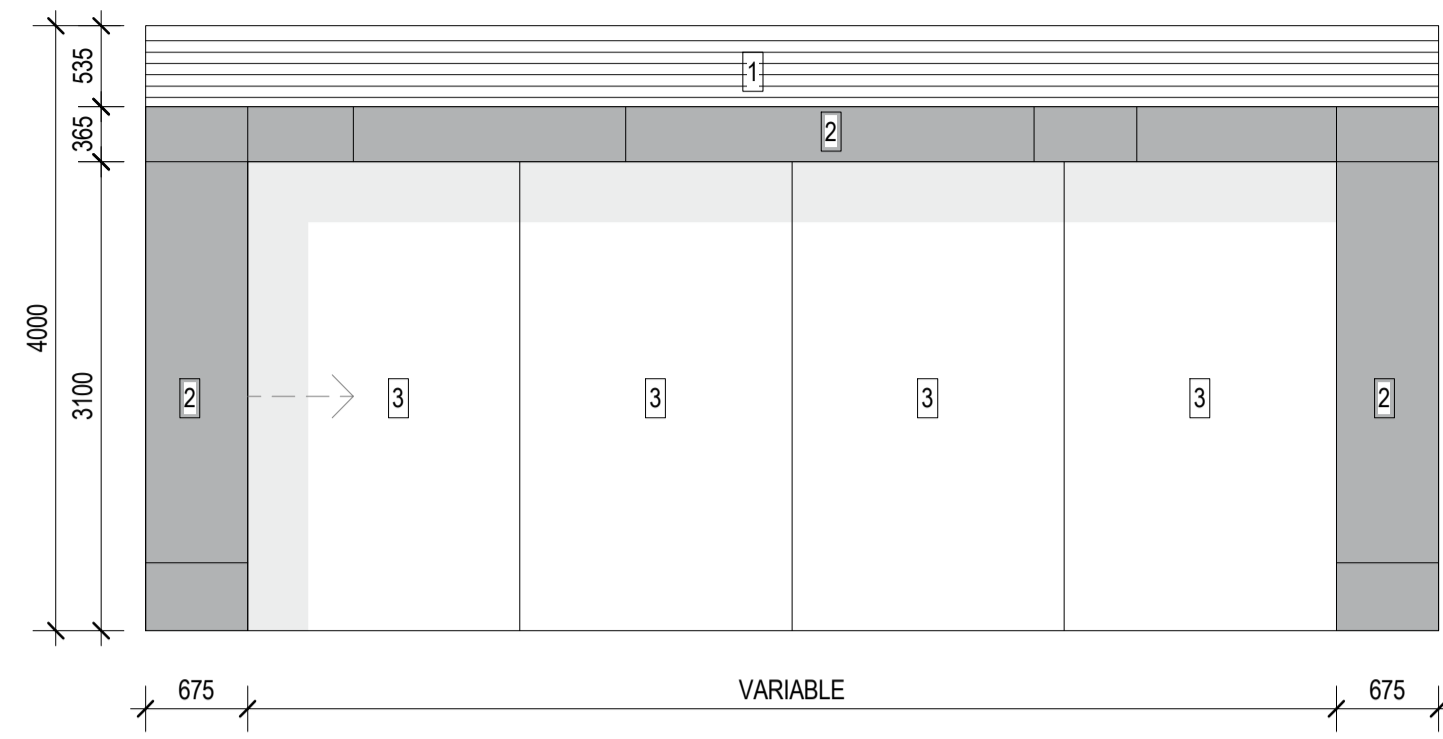
PROJECT

HARBOURSIDE
2-10 Darling Drive, Sydney, NSW, 2000

DRAWING TITLE

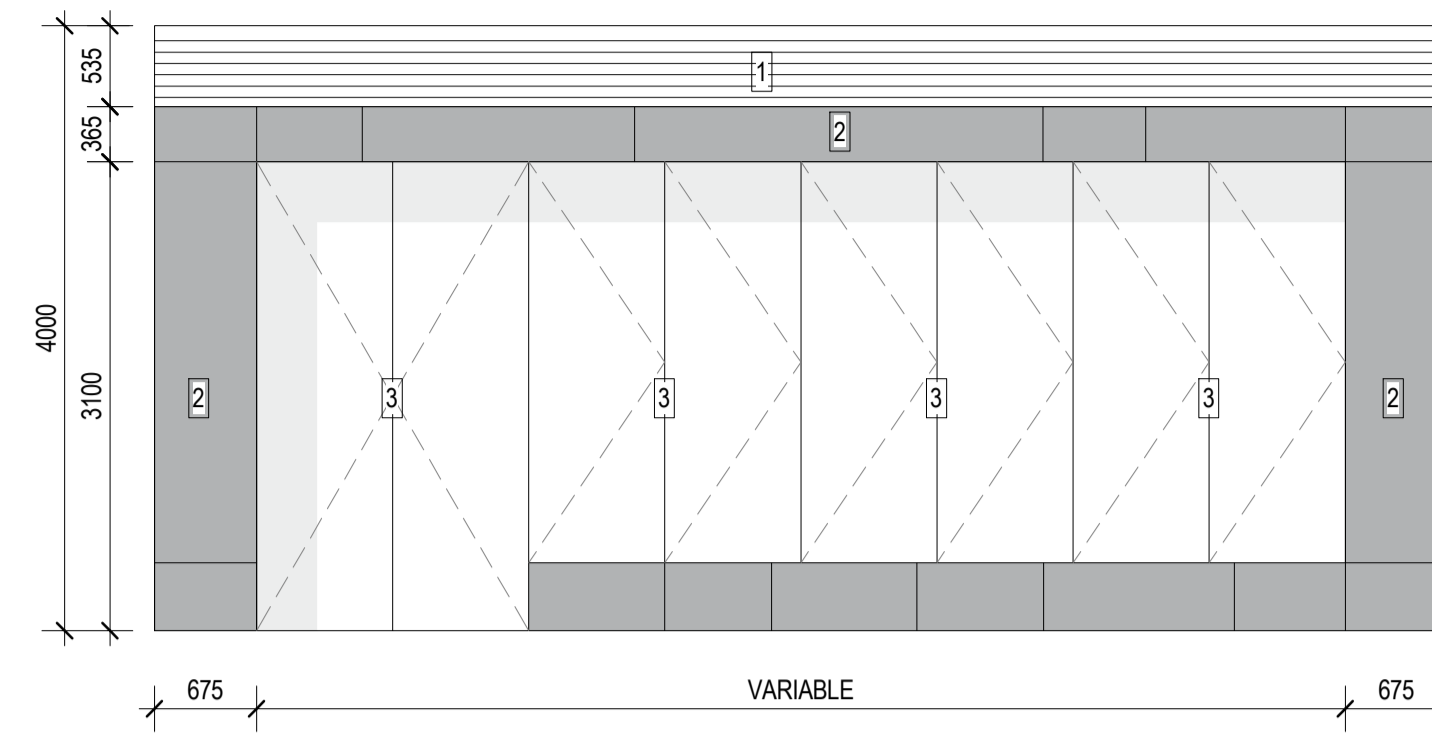
TYPICAL FACADE ELEVATIONS - RETAIL

REVIEWED Checker	SCALE @ A1 As indicated
APPROVED Approver	PROJECT NO. 016152-61A-P
DRAWING NO. AR-SSDA2-4011_00	REV NO. A



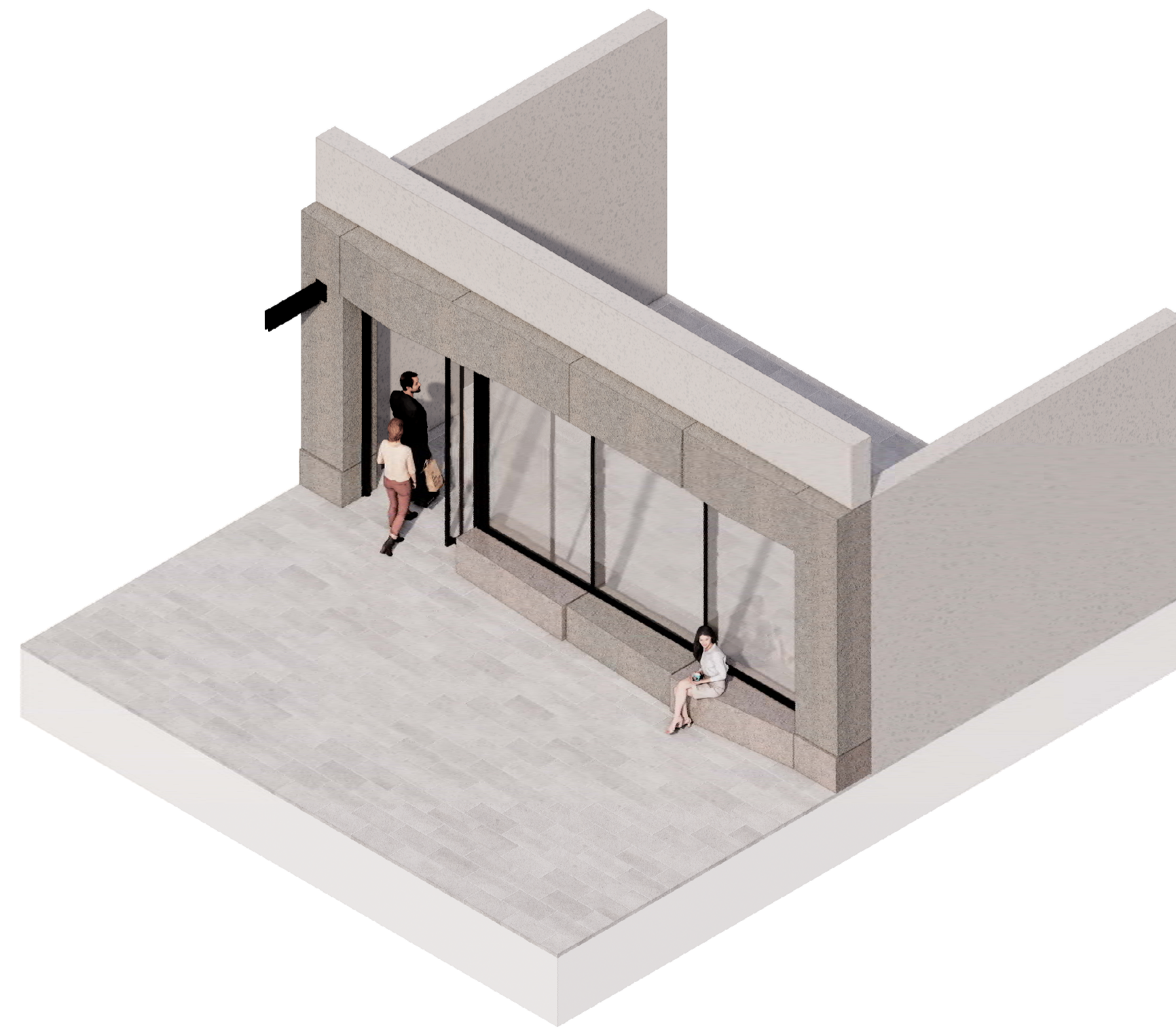
- 1 - BASE BUILD - SERVICES ZONE
- 2 - BASE BUILD - FIXED PANEL
- 3 - CONFIGURABLE - SHOPFRONT PANELS

1 Typical Fixed Panel Sliding Door
1:50

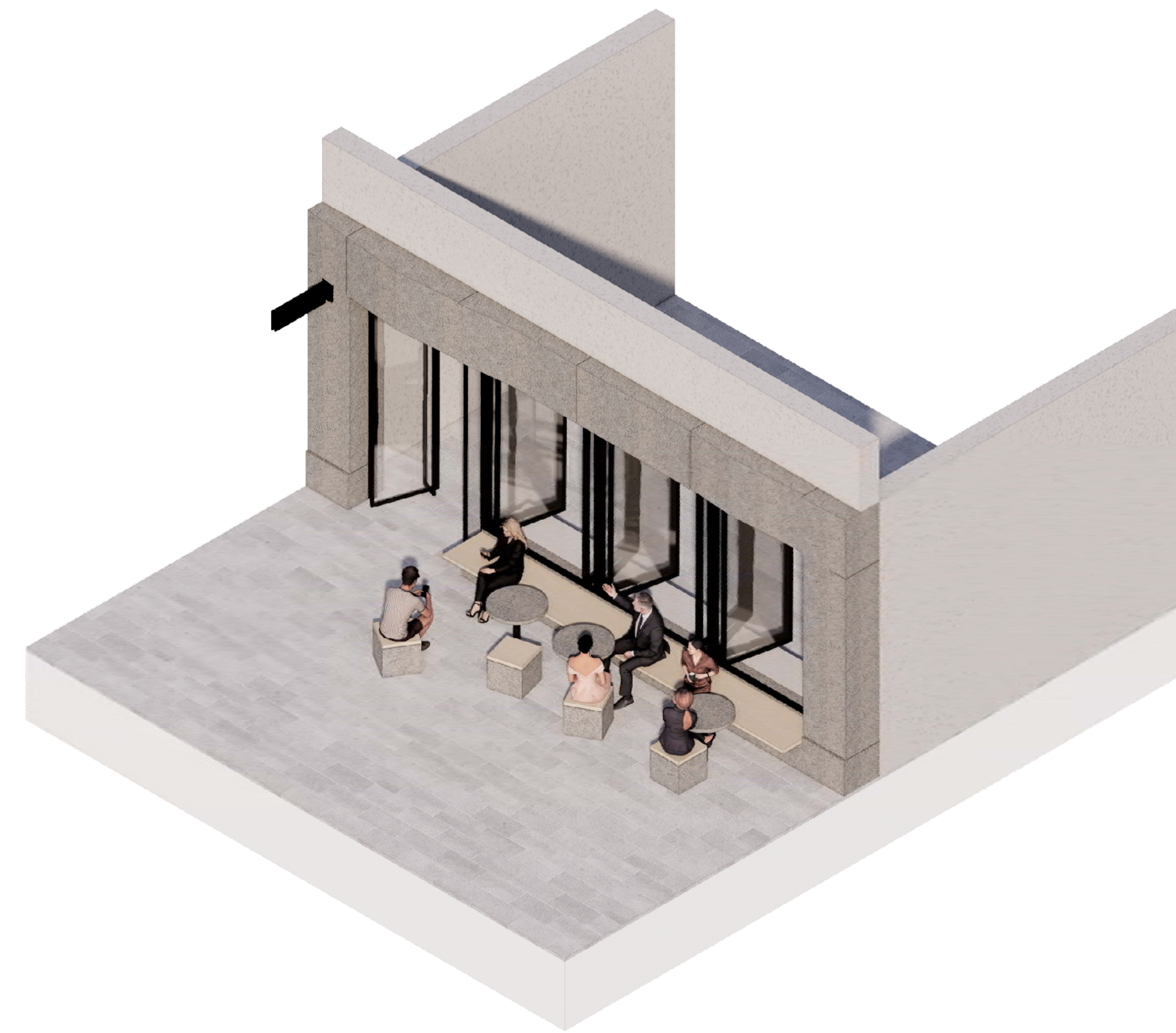


- 1 - BASE BUILD - SERVICES ZONE
- 2 - BASE BUILD - FIXED PANEL
- 3 - CONFIGURABLE - SHOPFRONT PANELS

2 Typical Operable Shopfront with Integrated Seating (A)
1:50



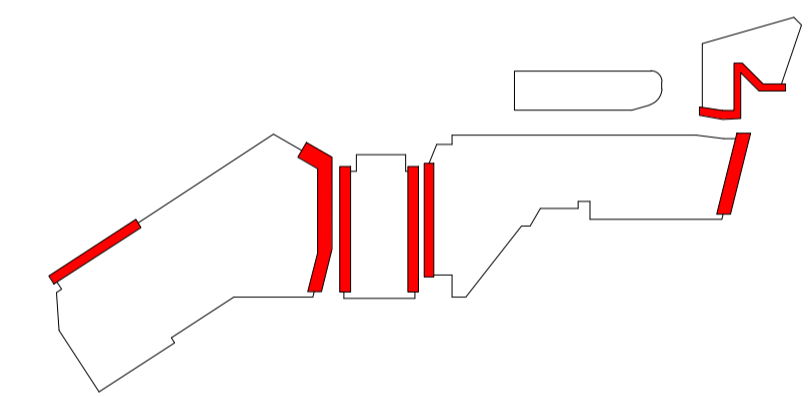
Typical Fixed Panel Sliding Door - Illustrative Axonometric (NOT TO SCALE)



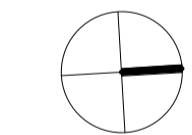
Typical Operable Shopfront with Integrated Seating (A) - Illustrative Axonometric (NOT TO SCALE)

- NOTES**
1. Do not scale drawing. Written dimensions govern
 2. All dimensions are in millimeters unless noted otherwise
 3. All dimensions shall be verified on site before proceeding with the work. Snohetta + Hassell shall be notified in writing of any discrepancies.
 4. This drawing must be read in conjunction with all relevant contracts, specifications and drawings
- This drawing is an uncontrolled copy. Unless noted otherwise
© Copyright of this drawing is vested in Snohetta and Hassell

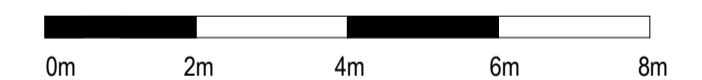
REV	DESCRIPTION	DATE
A	For SSDA2 RTS	03/10/2023



NORTH



SCALE



CLIENT



PROJECT

HARBOURSIDE
2-10 Darling Drive, Sydney, NSW, 2000

DRAWING TITLE

TYPICAL FACADE ELEVATIONS - RETAIL

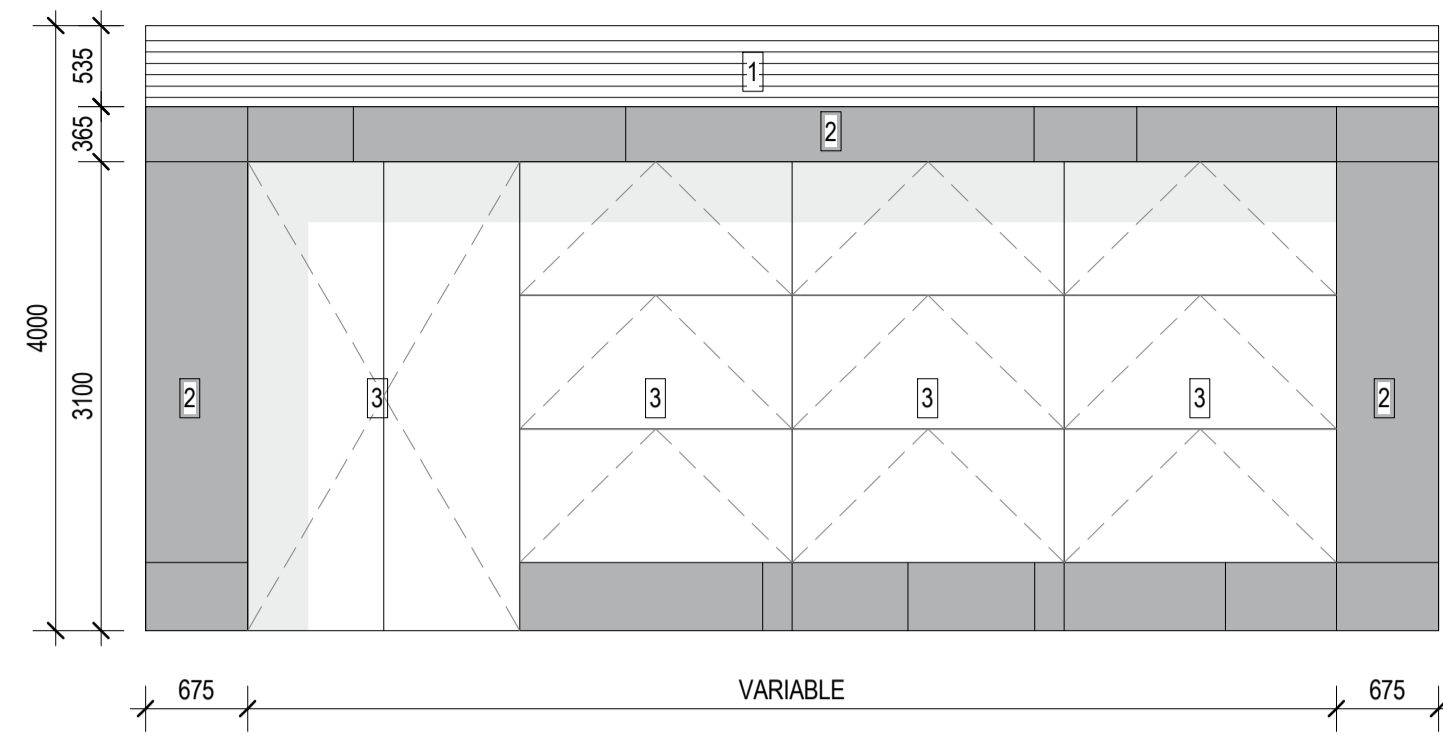
REVIEWED MI	SCALE @ A1 As indicated
APPROVED KK	PROJECT NO. 016152-61A-P
DRAWING NO. AR-SSDA2-4012_00	REV NO. A



Issued under the Environmental Planning and Assessment Act 1979
Approved Application No: SSD 49295711

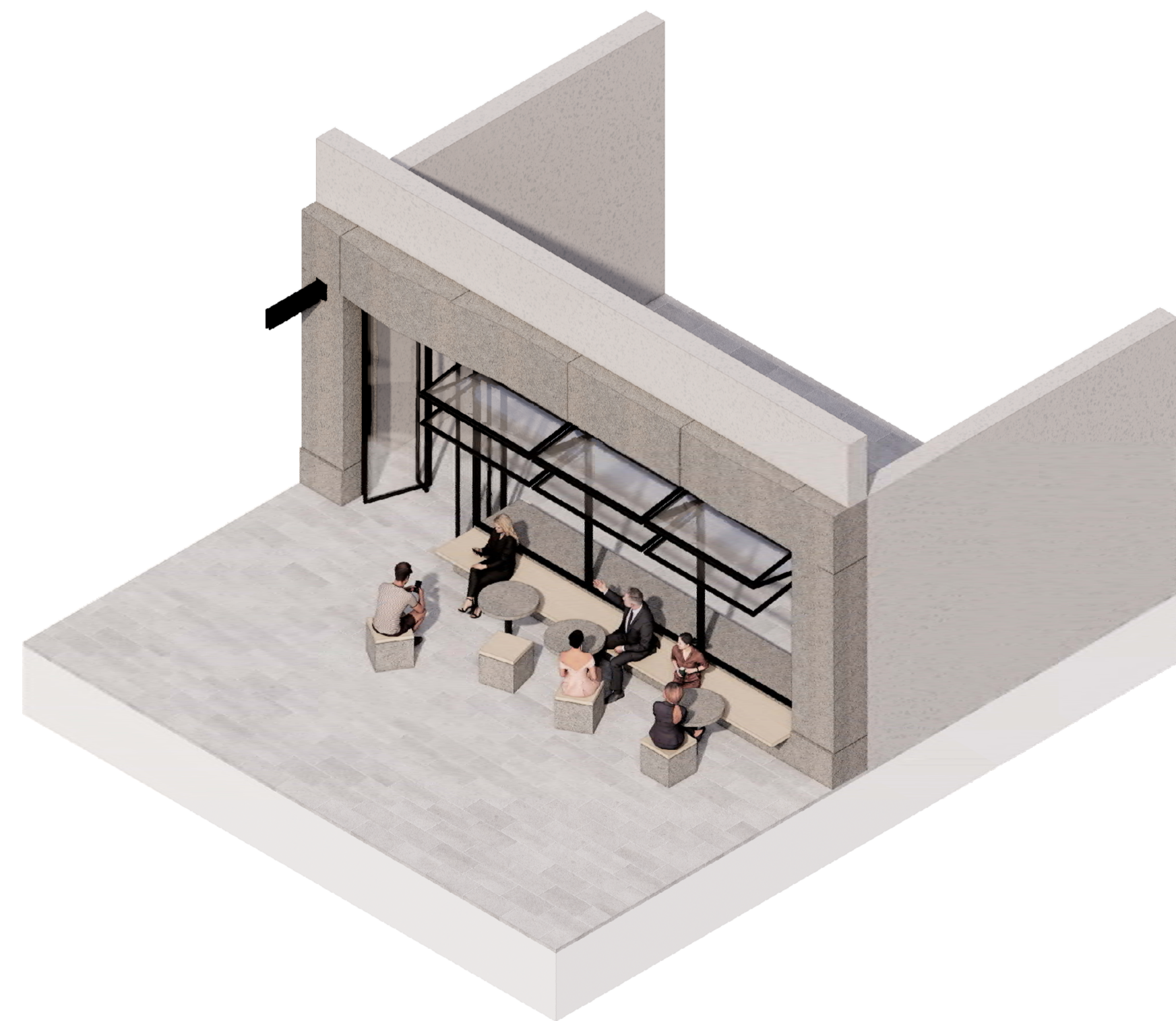
Granted on: 4 December 2023

Signed: AW Sheet No: 97 of 138

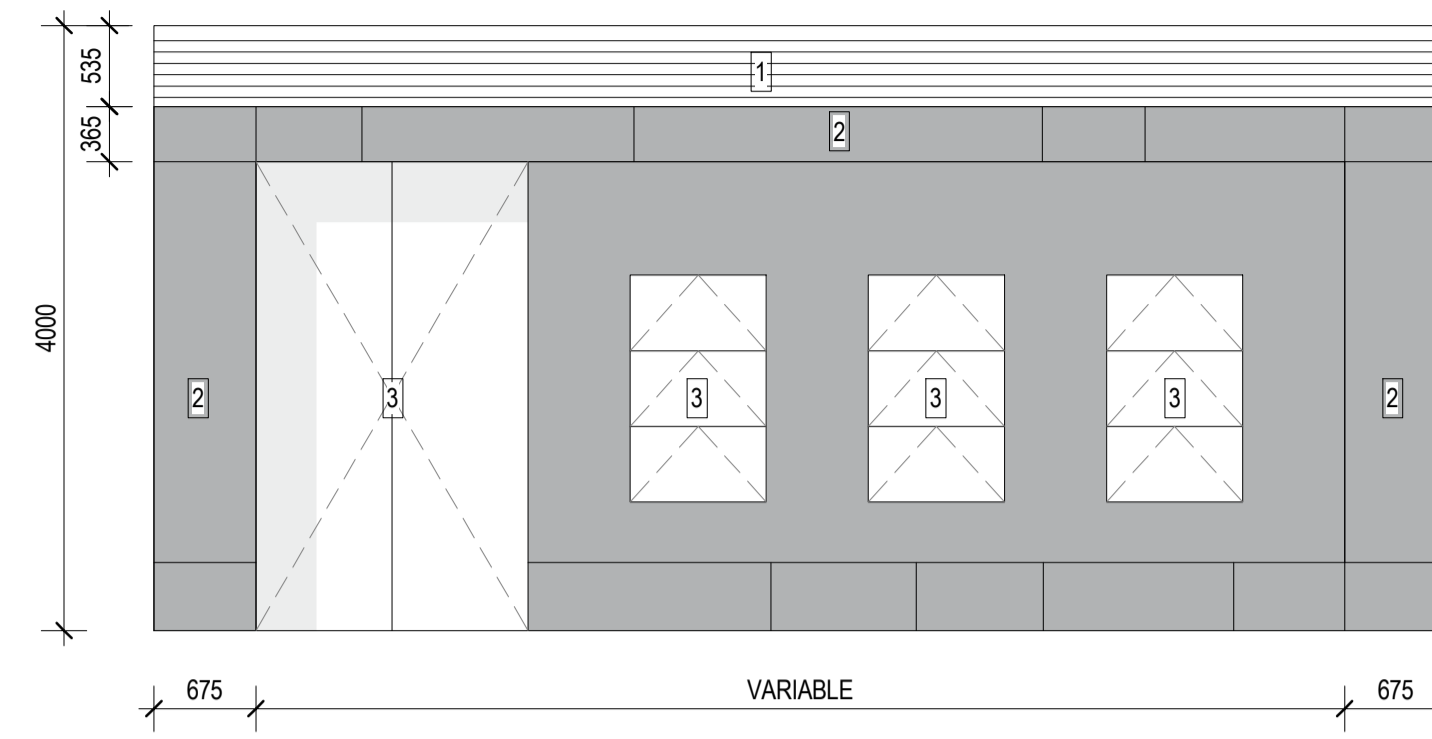


1 - BASE BUILD - SERVICES ZONE
 2 - BASE BUILD - FIXED PANEL
 3 - CONFIGURABLE - SHOPFRONT PANELS

3 Typical Operable Shopfront with Integrated Seating (B)
 1:50

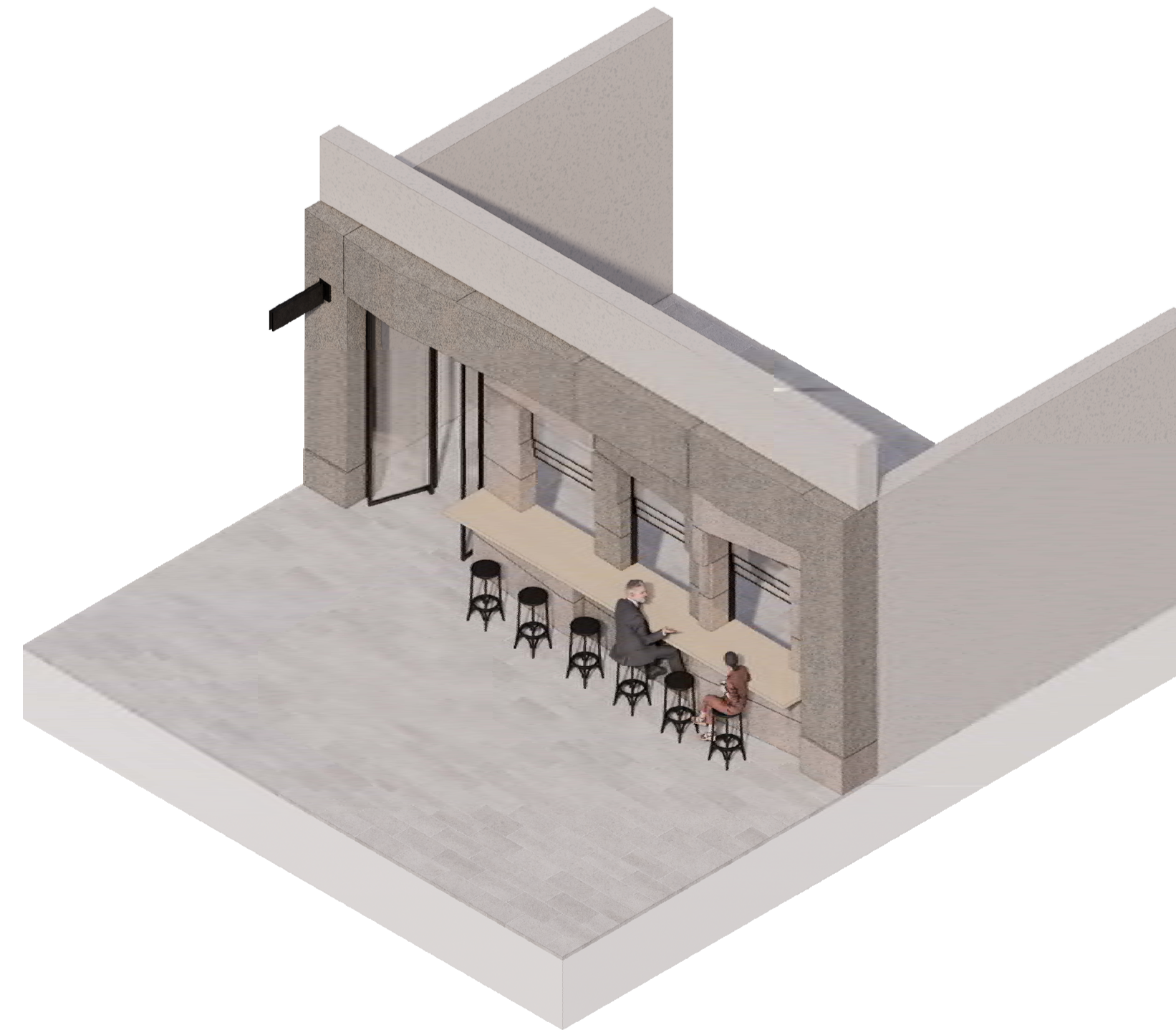


Typical Operable Shopfront with Integrated Seating (B) - Illustrative Axonometric (NOT TO SCALE)



1 - BASE BUILD - SERVICES ZONE
 2 - BASE BUILD - FIXED PANEL
 3 - CONFIGURABLE - SHOPFRONT PANELS

4 Typical Operable Shopfront with Integrated Servery
 1:50



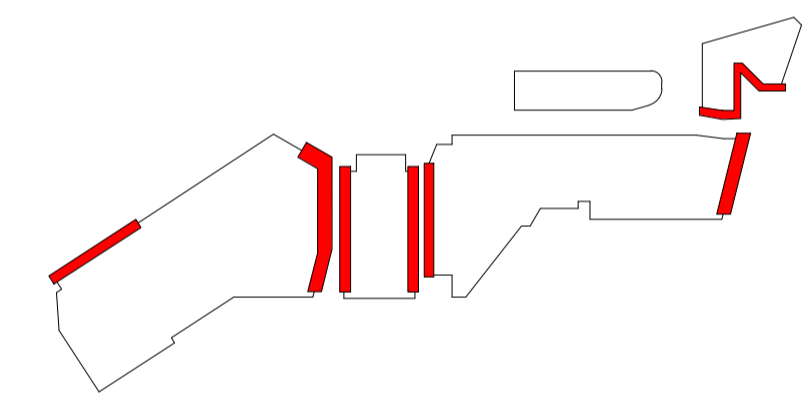
Typical Operable Shopfront with Integrated Servery - Illustrative Axonometric (NOT TO SCALE)

NOTES

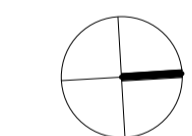
- Do not scale drawing. Written dimensions govern
- All dimensions are in millimeters unless noted otherwise
- All dimensions shall be verified on site before proceeding with the work. Snøhetta + Hassell shall be notified in writing of any discrepancies.
- This drawing must be read in conjunction with all relevant contracts, specifications and drawings

This drawing is an uncontrolled copy. Unless noted otherwise
 © Copyright of this drawing is vested in Snøhetta and Hassell

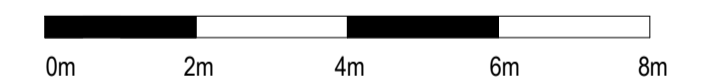
REV	DESCRIPTION	DATE
A	For SSDA2 RTS	03/10/2023



NORTH



SCALE



CLIENT


PROJECT
 HARBOURSIDE
 2-10 Darling Drive, Sydney, NSW, 2000

DRAWING TITLE
 TYPICAL FACADE ELEVATIONS - RETAIL

REVIEWED Checker	SCALE @ A1 As indicated
APPROVED Approver	PROJECT NO. 016152-61A-P
DRAWING NO. AR-SSDA2-4013_00	REV NO. A



Issued under the Environmental Planning and Assessment Act 1979
 Approved Application No: SSD 49295711

Granted on: 4 December 2023

Signed: AW Sheet No: 98 of 138