



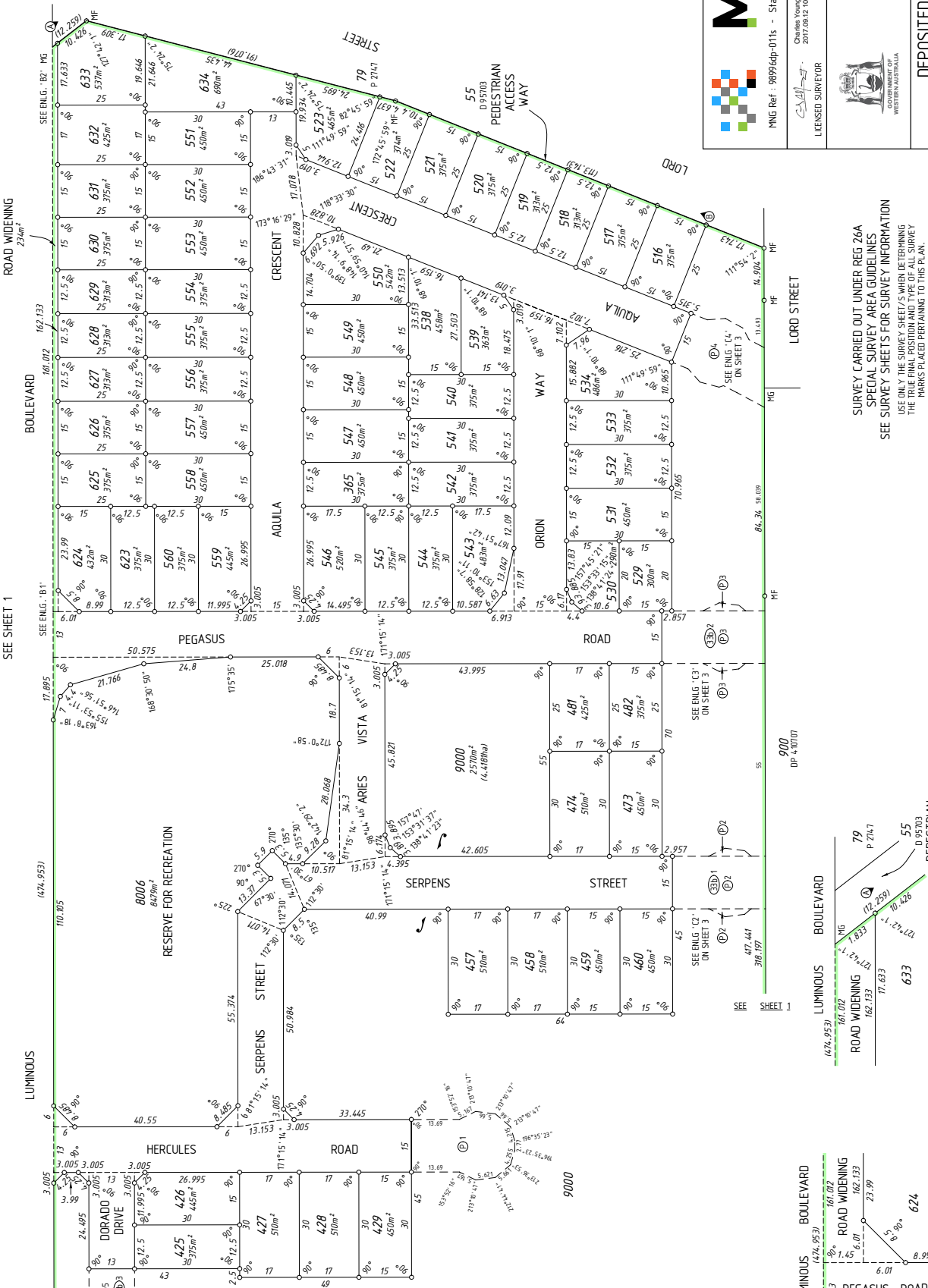
FOR HEADING SEE SHEET 1  
FOR INTERESTS AND NOTIFICATIONS  
SEE SHEET 1



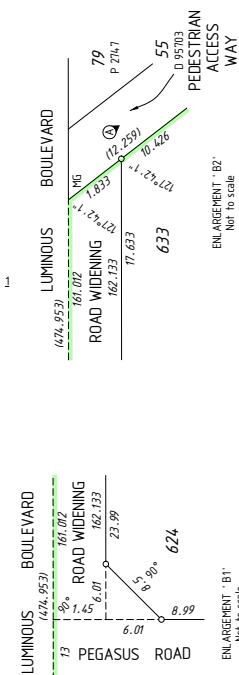
MNG Ref: 98996dp-011s - Stage 1 - DP4/11129\_LSD  
Charles Munn  
2017.08.12 00:31:28+0800  
DATE  
LICENSED SURVEYOR



DEPOSITED PLAN  
**4 11129**  
SHEET 02 OF 03 SHEETS  
VERSION 2



SURVEY CARRIED OUT UNDER REG 26A  
SPECIAL SURVEY AREA GUIDELINES  
SEE SURVEY SHEETS FOR SURVEY INFORMATION  
USE ONLY THE SURVEY SHEETS WHEN DETERMINING  
THE TRUE FINAL POSITION AND TYPE OF ALL SURVEY  
MARKS PLACED PERTAINING TO THIS PLAN.



HELD BY LANDGATE IN DIGITAL FORMAT ONLY



FOR HEADING SEE SHEET 1

THIS SURVEY SHEET WILL BE  
REPLACED BY THE SURVEY DATA



Landgate

DEPOSITED PLAN  
**4 11129**  
SURVEY SHEET

HELD BY LANDGATE IN DIGITAL FORMAT ONLY

# P411129

| <u>Lot Number</u> | <u>Part</u> | <u>Register Number</u> | <u>Section</u> | <u>Lot Number</u> | <u>Part</u> | <u>Register Number</u> | <u>Section</u> |
|-------------------|-------------|------------------------|----------------|-------------------|-------------|------------------------|----------------|
| 365               |             | 2936/294               |                | 425               |             | 2936/295               |                |
| 426               |             | 2936/296               |                | 427               |             | 2936/297               |                |
| 428               |             | 2936/298               |                | 429               |             | 2936/299               |                |
| 457               |             | 2936/300               |                | 458               |             | 2936/301               |                |
| 459               |             | 2936/302               |                | 460               |             | 2936/303               |                |
| 473               |             | 2936/304               |                | 474               |             | 2936/305               |                |
| 481               |             | 2936/306               |                | 482               |             | 2936/307               |                |
| 516               |             | 2936/308               |                | 517               |             | 2936/309               |                |
| 518               |             | 2936/310               |                | 519               |             | 2936/311               |                |
| 520               |             | 2936/312               |                | 521               |             | 2936/313               |                |
| 522               |             | 2936/314               |                | 523               |             | 2936/315               |                |
| 529               |             | 2936/316               |                | 530               |             | 2936/317               |                |
| 531               |             | 2936/318               |                | 532               |             | 2936/319               |                |
| 533               |             | 2936/320               |                | 534               |             | 2936/321               |                |
| 538               |             | 2936/322               |                | 539               |             | 2936/323               |                |
| 540               |             | 2936/324               |                | 541               |             | 2936/325               |                |
| 542               |             | 2936/326               |                | 543               |             | 2936/327               |                |
| 544               |             | 2936/328               |                | 545               |             | 2936/329               |                |
| 546               |             | 2936/330               |                | 547               |             | 2936/331               |                |
| 548               |             | 2936/332               |                | 549               |             | 2936/333               |                |
| 550               |             | 2936/334               |                | 551               |             | 2936/335               |                |
| 552               |             | 2936/336               |                | 553               |             | 2936/337               |                |
| 554               |             | 2936/338               |                | 555               |             | 2936/339               |                |
| 556               |             | 2936/340               |                | 557               |             | 2936/341               |                |
| 558               |             | 2936/342               |                | 559               |             | 2936/343               |                |
| 560               |             | 2936/344               |                | 623               |             | 2936/345               |                |
| 624               |             | 2936/346               |                | 625               |             | 2936/347               |                |
| 626               |             | 2936/348               |                | 627               |             | 2936/349               |                |
| 628               |             | 2936/350               |                | 629               |             | 2936/351               |                |
| 630               |             | 2936/352               |                | 631               |             | 2936/353               |                |
| 632               |             | 2936/354               |                | 633               |             | 2936/355               |                |
| 634               |             | 2936/356               |                | 8006              |             | LR 3168/658            |                |