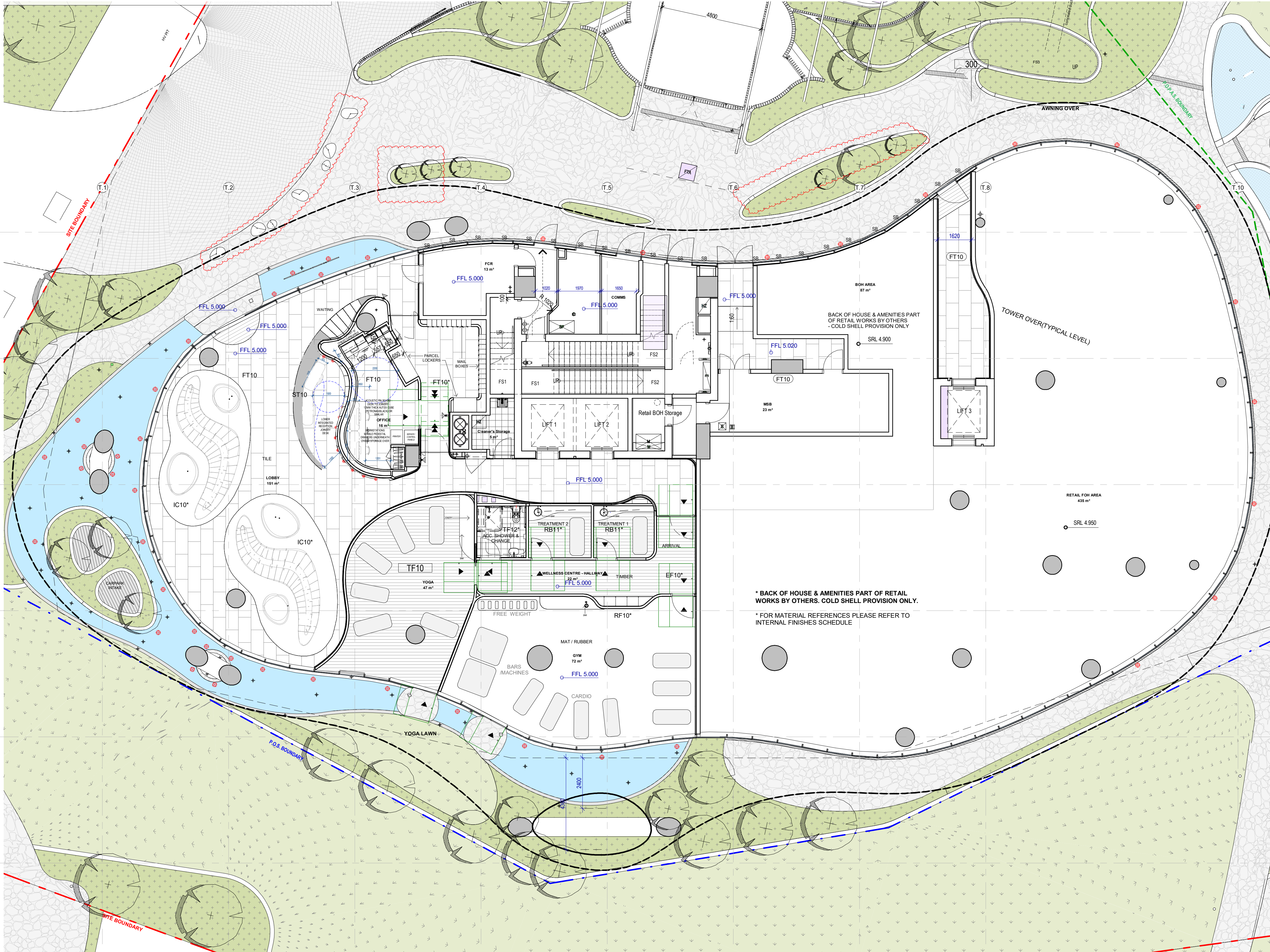


MAIL ROOM //

MAILBOXES	Column	21	PARCEL LOCKERS	Column	5
	Rows	7		Rows	3
	Total Mailboxes	147		Total Parcel Lockers	15
	Column Width	224		Column Width	600
	Overall Height	1165		Height (Per Locker)	388
	Overall Width	4928		Overall Width	1800



GENERAL ABBREVIATIONS

Rooms:	Common Area:
B1 - Bedroom 1	FS - Fire Stair
B2 - Bedroom 2	LOBBY - Lobby
B3 - Bedroom 3	FHR - Fire Hose Reel
B - Bathroom	EL - Electrical Cupboard
BY - Balcony	COM - Communications Cupboard
D - Dining	GC - Garbage Chute
E - Entry	ST - Store
EN - Ensuite	GYM - Gym
F - Family	SER - Service Cupboard
K - Kitchen	LR - Lobby Relief
L - Living	LS - Lobby Supply
(including Corridors)	SP - Stair Press
LN - Linen	A/O - Automatic Opener
LDY - Laundry	Services:
M - Media	SER - Service Cupboard
PR - Powder Room	PFE - Portable Fire Extinguisher
ST - Study	PH - Fire Hydrant
S - Store	FHR - Fire Hose Reel
TERR - Terrace	HR - Hydraulic Riser
WIR - Walk in Robe	
A - Awning Window	General:
	U.N.O - Unless Noted Otherwise
	C.O.S - Confirm On Site
	(S) - Silver Liveable Apt/Space
	(G) - Gold Liveable Apt/Space

GENERAL NOTES - SHEET NUMBER

Refer to 1000 series drawings for General Arrangement Drawings
1000's Plans
1050's Elevations
1060's Sections
Refer to 1500 series drawings for Reflected Ceiling Plans
Refer to 1700 series drawings for Wet Areas & Joinery details
Refer to 1800 series drawings for Window, Door, Metalwork & other details
Refer Electrical Consultant Documentation for Lighting
Refer Landscape Documentation
Refer Relevant DA Drawings and Documentation for Submitted DA
Refer Finishes Schedules
A0101 Internal Finishes - Apartments
A0102 Internal Finishes - Public Areas
A0103 External Finishes
Refer Relevant Consultant Documentation Drawings
Refer to Liveable Housing Design Guidelines for all Silver and Gold compliance requirements

GENERAL NOTES

1. Design Resolution
1.1 The drawings represent general architectural intent for the purpose of this development application only.
1.2 The internal layout is shown indicatively and is subject to further design development.
1.3 The dimensions shown are general only and are subject to further design resolution.
1.4 Location of car park entry point is general only and will be confirmed and dimensioned at later stage.
1.5 The size and position of louvre sun screens is indicative and shown in open and closed positions.
1.6 Ceiling RL (where shown) indicates general ceiling design level only, which does account for services bulkheads or similar partial ceiling protrusions.
1.7 Landscape component is shown indicatively only and subject to further design development at later stage.
1.8 Location of plant, equipment and services on drawings is general and indicative only, and does not include minor elements, such as vent pipes, flues, aerials, etc.
1.9 Balcony areas do not include planters
1.10 All apartment entry and internal doors to be full height
2. Graphic presentation
2.1 Colours presented on drawings are generic only and indicative of the architectural design intent. Some colour distortion may also occur in the printing process.
2.2 Refer external materials drawing for finishes
3. Existing Structures and Services
3.1 Extent and location of existing structures and services is according to the available survey information and will need to be verified on site at later stage.
3.2 All unchanged site levels are as per the existing survey information.

KEY - UPSTANDS



SHADOWBOX DETAILING

UNLESS NOTED OTHERWISE - ALL FACADE LOCATIONS WITH INTERNAL ELEMENTS ABUTTING / ADJOINING WILL BE SHADOW BOX GLAZING.

28.02.2024	4	Amendment as clouded
05.02.2024	3	Issued for Information - Rollout Updated
15.12.2023	2	Issued for Information
04.08.2023	1	Issued for Construction - Update to Accessible Wet Areas
12.04.2023	U	Door between Gym and Yoga detailed
31.03.2023	T	Updated Miscellaneous Metalworks Details

For previous versions refer to Document Control History	
Date	
REV	
amendment	
MIRVAC DESIGN	
Level 20 200 George St Sydney NSW 2000 Tel: 02 9550 8000	
architectural interior design graphic design	
Mirvac Design Pty Ltd ABN 15 002 359 153	
Mirvac Design Nominees / Responsible Architects Anda Terna, Michael Walker, David Hird, Pennyroyal, Sotiroudi, Andrew La Nicolas Thibaut https://www.mirvacdesign.com/nominated-architects	

project:
Quay
57 Skyring Terrace, Newstead

title:
**General Arrangement
L01 - Tower**

job no: 4.803.1
drawing no: **A1001**
date: 28.02.2024 scale @ A1: 1 : 100 rev: **4**

Copyright of the design and other information shown here is owned by Mirvac Design Pty Ltd. Reproduction or use of the design by any party for any purpose is expressly prohibited without the written permission of Mirvac Design Pty Ltd.