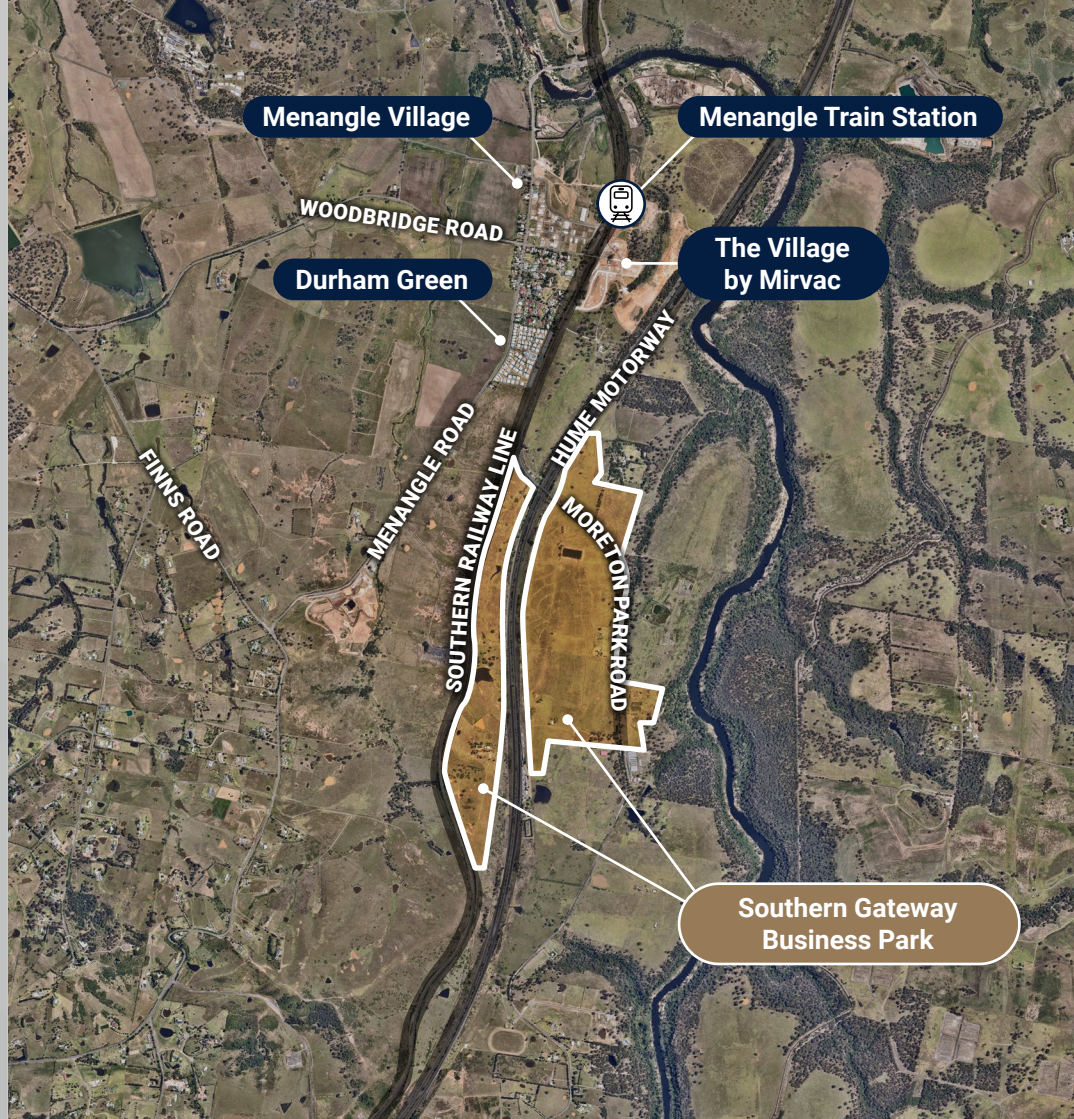


Southern Gateway Business Park, Menangle

Invitation

Community Drop-In Session



Mirvac recently lodged a Planning Proposal with Wollondilly Shire Council seeking approval to rezone approximately 150 hectares of land along Moreton Park Road, Menangle from RU1 Primary Production and RU2 Rural Landscape to E4 General Industrial.

If approved, the Proposal will permit employment land uses and enable the delivery of the Southern Gateway Business Park (SGBP), creating new jobs for the area.

Community Drop-In Session

You are invited to attend a Community Drop-In Session where you can find out more, ask questions and meet the Project Team. Details:



Wednesday,
6 Sept 2023



6pm to 8pm



Manor Room, Menangle Country Club, 170 Menangle Road,
Menangle Park, NSW 2563

*Please note all attendees will need to bring a form of ID to check in to Club Menangle upon arrival.



Register for the event by scanning the QR code or by emailing menanglebusinesspark@urbis.com.au or phone **1800 244 863**.

For more information visit our website: <https://menangle.mirvac.com/>