

Georges
by mirvac
Cove
RESIDENCES





YOUR JOURNEY
STARTS HERE

MIRVAC ACKNOWLEDGES THE DARUG AND THARAWAL
ABORIGINAL PEOPLE AS THE TRADITIONAL OWNERS
OF THE LAND ON WHICH WE ARE DEVELOPING THIS SITE.
WE PAY OUR RESPECT TO THE ELDERS PAST AND PRESENT.

THE VISION

HIDDEN BEHIND A CURTAIN OF BUSHLAND,
ALONGSIDE THE CALMING EDDIES OF THE
GEORGES RIVER, MIRVAC IS CREATING AN IDYLLIC
NEW COMMUNITY WHERE FAMILIES CAN THRIVE
AND GROW, IN BEAUTIFULLY DESIGNED HOMES,
EMBRACED BY NATURE AND CONNECTED TO THE
FUTURE-FOCUSED CITY OF LIVERPOOL.





Georges
by mirvac
Cove
RESIDENCES

FROM ITS LOCATION ALONGSIDE THE GEORGES RIVER, GEORGES COVE RESIDENCES IS JUST SIX KILOMETRES FROM THE CENTRE OF LIVERPOOL.

A thriving Liverpool CBD is set to benefit from the coming Western Sydney Airport and Sydney's increased focus on the west. Hospitals, schools, a university and college campus, retail and commercial businesses are already well-established with more exciting growth on the horizon.

PARRAMATTA CBD

SYDNEY CBD

PROPOSED MARINA

GEORGES RIVER

WARRUNGWURI RESERVE

LIVERPOOL CBD, WESTFIELD LIVERPOOL & LIVERPOOL HOSPITAL

M5 MOTORWAY

BRIGHTON LAKES BY MIRVAC

HOLSWORTHY TRAIN STATION

Locations referred to are approximate only and may not be an accurate representation of the reference upon completion of the development. Correct as at 25.8.20.
*Proposed marina is subject to council approval.

CLOSE TO HOME

WESTERN SYDNEY UNIVERSITY, LIVERPOOL CAMPUS



LIVERPOOL CBD



FRANKIE'S FOOD FACTORY, MILPERRA



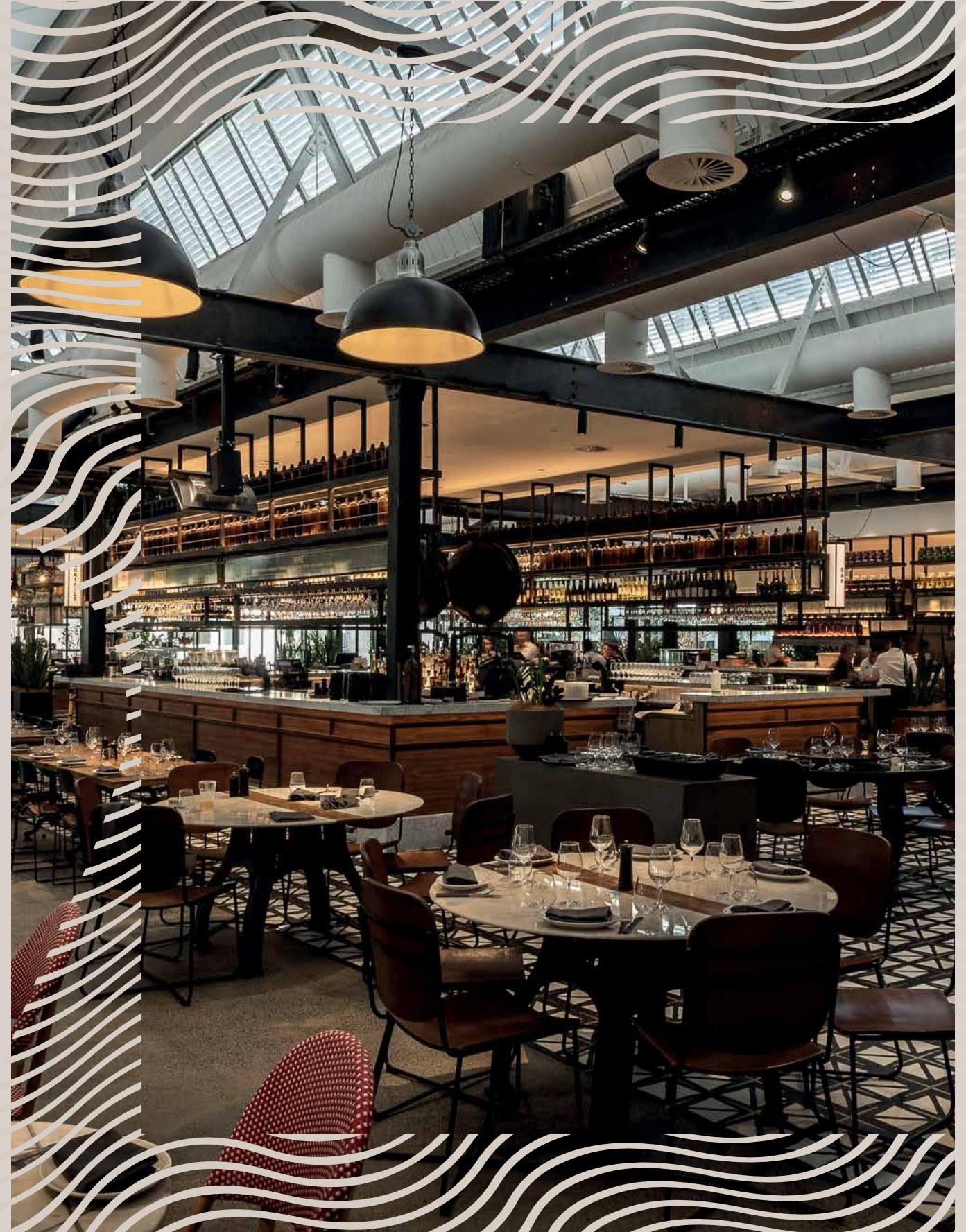
LIVERPOOL GROWERS & FOODIES MARKET



LOCALLY, MOOREBANK SHOPPING VILLAGE IS JUST TWO KILOMETRES AWAY WITH A MAJOR SUPERMARKET, SPECIALTY RETAILERS AND A MEDICAL CENTRE OFFERING EVERYDAY CONVENIENCE.

There are a number of public and private schools close by, local cafés and restaurants and in the buzzing centre of the Liverpool CBD, you will find every cuisine on a plate.

From your hideaway alongside the river, it is only minutes by car to the M5 and the major arterial roads that link to the Liverpool CBD and beyond. Bus services are within walking distance and Holsworthy train station, with more than 400 free commuter car spaces, is just three kilometres from home.



FIREPIT RESTAURANT, LIVERPOOL

Locations referred to are approximate only and may not be an accurate representation of the reference upon completion of the development. References to time are approximate only and are calculated by car. Correct as at 25.8.20.



NEAR THE BANKS OF THE GEORGES RIVER, GEORGES COVE RESIDENCES PRESENTS A NEW WAY TO EXPERIENCE URBAN LIVING, CLOSE TO NATURE AND THE ESSENTIALS OF FAMILY LIFE.

Here, you will enjoy the comfort of homes designed and built by Mirvac. Residents will enjoy the exclusive use of a Community Green with children's playground, open air gym, swimming pool and barbecue facilities. All located close to schools, shops and the thriving Liverpool CBD.

Let the river, walking paths, cycle and boardwalks become an extension of your own backyard, a playground for water sports – boating, water skiing, kayaking and fishing – or simply your own personal sanctuary of calm.*

A DAY BY THE WATER

BRIGHTON LAKES RECREATION AND GOLF CLUB, MOOREBANK



JUST AROUND THE NEXT BEND IN THE RIVER FROM GEORGES COVE RESIDENCES, DAVY ROBINSON RESERVE BOAT RAMP IS THE SPOT TO LAUNCH YOUR CRAFT OR TAKE ON PASSENGERS FOR A DAY ON THE WATER.

Upriver and accessible by car or boat, you will find Sydney's hidden gem, Chipping Norton Lakes, a picturesque patchwork of waterways and islands, parks, cycleways and bird reserves, perfect for picnics and boating, or just whiling away the hours.

For social and sporting pleasures, try Brighton Lakes Recreation and Golf Club. Enjoy 18 holes of golf on one of Sydney's prettiest courses, with tree-shaded fairways and holes that take you right down to the water's edge.

Or if swinging a golf club is not your style, the newly completed clubhouse offers relaxed bistro dining overlooking the course as well as a children's playground.



GEORGES RIVER, MOOREBANK

A scenic landscape featuring a large, mature tree on the right side, a body of water in the foreground, a golf course in the middle ground, and a swan standing on rocks in the lower right. The scene is captured during the golden hour, with warm light reflecting off the water. The image is framed by a decorative border of wavy lines on the left and top.

PARADISE
REDEFINED

TOTAL LIFESTYLE PACKAGE

LIVING AT GEORGES COVE RESIDENCES
YOU WILL ENJOY MORE THAN A BEAUTIFULLY
DESIGNED AND CRAFTED HOME; IT IS THE
TOTAL LIFESTYLE PACKAGE.

The ultimate summer indulgence is your very own swimming pool set within the Community Green with barbecue facilities, covered picnic tables and a playground and kickaround area. Outdoor gym facilities transform the Green into a fresh air fitness centre for residents of all ages. It is the social heart of the community, a place where special memories of childhood will be made and the seeds of lifelong friendship are planted.

Tree-lined streets lead you from the Community Green toward the landscaped pocket park inviting you to stop, sit a while and drink in the fresh air and magnificent view.



ARTIST'S IMPRESSION

QUALITY DESIGNED HOMES

TO LIVE IN A MIRVAC HOME IS TO EXPERIENCE THE DIFFERENCE THAT GOOD DESIGN CAN MAKE TO LIVEABILITY, ENHANCING YOUR FEELINGS OF WELLBEING AND HAPPINESS.

Intelligently designed living rooms, oriented to maximise light and warmth when it is wanted, shade and cool when it is not. Floorplans that fit the furniture that every family needs. Kitchens that are as functional and durable as they are beautiful. Indoor spaces that blend with the outdoors. All constructed from materials and finishes that have been tested before inclusion in your Mirvac Ready Home.

At Georges Cove Residences each home has been designed in response to its location, aspect and view. The look is contemporary, articulated and refined with subtle references to the landscape; a hint of coastal cool and timber notes that lend warmth and substance.



ARTIST'S IMPRESSION

Artist's impression was produced prior to planning approval, statutory approval and commencement of construction and is subject to change. The information, image and artist's impression depicting interiors, exteriors and landscaping are intended only as a guide and are not to be relied on as a representative of the final product. Furnishings not included. Upgrade options shown.



ARTIST'S IMPRESSION



ARTIST'S IMPRESSION

THE TERRACE HOME IS REIMAGINED FOR THE MODERN FAMILY, WITH A TRANSPARENCY THAT BLURS THE DISTINCTION BETWEEN INSIDE AND OUT.

Courtyards feature a timber battened pergola, bringing the outdoors in, celebrating the nexus between nature and nurture.

Free-standing homes, duplexes and terraces are designed to be flexible, many with generously proportioned living areas complemented by a downstairs office, separate living area or media room suitable for various uses or the multi-generational family.

Artist's impression was produced prior to planning approval, statutory approval and commencement of construction and is subject to change. The information, image and artist's impression depicting interiors are intended only as a guide and are not to be relied on as a representation of the final product. Furnishings not included. Upgrade options shown.



THE SECRET TO COMFORT



GOOD DESIGN IS ABOUT PUTTING PEOPLE FIRST, THINKING ABOUT THE WAY THEY LIVE AND DESIGNING A HOME FROM THE INSIDE OUT.

For over 48 years Mirvac has been creating exceptional living experiences through the pursuit of quality and care in every little detail. We listen to our customers and we learn, constantly innovating and finding new ways to design and build better designs.

Urban sophistication meets relaxed coastal chic with colour palettes inspired by the shore and the coast. Beautifully appointed kitchens integrate easily with home furnishings. Modern, yet timeless and designed to be the natural heart of the home.

The bathroom becomes a sanctuary of calm seclusion, with floor to ceiling tiles lending a clean, modern edge that is both pleasing and practical. Sanitaryware and tapware reflect the latest design trends, with their appealing aesthetic matched by durability.



GREEN AND CLEAN



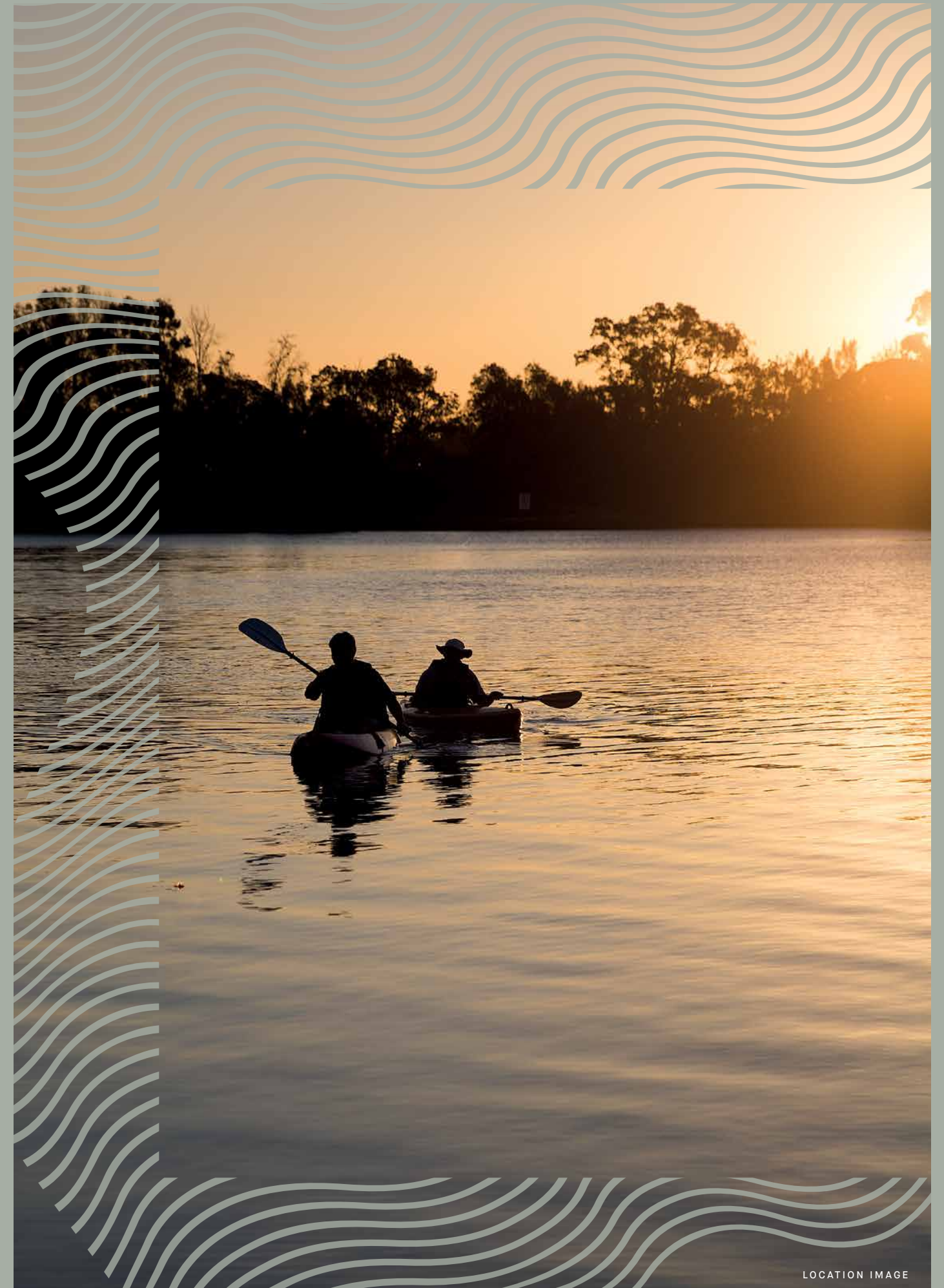
WITH THE ADDITION OF OUR CLEAN ENERGY SYSTEM AS AN OPTIONAL UPGRADE, YOU WILL BE ABLE TO MONITOR USAGE TO MAKE FURTHER SAVINGS, POTENTIALLY REDUCING YOUR ELECTRICITY BILL BY UP TO 80%.

The Clean Energy System upgrade package includes installation of a rooftop solar photovoltaic (PV) system and home battery technology, meaning your future power bills could be a fraction of those relying on the grid alone.

With a Clean Energy System, you will be able to live comfortably within your home knowing that if you need to use extra energy on hot or cold days, it is being covered by the sun. We have tested and monitored our Clean Energy System at our award-winning community Brighton Lakes, but Mirvac is no newcomer to harnessing the power of the sun.

Our environmentally advanced Newington community, created originally for the 2000 Sydney Olympic Games Athletes Village, was once the largest solar-powered residential suburb in the world.

To make it easier to keep your power usage in check, low energy LED lighting and appliances are included in every home, letting you count the savings.



LOCATION IMAGE



BRIGHTON LAKES COMMUNITY GREEN



GOOGONG, NSW



BRIGHTON LAKES, MOOREBANK



MY IDEAL HOUSE, GLEDSDOOD HILLS

Quality and care in every little detail

THE MIRVAC DIFFERENCE



For over 50 years we have been reimagining urban life in Australia - creating exceptional living experiences through the pursuit of quality and care in every little detail.

AWARD WINNING EXCELLENCE SINCE 1972, WITH OVER 800 PROJECT AND INDUSTRY AWARDS.



NATIONAL UDIA - 2019
Best Residential Development
.....
Brighton Lakes
Moorebank, NSW



EXCELLENCE AWARD - 2019
Masterplanned Community Development
.....
Brighton Lakes
Moorebank, NSW



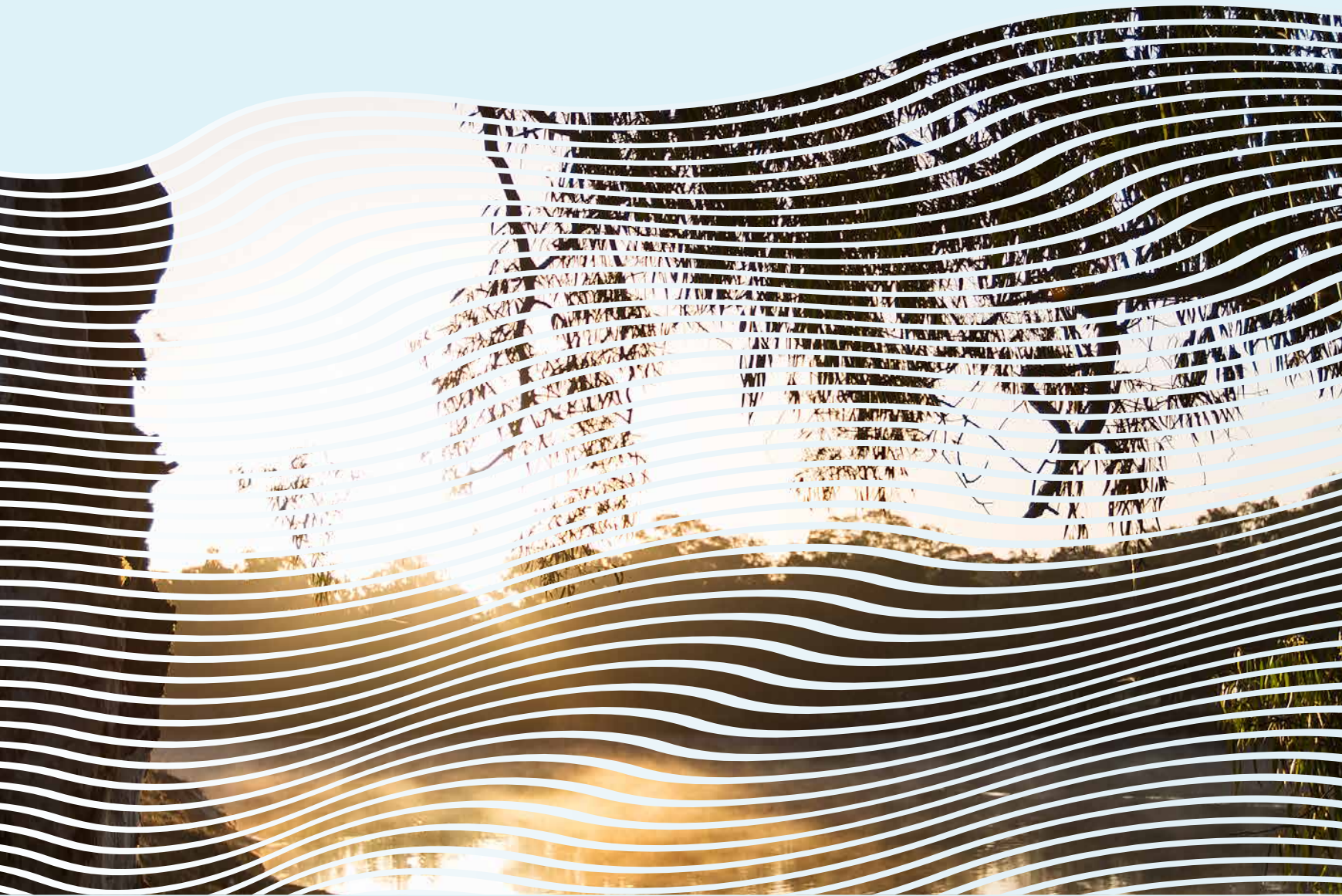
AIA - 2019
Sustainable Architecture
.....
My Ideal House
Gledswood Hills, NSW



PROPERTY COUNCIL - 2020
ACT Development of the Year
.....
Googong
NSW

It's in the detail.





The content of this brochure was produced prior to completion, and prior to the receipt of final planning approvals. Photographs, diagrams and artist's impressions depicting interiors, exteriors and indicative views are a guide only. The information provided in this brochure, including those images, is believed to be correct at the time of printing but will change as the development and planning approvals proceed. Changes will also be made during the development of the project and specifications, details and fittings may be changed without notice. Purchasers must rely on their own continuing enquiries. To the extent permitted by law, this brochure is not an offer or a contract. Mirvac expressly excludes any and all liability relating to, or resulting from, the use of or reliance on, any information contained in this brochure by any person. The information provided herein is believed to be correct as at 25.8.20 V1.