

Your Landscaping  
Package Options

MARCH 2022. V2.

OLIVINE by mirvac

RETREAT

TO

EVERYDAY

EXCELLENCE



## Landscape Process

### 1 REVIEW THE PACKAGES

Review Olivine's range of front lot landscaping packages included in this brochure and choose your preferred design

### 2 COMPLETE THE FORM

Complete the Landscape Request Form included in the Design Guidelines and email to [viccustomer@mirvac.com](mailto:viccustomer@mirvac.com)

### 3 CONSTRUCT YOUR HOME

Whilst your new home is under construction, ensure all works are complete highlighted in Olivine's Landscape Request Form

### 4 EMAIL YOUR INFORMATION

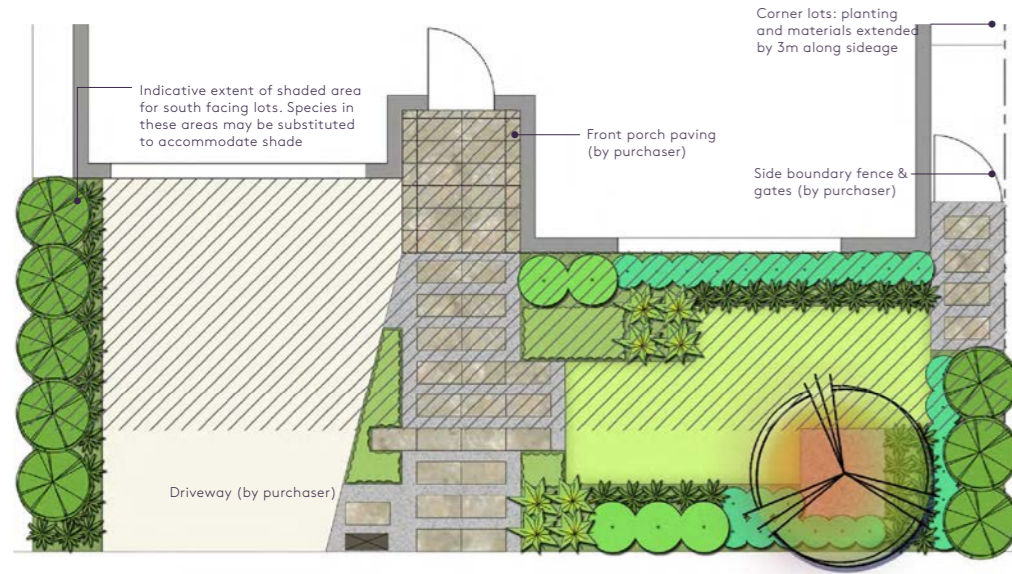
Email your name, lot & Certificate of Occupancy to [viccustomer@mirvac.com](mailto:viccustomer@mirvac.com)

### 5 MIRVAC WILL CONTACT YOU

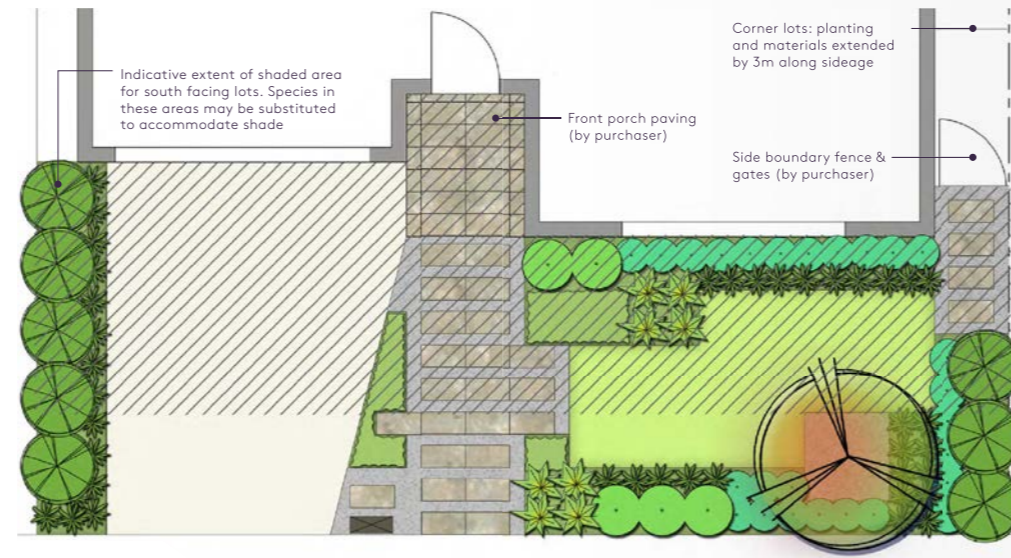
Mirvac will contact you to commence work on your new front garden within 3 months\*

# Modern Garden Design

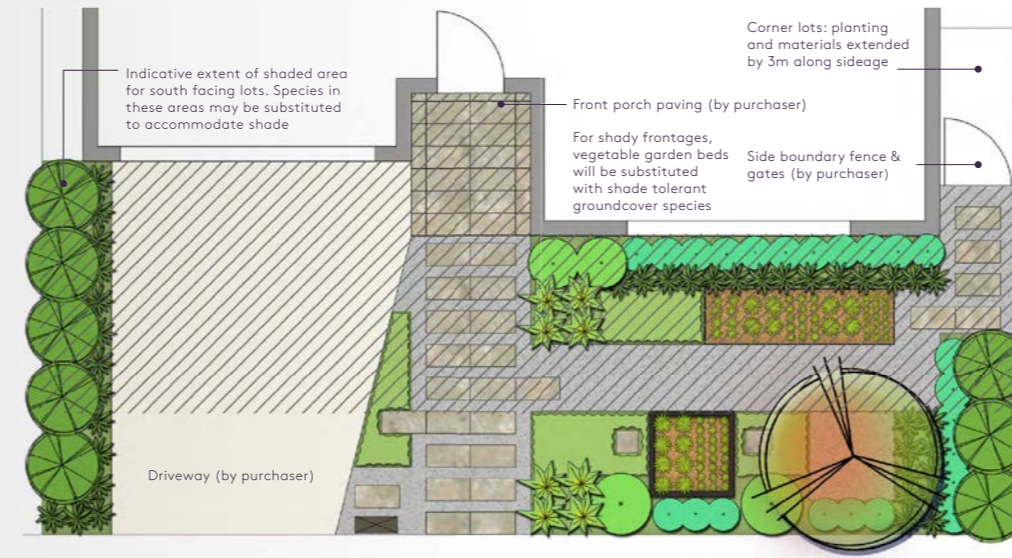
## Warm Colour Palette



## Cool Colour Palette



## Edible Palette



- |   |  |   |
|---|--|---|
| <p><b>Tree</b><br/>*Vintage Red Sugar Gum<br/><i>Eucalyptus cladocalyx</i><br/>"Vintage Red"</p> <p><b>Large Shrub</b><br/>Slim Bottlebrush<br/><i>Callistemon viminalis</i><br/>"Slim"</p> <p><b>Medium Shrub</b><br/>*Devil's Blush<br/><i>Leucadendron salignum</i><br/>"Devil's Blush"</p> <p><b>Small Shrub</b><br/>*Wood Spurge<br/><i>Euphorbia amygdaloides</i><br/>"Craigieburn"</p> <p><b>Tufting Plants</b><br/>*Mondo Grass<br/><i>Ophiopogon japonicus</i></p> | <p><b>Accent Plants</b><br/>*Gynea Lily<br/><i>Doryanthes excelsa</i></p> <p><b>Groundcover</b><br/>*Autumn Blaze Correa<br/><i>Correa pulchella</i><br/>"Autumn Blaze"</p> <p><b>Tree</b><br/>Tuscarora Crepe Myrtle<br/><i>Lagerstroemia indica</i><br/>"Tuscarora"</p> <p><b>Large Shrub</b><br/>*Lilly Pilly Hot Flush<br/><i>Acmena smithii</i><br/>"Hot Flush"</p> <p><b>Medium Shrub</b><br/>Peaches and Cream Grevillea<br/><i>Grevillea "Peaches and Cream"</i></p> | <p><b>Small Shrub</b><br/>*Twiggy Dwarf Baeckea<br/><i>Baeckea virgata dwarf</i></p> <p><b>Tufting Plants</b><br/>*Mat Rush<br/><i>Lomandra longifolia</i><br/>"Tanika"</p> <p><b>Accent Plants</b><br/>Peco Cordyline<br/><i>Cordyline australis "Peco"</i></p> <p><b>Groundcover</b><br/>Autumn Joy Stonecrop<br/><i>Sedum "Autumn Joy"</i></p> |
|---|--|---|

- |  |   |   |
|--|---|---|
| <p><b>Tree</b><br/>*Little Gem Magnolia<br/><i>Magnolia grandiflora</i><br/>"Little Gem"</p> <p><b>Large Shrub</b><br/>Escallonia<br/><i>Escallonia "Iveyi"</i></p> <p><b>Medium Shrub</b><br/>*Green Mist River Wattle<br/><i>Acacia cognata</i><br/>"Green Mist"</p> <p><b>Small Shrub</b><br/>Silver Waves Pig's Ear<br/><i>Cotyledon orbiculata</i><br/>"Silver Waves"</p> <p><b>Tufting Plants</b><br/>Blue Fox Fescue<br/><i>Festuca glauca</i><br/>"Blue Fox"</p> | <p><b>Accent Plants</b><br/>*Matapouri Bay Renga Lily<br/><i>Arthropodium cirratum</i><br/>"Matapouri Bay"</p> <p><b>Groundcover</b><br/>*Broad-leaf Creeping Boobialla<br/><i>Myoporum parvifolium</i><br/>"Broad Leaf Form"</p> <p><b>Tree</b><br/>Kanooka<br/><i>Tristaniaopsis laurina</i><br/>"Luscious"</p> <p><b>Large Shrub</b><br/>*Dense Fence Viburnum<br/><i>Viburnum odoratissimum</i><br/>"Dense Fence"</p> <p><b>Medium Shrub</b><br/>*Evergreen Spindle Tree<br/><i>Euonymus japonicus</i><br/>"Green Rocket"</p> | <p><b>Small Shrub</b><br/>*Rock Correa<br/><i>Correa glabra "Ivory Lanterns"</i></p> <p><b>Tufting Plants</b><br/>*Silver Streak Flax Lily<br/><i>Dianella "Silver Streak"</i></p> <p><b>Accent Plants</b><br/>Adam's Needle<br/><i>Yucca filamentosa</i></p> <p><b>Groundcover</b><br/>Shore Juniper<br/><i>Juniperus conferta</i></p> |
|--|---|---|

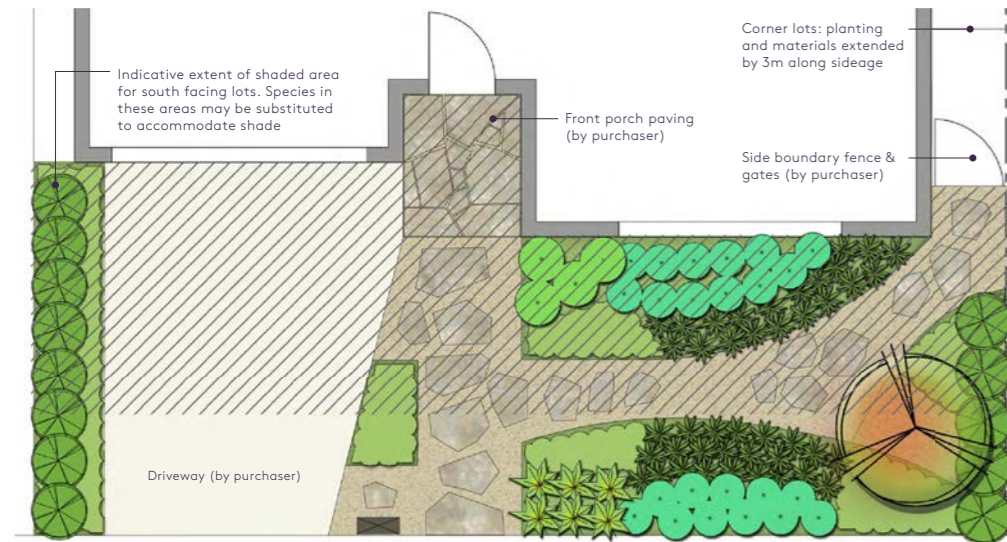
- |   |   |  |
|---|---|--|
| <p><b>Tree</b><br/>Quince<br/><i>Cydonia oblonga</i></p> <p><b>Large Shrub</b><br/>Ballerina Apple Tree<br/><i>Malus domestica</i><br/>"Ballerina"</p> <p><b>Medium Shrub</b><br/>Lime Sublime<br/><i>Citrus aurantifolia</i><br/>"Sublime"</p> <p><b>Small Shrub</b><br/>Perennial Capsicum<br/><i>Capsicum annuum</i><br/>var. <i>annuum "Perennial"</i></p> <p><b>Tufting Plants</b><br/>Garlic Chives<br/><i>Allium tuberosum</i></p> | <p><b>Accent Plants</b><br/>*Dwarf Cardamom<br/><i>Alpinia nutans</i></p> <p><b>Groundcover</b><br/>Baby Sun Rose<br/><i>Aptenia cordifolia</i></p> <p><b>Tree</b><br/>*Bay Tree<br/><i>Laurus nobilis "Standard"</i></p> <p><b>Large Shrub</b><br/>Kumquat<br/><i>Fortunella japonica</i></p> <p><b>Medium Shrub</b><br/>*Gooseberry<br/><i>Ribes uva-crispa</i></p> | <p><b>Small Shrub</b><br/>African Blue Basil (Perennial)<br/><i>Ocimum basilicum</i><br/>"African Blue"</p> <p><b>Tufting Plants</b><br/>Lemongrass<br/><i>Cymbopogon citratus</i></p> <p><b>Accent Plants</b><br/>Red Sorrel<br/><i>Rumex sanguineus</i></p> <p><b>Groundcover</b><br/>*Vietnamese coriander/mint<br/><i>Persicaria odorata</i></p> |
|---|---|--|

- Front garden tree
- Large shrubs
- Medium shrubs
- Small shrubs
- Tufting plants
- Accent plants
- Vegetable garden bed (planting by purchaser)
- Wicking garden bed/Food Cube (planting by purchaser)
- Indicative shaded area of south facing lots
- Groundcover plants
- Steppers
- Gravel
- Front porch paving (by purchaser)
- Side boundary fence & gates (by purchaser)
- Driveway (by purchaser)
- Letter box (by purchaser)

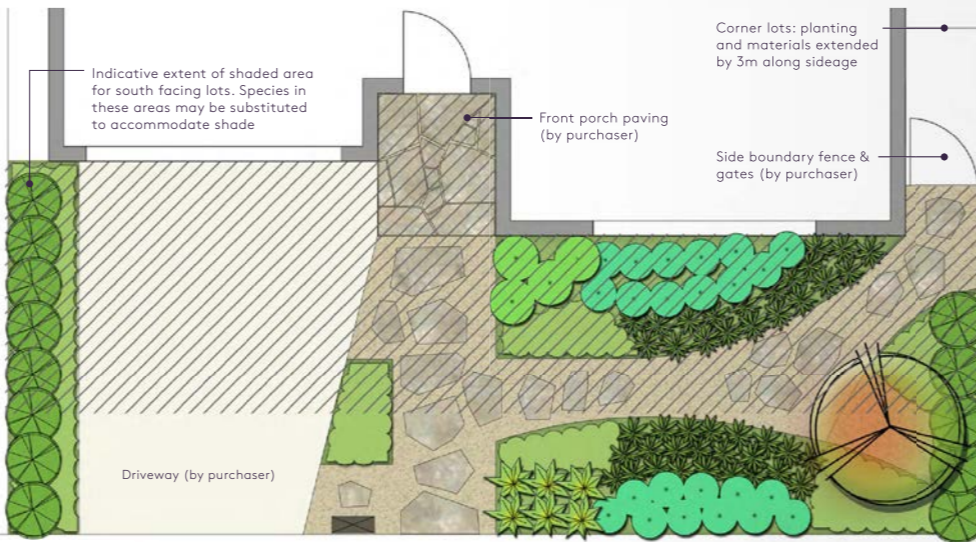
- Note:**
- The species shown here are indicative only of the plants that may be provided. Mirvac reserves the right to substitute species that will fulfil the same functional design.
  - \* Plants suitable for shady or semi-shady areas.
  - All garden and lawn areas shown are irrigated.
  - Layouts may be amended to suit individual lot widths to accommodate existing services, if agreed by Mirvac.
  - Any retaining walls that may be required are not included in the landscaping package and are to be installed prior to landscaping works commencing.
  - A path from your front door to the residential footpath must be level prior to the front garden installation. The path must be level (in a condition where there are no slip or trip hazards) for the team to install the front garden.

# Contemporary Garden Design

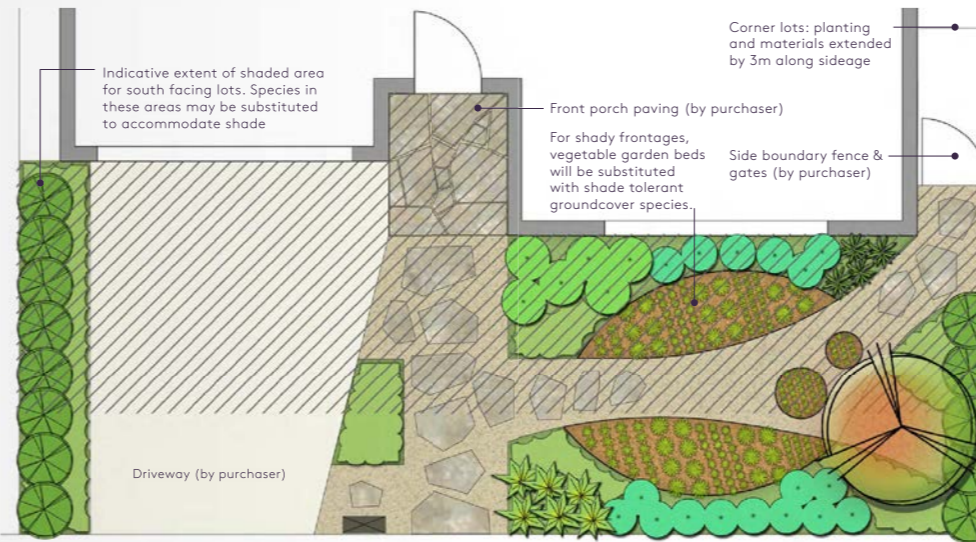
## Warm Colour Palette



## Cool Colour Palette



## Edible Palette



- |  |  |  |
|--|--|--|
| <p><b>Tree</b><br/>*Euky Dwarf Yellow Gum<br/><i>Eucalyptus leucoxylon</i><br/>*Euky Dwarf</p> | <p><b>Accent Plants</b><br/>Southern Cross PBR Aloe<br/>Aloe *Southern Cross* PBR</p>                | <p><b>Small Shrub</b><br/>Cherry Cluster<br/><i>Grevillea rhyolitica x juniperina</i></p>                  |
| <p><b>Large Shrub</b><br/>*Gold Dust Wattle<br/><i>Acacia acinacea</i></p>                     | <p><b>Groundcover</b><br/>Common Everlasting<br/><i>Chrysocephalum apiculatum</i></p>                | <p><b>Tufting Plants</b><br/>Rubrum Fountain Grass<br/><i>Pennisetum advena</i><br/>*Rubrum* (Sterile)</p> |
| <p><b>Medium Shrub</b><br/>Inca Gold Cone Flower<br/><i>Leucadendron</i><br/>*Inca Gold</p>    | <p><b>Tree</b><br/>Lemon Scented Gum<br/><i>Corymbia citriodora</i><br/>*Scentuous</p>               | <p><b>Accent Plants</b><br/>Bush Revolution Kangaroo Paw<br/><i>Anigozanthos</i> *Bush Revolution*</p>     |
| <p><b>Small Shrub</b><br/>*Fire Bells Correa<br/><i>Correa pulchella</i><br/>*Fire Bells</p>   | <p><b>Large Shrub</b><br/>Banksia Giant Candles<br/><i>Banksia ericifolia</i><br/>*Giant Candles</p> | <p><b>Groundcover</b><br/>*Kidney Weed<br/><i>Dichondra repens</i></p>                                     |
| <p><b>Tufting Plants</b><br/>*New Zealand Iris<br/><i>Libertia peregrinans</i></p>             | <p><b>Medium Shrub</b><br/>*River Cascade Wattle<br/><i>Acacia cognata</i><br/>*River Cascade</p>    |  |

- |  |   |  |
|--|---|--|
| <p><b>Tree</b><br/>Silver Princess<br/><i>Eucalyptus caesia</i><br/>*Silver Princess</p>           | <p><b>Accent Plants</b><br/>White Tiger Dietes<br/><i>Dietes iridioides</i><br/>*White Tiger</p>                        | <p><b>Small Shrub</b><br/>*Digger's Speedwell<br/><i>Derwentia perfoliata</i></p>                      |
| <p><b>Large Shrub</b><br/>Green Screen Lilly Pilly<br/><i>Acmena smithii</i><br/>*Green Screen</p> | <p><b>Groundcover</b><br/>*Purple Bugle<br/><i>Ajuga reptans</i><br/>*Atrapurplea</p>                                   | <p><b>Tufting Plants</b><br/>Mingo Kangaroo Grass<br/><i>Themeda triandra</i> *Mingo*</p>              |
| <p><b>Medium Shrub</b><br/>*White Correa<br/><i>Correa alba</i></p>                                | <p><b>Tree</b><br/>*Lemon &amp; Lime Willow Peppermint<br/><i>Agonis flexuosa</i> *Lemon &amp; Lime*<br/>*Scentuous</p> | <p><b>Accent Plants</b><br/>Silver Spears Astelia<br/><i>Astelia chathamica</i><br/>*Silver Spears</p> |
| <p><b>Small Shrub</b><br/>*Prostate Native Rosemary<br/><i>Westringia fruticosa</i><br/>*Mundi</p> | <p><b>Large Shrub</b><br/>*Rock Correa<br/><i>Correa glabra</i></p>   | <p><b>Groundcover</b><br/>Emu Bush Cultivar<br/><i>Eremophila glabra</i><br/>*Kalbarri Carpet</p>      |
| <p><b>Tufting Plants</b><br/>*Blue Poa<br/><i>Poa labillardieri</i><br/>*Suggan Buggan</p>         | <p><b>Medium Shrub</b><br/>Misty Native Hibiscus<br/><i>Alyogyne huegelii</i> *Misty*</p>                               |  |

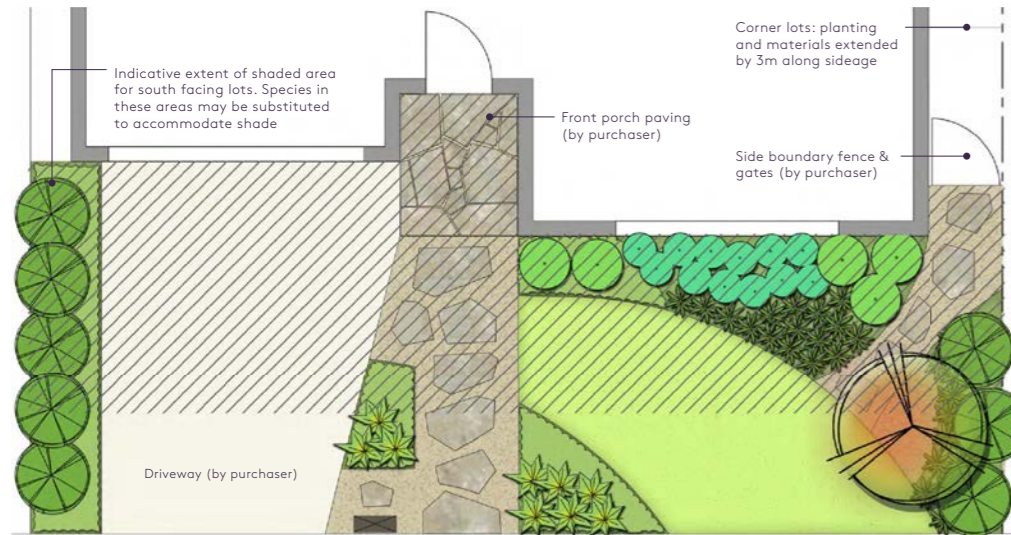
- |  |   |  |
|--|---|--|
| <p><b>Tree</b><br/>Pineapple Guava<br/><i>Feijoa sellowiana</i></p>                                | <p><b>Accent Plants</b><br/>Winter Lace Lavender<br/><i>Lavandula</i> *Winter Lace*</p> | <p><b>Small Shrub</b><br/>Common Sage<br/><i>Salvia officinalis</i></p>                                  |
| <p><b>Large Shrub</b><br/>Pomegranate<br/><i>Punica granatum</i></p>                               | <p><b>Groundcover</b><br/>*Lemon Balm<br/><i>Melissa officinalis</i></p>                | <p><b>Tufting Plants</b><br/>Lemongrass<br/><i>Cymbopogon flexuosus</i></p>                              |
| <p><b>Medium Shrub</b><br/>*Blue Rose Blueberry<br/><i>Vaccinium corymbosum</i><br/>*Blue Rose</p> | <p><b>Tree</b><br/>European Olive<br/><i>Olea europaea subsp. europaea</i></p>          | <p><b>Accent Plants</b><br/>Blue Lagoon Rosemary<br/><i>Rosmarinus officinalis</i><br/>*Blue Lagoon*</p> |
| <p><b>Small Shrub</b><br/>*Baby Bay Bay Tree<br/><i>Laurus nobilis</i><br/>*Baby Bay</p>           | <p><b>Large Shrub</b><br/>Kaffir Lime<br/><i>Citrus hystrix</i></p>                     | <p><b>Groundcover</b><br/>Greek Oregano<br/><i>Origanum vulgare hirtum</i></p>                           |
| <p><b>Tufting Plants</b><br/>Society Garlic<br/><i>Tulbaghia violacea</i></p>                      | <p><b>Medium Shrub</b><br/>Lemon Verbena<br/><i>Aloysia citrodora</i></p>               |  |

- Front garden tree
- Large shrubs
- Medium shrubs
- Small shrubs
- Tufting plants
- Accent plants
- Vegetable garden bed (planting by purchaser)
- Wicking garden bed/Food Cube (planting by purchaser)
- Indicative shaded area of south facing lots
- Groundcover plants
- Steppers
- Gravel
- Front porch paving (by purchaser)
- Side boundary fence & gates (by purchaser)
- Driveway (by purchaser)
- Letter box (by purchaser)

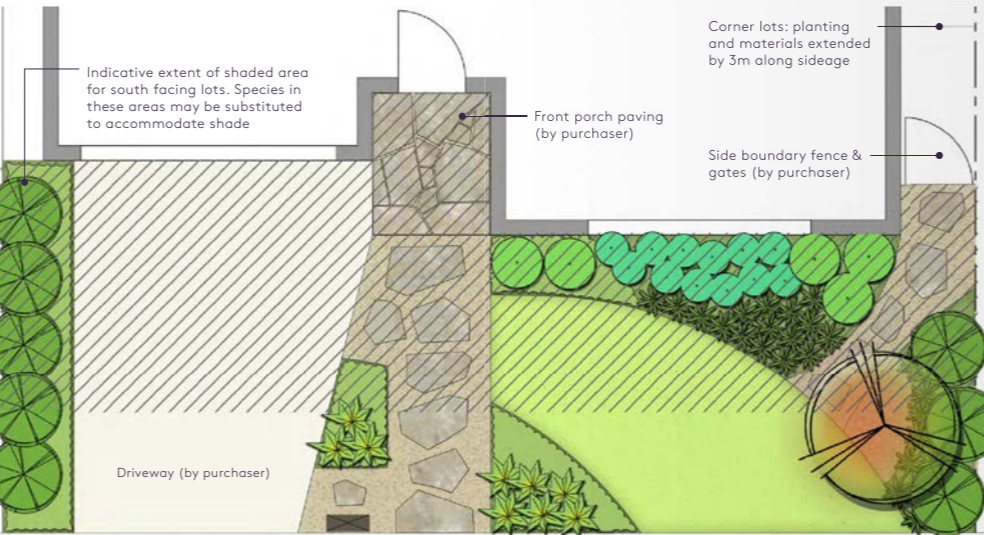
- Note:**
- The species shown here are indicative only of the plants that may be provided. Mirvac reserves the right to substitute species that will fulfill the same functional design.
  - \* Plants suitable for shady or semi-shady areas.
  - All garden and lawn areas shown are irrigated.
  - Layouts may be amended to suit individual lot widths to accommodate existing services, if agreed by Mirvac.
  - Any retaining walls that may be required are not included in the landscaping package and are to be installed prior to landscaping works commencing.
  - A path from your front door to the residential footpath must be level prior to the front garden installation. The path must be level (in a condition where there are no slip or trip hazards) for the team to install the front garden.

# Classic Garden Design

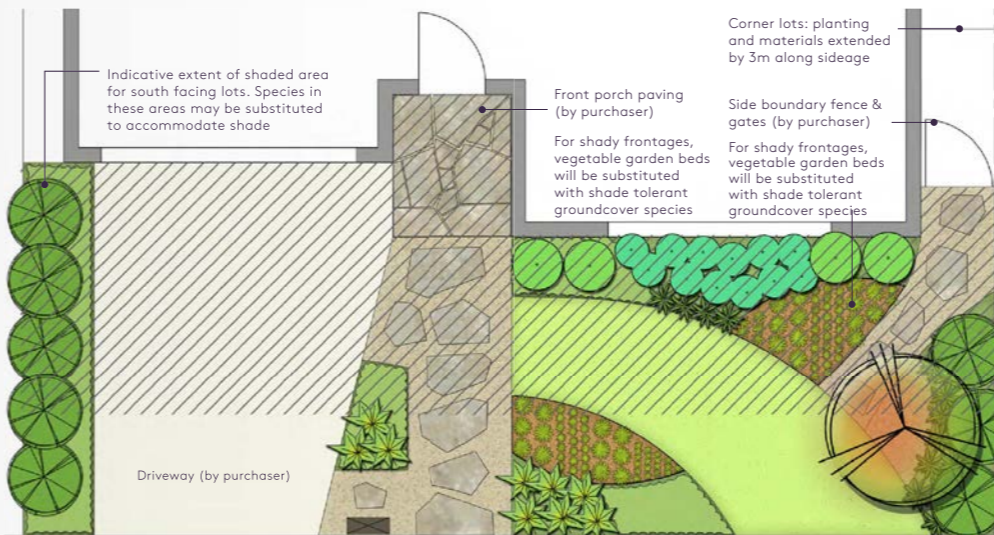
## Warm Colour Palette



## Cool Colour Palette



## Edible Palette



- |  |  |  |
|--|--|--|
| <p><b>Tree</b><br/>*Judas Tree<br/><i>Cercis canadensis</i><br/>'Forest Pansy'</p>                         | <p><b>Accent Plants</b><br/>Golden Everlasting<br/><i>Xerochrysum bracteatum</i></p>                         | <p><b>Small Shrub</b><br/>Bonnie Prince Charlie Grevillea<br/><i>Grevillea 'Bonnie Prince Charlie'</i></p> |
| <p><b>Large Shrub</b><br/>*Laurustinus<br/><i>Viburnum tinus</i></p>                                       | <p><b>Groundcover</b><br/>*Orange Glow Correa<br/><i>Correa pulchella</i><br/>'Orange Glow'</p>              | <p><b>Tufting Plants</b><br/>Blaze Red Hot Poker<br/><i>Kniphofia 'Blaze'</i></p>                          |
| <p><b>Medium Shrub</b><br/>*Aussie Boomer Lilly Pilly<br/><i>Syzygium australe</i><br/>'Aussie Boomer'</p> | <p><b>Tree</b><br/>Chinese Magnolia Tree<br/><i>Michelia doltsopa</i></p>                                    | <p><b>Accent Plants</b><br/>Bird of Paradise<br/><i>Strelitzia reginae</i></p>                             |
| <p><b>Small Shrub</b><br/>*Moon Bay Heavenly Bamboo<br/><i>Nandina domestica</i><br/>'Moon Bay'</p>        | <p><b>Large Shrub</b><br/>Green Pillar Pittosporum<br/><i>Pittosporum tenuifolium</i><br/>'Green Pillar'</p> | <p><b>Groundcover</b><br/>Silverdust Glow African Daisy<br/><i>Arctotis 'Silverdust Glow'</i></p>          |
| <p><b>Tufting Plants</b><br/>*Tasred Flax Lily<br/><i>Dianella tasmanica</i><br/>'Tasred'</p>              | <p><b>Medium Shrub</b><br/>Superb Grevillea<br/><i>Grevillea 'Superb'</i></p>                                |  |

- |  |  |   |
|--|--|---|
| <p><b>Tree</b><br/>Natchez Crepe Myrtle<br/><i>Lagerstroemia indica x L. fauriei</i><br/>'Natchez'</p> | <p><b>Accent Plants</b><br/>Pride of Madeira<br/><i>Echium candicans</i></p>           | <p><b>Small Shrub</b><br/>Snow Maiden Indian Hawthorn<br/><i>Raphiolepis indica</i><br/>'Snow Maiden'</p> |
| <p><b>Large Shrub</b><br/>*Oak-leaved Hydrangea<br/><i>Hydrangea quercifolia</i></p>                   | <p><b>Groundcover</b><br/>Ground Morning Glory<br/><i>Convolvulus mauritanicus</i></p> | <p><b>Tufting Plants</b><br/>*Little Jess Flax Lily<br/><i>Dianella caerulea</i><br/>'Little Jess'</p>    |
| <p><b>Medium Shrub</b><br/>*Coliban River Correa<br/><i>Correa glabra</i><br/>'Coliban River'</p>      | <p><b>Tree</b><br/>Callery Pear<br/><i>Pyrus calleryana</i><br/>'Capital'</p>          | <p><b>Accent Plants</b><br/>*Wild Iris<br/><i>Diets grandiflora</i></p>                                   |
| <p><b>Small Shrub</b><br/>*Box Holly<br/><i>Ruscus hypoglossum</i></p>                                 | <p><b>Large Shrub</b><br/>Mexican Orange Blossom<br/><i>Choisya ternata</i></p>        | <p><b>Groundcover</b><br/>*Prostrate Native Rosemary<br/><i>Westringia fruticosa</i><br/>'Mundi'</p>      |
| <p><b>Tufting Plants</b><br/>Morning Flag<br/><i>Orthocenthus multiflorus</i></p>                      | <p><b>Medium Shrub</b><br/>Gum Rockrose<br/><i>Cistus ladanifer</i></p>                |   |

- |  |  |   |
|--|--|---|
| <p><b>Tree</b><br/>Lemon Tree<br/><i>Citrus limon</i><br/>'Lisbon Lemon'</p>                           | <p><b>Accent Plants</b><br/>English Lavender<br/><i>Lavandula angustifolia</i></p> | <p><b>Small Shrub</b><br/>*Dwarf Cardamom<br/><i>Alpinia nutans</i></p>                     |
| <p><b>Large Shrub</b><br/>Dwarf Hedging Olive<br/><i>Olea europaea</i><br/>'Bambalina'</p>             | <p><b>Groundcover</b><br/>Winter Savory<br/><i>Satureja montana</i></p>            | <p><b>Tufting Plants</b><br/>Tasmanian Flax-lily<br/><i>Dianella tasmanica</i></p>          |
| <p><b>Medium Shrub</b><br/>Dwarf Mandarin Emperor<br/><i>Citrus reticulata</i><br/>'Emperor Dwarf'</p> | <p><b>Tree</b><br/>Almond<br/><i>Prunus dulcis</i></p>                             | <p><b>Accent Plants</b><br/>*Standard Bay Tree<br/><i>Laurus nobilis</i><br/>'Standard'</p> |
| <p><b>Small Shrub</b><br/>Purple Sage<br/><i>Salvia officinalis</i><br/>'Purpurea'</p>                 | <p><b>Large Shrub</b><br/>*Strawberry Guava Tree<br/><i>Psidium littorale</i></p>  | <p><b>Groundcover</b><br/>*Peppermint<br/><i>Mentha x piperita</i></p>                      |
| <p><b>Tufting Plants</b><br/>Chives<br/><i>Allium schoenoprasum</i></p>                                | <p><b>Medium Shrub</b><br/>*Rhubarb<br/><i>Rheum rhabarbarum</i></p>               |   |

- Front garden tree
- Large shrubs
- Medium shrubs
- Small shrubs
- Tufting plants
- Accent plants
- Vegetable garden bed (planting by purchaser)
- Wicking garden bed/Food Cube (planting by purchaser)
- Indicative shaded area of south facing lots
- Groundcover plants
- Steppers
- Gravel
- Front porch paving (by purchaser)
- Side boundary fence & gates (by purchaser)
- Driveway (by purchaser)
- Letter box (by purchaser)

- Note:**
- The species shown here are indicative only of the plants that may be provided. Mirvac reserves the right to substitute species that will fulfil the same functional design.
  - \* Plants suitable for shady or semi-shady areas.
  - All garden and lawn areas shown are irrigated.
  - Layouts may be amended to suit individual lot widths to accommodate existing services, if agreed by Mirvac.
  - Any retaining walls that may be required are not included in the landscaping package and are to be installed prior to landscaping works commencing.
  - A path from your front door to the residential footpath must be level prior to the front garden installation. The path must be level (in a condition where there are no slip or trip hazards) for the team to install the front garden.
  - Classic layout is depicted with crazy paving style however is also eligible with rectangular paving. If choosing the 'Classic' layout, please also nominate which paving you would like on the Covenant & Landscape Request Checklist.

# Landscape FAQ's

## Am I eligible for the landscape package?

All purchasers who have purchased within the Olivine estate are eligible for the landscape package inclusion - please refer to the terms and conditions of your contract.

## When do I apply for the landscape package?

You will need to complete the Landscape Request Form when you submit your Design Assessment Application Form. The application form can be found in the latest Olivine Design Guidelines at <https://portal.olivine.mirvac.com>.

## Do we need to provide our Certificate of Occupancy?

Yes, a copy your certificate of occupancy will need to be supplied prior to landscape works commencing. Mirvac's Review Panel will undertake an external inspection of your home to ensure your home has been built to the approved plans prior to landscape works commencing. In the event your dwelling has not been approved, rectification of non-compliance items will need to be completed prior to commencing landscape works.

## Am I allowed synthetic turf?

No, fake,artificial turf is not compliant with estate design guidelines.

## Can I extend my driveway?

No, the driveway width must match the existing crossover width at the front allotment boundary.

## Can we vary or change our landscape packages?

No, the packages cannot be varied. However, our new residents are most welcome to add their own touch to their front gardens after landscape works have been completed.

## When will Mirvac deliver my front garden?

Once Mirvac have confirmed that your home has been built to the approved plans, it is anticipated front gardens will commence works within 3 months. Timeframes will be subject to prevailing seasonal conditions and contractor availability.

## Can I choose to deliver my own front garden?

Yes, you can choose to deliver your own front landscaping when you submit your Design Assessment Application Form. Your builder/architect will need to provide Landscape Plans as part of your Design Assessment application. Landscape works must be completed within 6 months of issue of a Certificate of Occupancy. Note that Mirvac will not provide a rebate if you decide to deliver your own front landscaping.

## Do I need a retaining wall?

Depending on the difference between the floor level of your home and the adjacent street a retaining wall may be required to create a level platform around your lot. If this is the case the location, height and materiality will need to be submitted to Olivine DRP for approval prior to installation and to be in accordance with the Design Guidelines.

Front gardens must be level at the time of compliance assessment ensuring there is no water runoff / discharge from the property onto your neighbours. If the grade / level is too steep then you will be required to prepare the site level prior to the front garden installation.

A path from your front door to the residential footpath must be level prior to the front garden installation. The path must be level (in a condition where there are no slip or trip hazards) for the team to install the front garden.

Please note that the Olivine Front Garden Package does not include the construction of a retaining wall and steps (if applicable, where the path from your front door to the residential footpath isn't leveled). If it is not installed, a best fit scenario will be achieved or works will have to be delayed until any level issues are resolved.

# Landscape Checklist

## Selected landscape design to be executed and submitted as part of this application.

I acknowledge the following works to be completed prior to handing over the front yard to Mirvac for landscaping:

- Driveway complete
- All required earthworks complete
- Retaining wall complete (if applicable) and in accordance with the Design Guidelines, sections 10.3 (If batter is to be used, it should not be more than 1:6 gradient - consult your builder or architect)
- Irrigation system installed (if applicable) - please provide constructed plans
- Landscape area leveled to 100mm below driveway level in preparation for top soil
- External water tap and adjacent external power supply installed as per Design Guidelines, sections 11.2.2
- All site rubbish removed
- Garage door installed
- Porch and footpaths complete
- Fencing installed
- Letterbox installed
- Drainage infrastructure installed (as required)
- NBN Co. street connection completed
- Clear access to area in which works will be undertaken

## \*Note - Retain a copy of the checklist for your reference to ensure all works are completed.

Please refer to selected landscape style design for a breakdown of requirements.

Signed (owner) \_\_\_\_\_ Signed (owner) \_\_\_\_\_  
Name \_\_\_\_\_ Name \_\_\_\_\_  
Date / /2022 Date / /2022



[OLIVINE.MIRVAC.COM](http://OLIVINE.MIRVAC.COM)

**Experience Centre**

995 Donnybrook Rd, Donnybrook, VIC, 3064

(Enter off Olivine Boulevard)

Open Monday 1pm - 5pm

Tuesday - Saturday 11am - 5pm

**Sales Team**

Shae Meagher - 0448 091 833

Emma Morrow - 0456 813 349

