

LOCALITY MAP

NOTES

- This drawing is to be read in conjunction with Calibre project drawings 17-003293.002.PED and Light Harmony Lighting Design documentation 8700E1RevP L1 for the construction of a new pedestrian bridge and Endeavour Energy Project URS21616 for the subdivision of adjacent land. All works shall comply with Endeavour Energy Network Standards, AS3000 and AS3008 as applicable.
- The lighting installation shall be in accordance with this design drawing and comprise the following works:
 - ASPL2 connection services including new 4c 16mm2 CU XLPE consumers mains termination and new metering;
 - Manage install of new metering and liaison with Wollondilly Shire Council to establish an electricity account to obtain a work order for meter installation;
 - Supply and installation of new Main Switchboard (MSB01) adjacent Endeavour pillar. Refer MSB notes and single line diagram;
 - Provide new MEN link & earth rod at new MSB;
 - Supply and installation of luminaires and columns as indicated in the legend. Column and installation arrangement TBC;
 - All luminaires to be fitted with a PE Cell;
 - Trenching and supply and installation of conduits with cable pull through cords and end capping between MSB, ramp and bridge. Conduit along bridge to be installed under ramp and bridge. Refer detail 1 and 2;
 - Provision of bedding sand around conduits, cable protective covers, backfilling;
 - Supply and installation and termination of all cabling from the new Main Switchboard to luminaires as shown;
- Allow to protect and make safe all outgoing circuits connected to the Main Switchboards including mechanical protection to prevent access to unauthorised personnel;
- Allow to remove all off cuts and general waste from site;
- Allow to coordinate installation in coordination with all other services;
- Allow for testing and certification of all completed works;
- Provide labeling of Main Switchboard using stainless steel labeling secured with galvanised rivets indicating name of distribution board, origin of supply and submain cable size;
- Provide labeling of all Street light assets using stainless steel labeling secured with galvanised rivets indicating asset number and origin of supply. Label all street light columns as 'PRIVATE';

POWER & COMMUNICATIONS LEGEND

MSB - MAIN SWITCH BOARD

ELECTRICAL CONDUIT

LIGHTING & SWITCHING LEGEND

20W AREA LIGHT
EQ: ADLT XSPW-B-WM-2ME-2L-40K-UL-BK-P

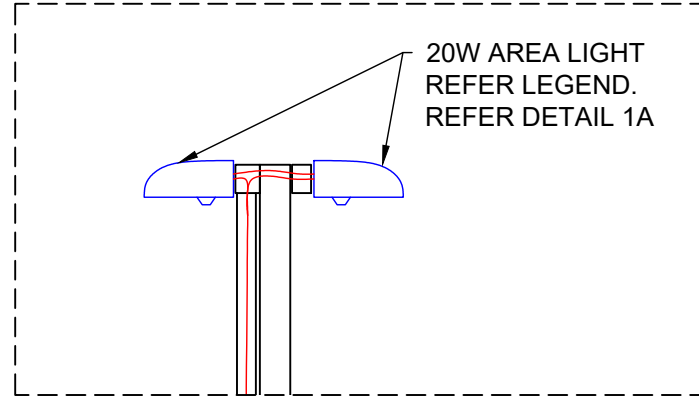
20W BULKHEAD LIGHT
EQ: ADLT KTEA-S-ABS-4L-407 C/W KT-KIT-MLT

ENDEAVOUR ENERGY ASSETS LEGEND

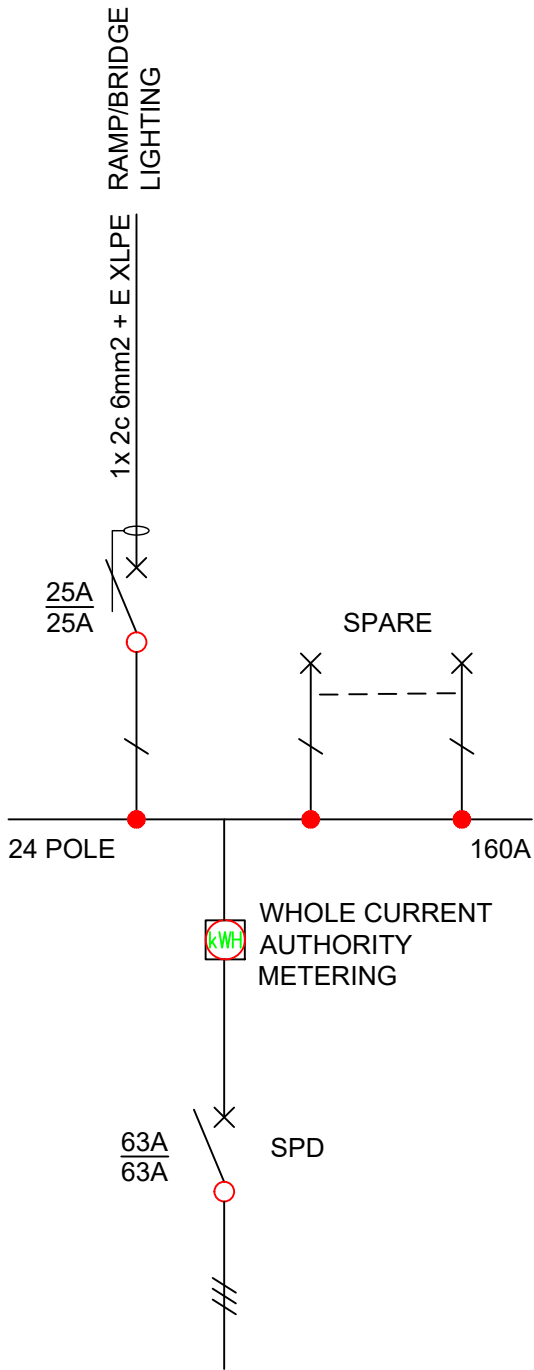
ENDEAVOUR ENERGY STREET LIGHT

ENDEAVOUR ENERGY LV PILLAR

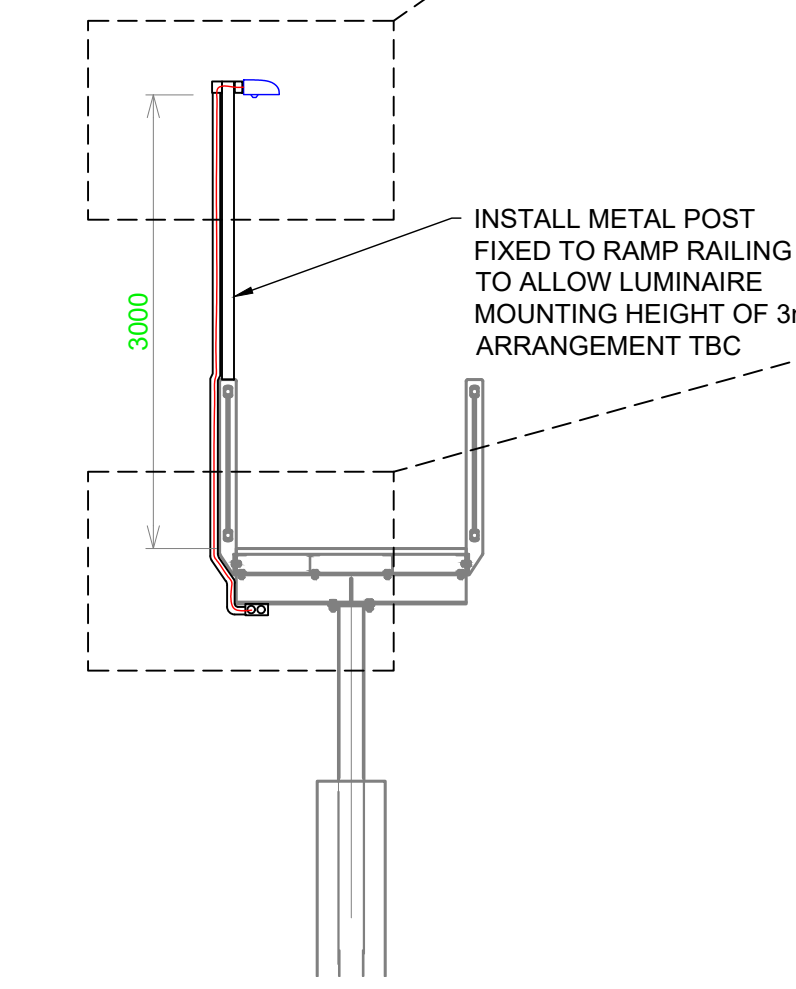
MENANGLE BRIDGE ELECTRICAL SERVICES



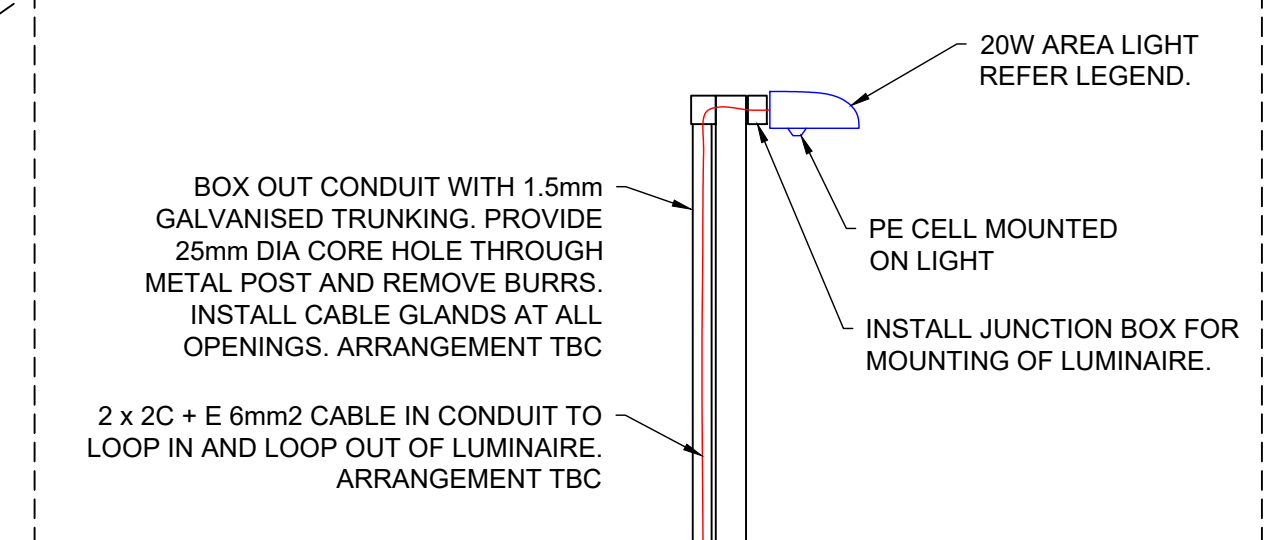
DETAIL 3: DOUBLE LUMINAIRE TYPICAL ARRANGEMENT
SCALE 1:20



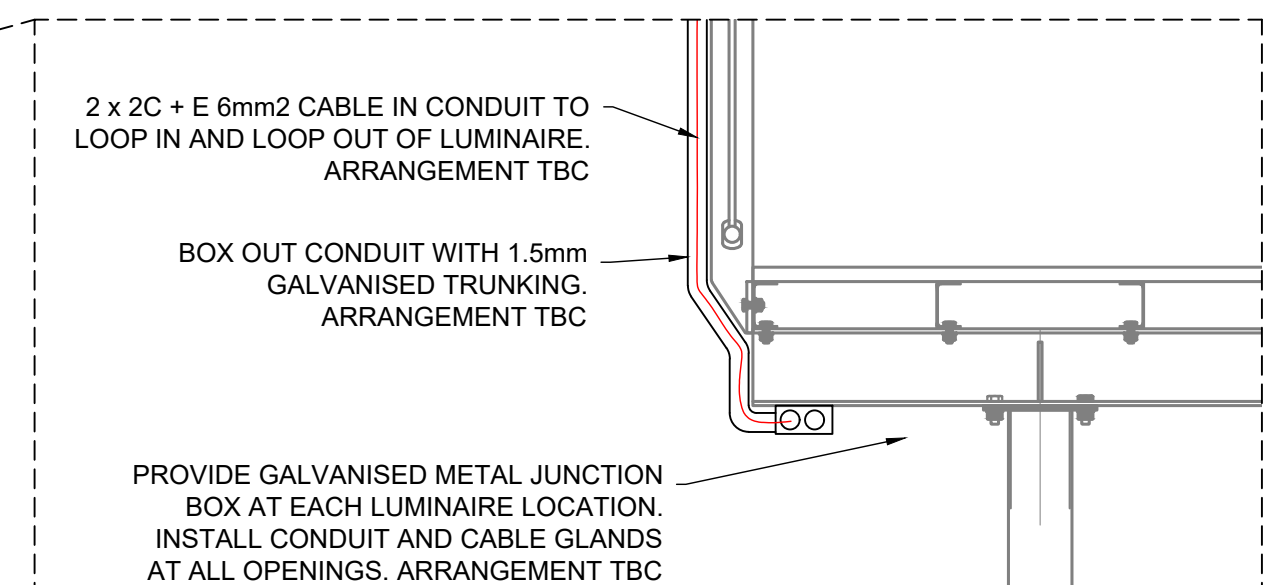
MSB01 - SINGLE LINE DIAGRAM



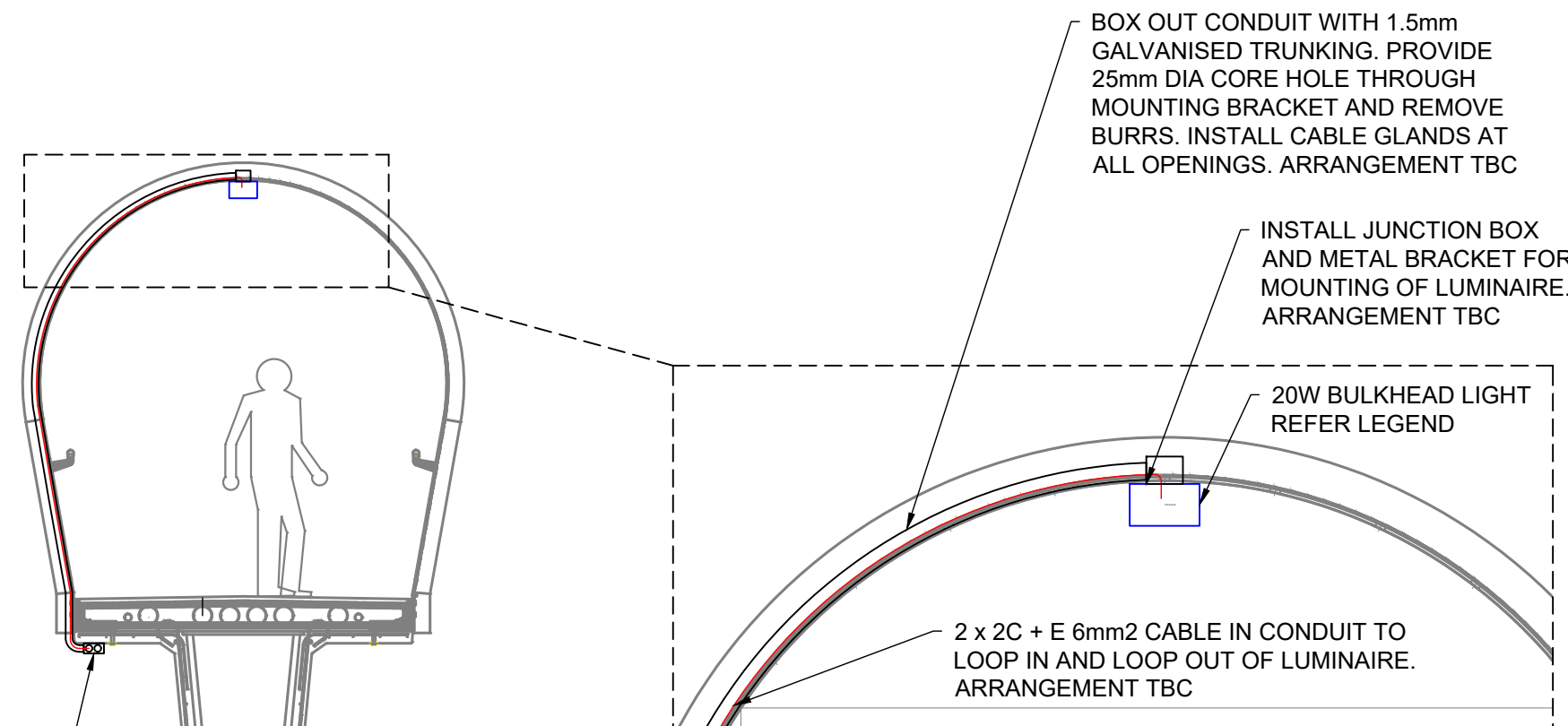
DETAIL 1: RAMP TYPICAL ARRANGEMENT
SCALE 1:50



DETAIL 1A: LUMINAIRE TYPICAL ARRANGEMENT
SCALE 1:20

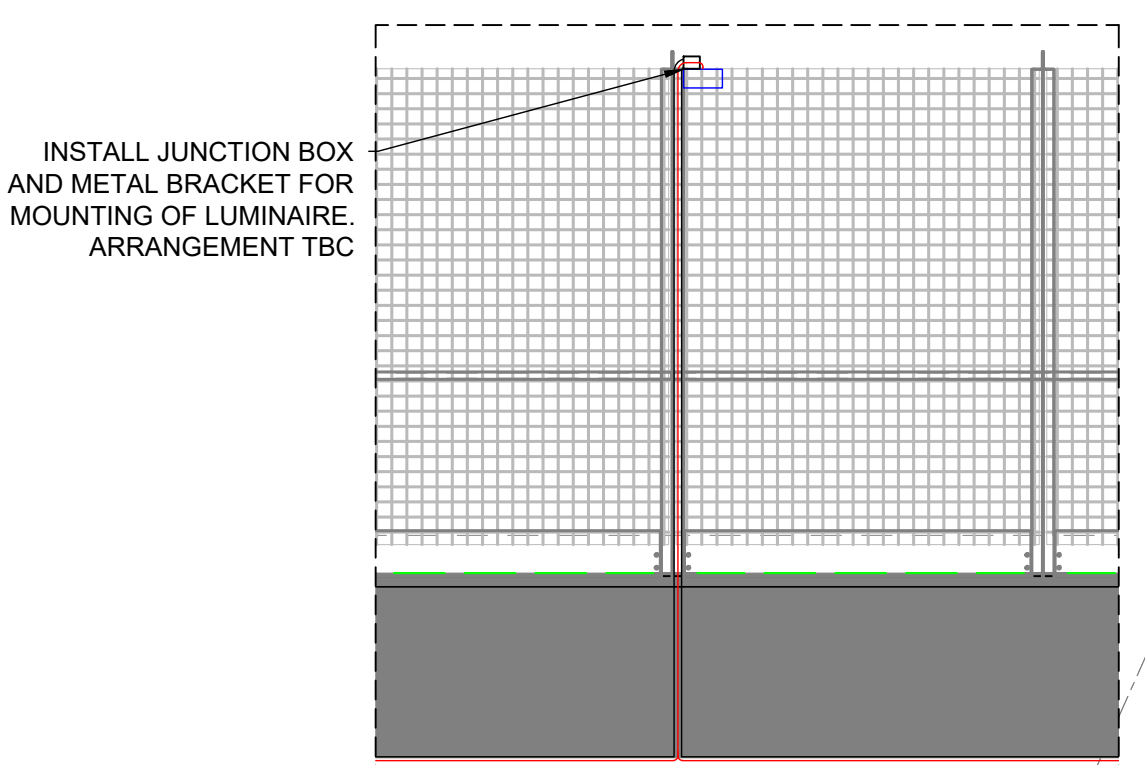


DETAIL 1B: CONDUIT UNDER RAMP TYPICAL ARRANGEMENT
SCALE 1:20

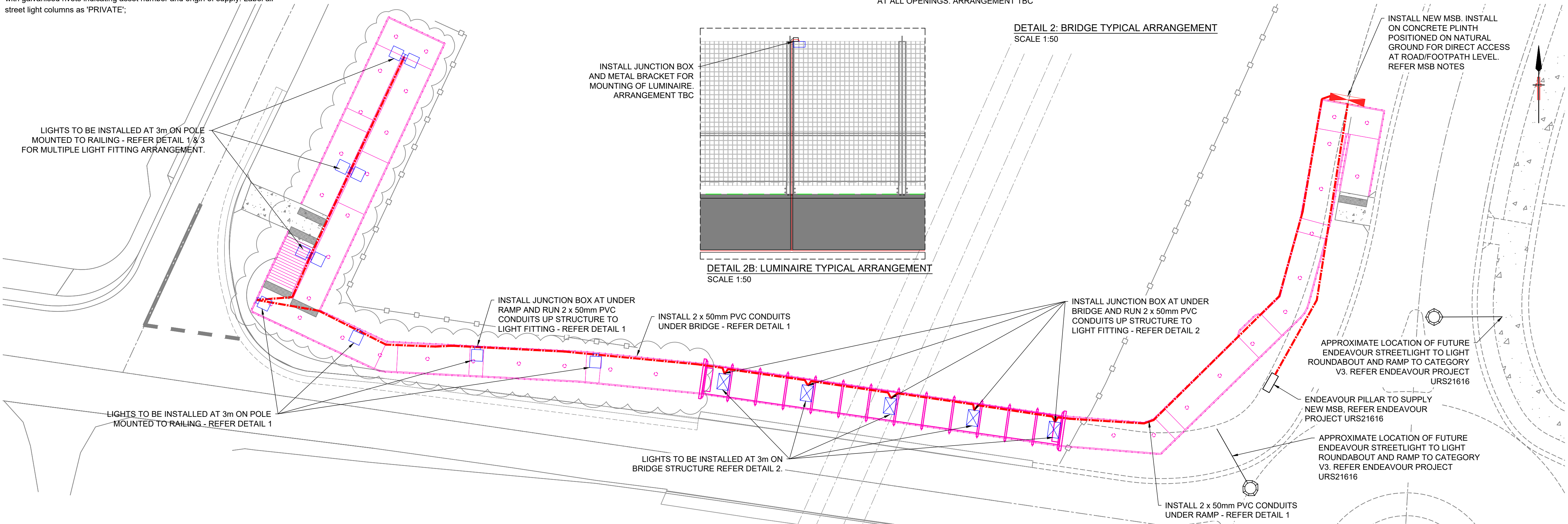


DETAIL 2A: LUMINAIRE TYPICAL ARRANGEMENT
SCALE 1:20

DETAIL 2: BRIDGE TYPICAL ARRANGEMENT
SCALE 1:50



DETAIL 2B: LUMINAIRE TYPICAL ARRANGEMENT
SCALE 1:50



CONSTRUCTION PLAN - SCALE 1:200

Drawing No.:	Size:	Plot Date.:
4153-E100	A1	17.10.22
Date	No.	Description
29.06.21	A	CONCEPT ISSUE FOR REVIEW
01.07.21	B	REVISED ISSUE FOR REVIEW
19.08.22	C	UPDATED BRIDGE & CROSSING DESIGN
29.09.22	D	UPDATED WIDENED WESTERN APPROACH
11.10.22	E	RELOCATED MSB, RAMP CHANGES, ADDED CONDUITS
17.10.22	F	UPDATED LIGHT POSITIONS ON WESTERN RAMP

Client:

mirvac

Civil Consultant:

calibre

Electrical Consultant:

Electricity and Comms Infrastructure and Building Engineering Consultants
Level 3 ASP #2059

EDGEWATER
CONSTRUCTORS

Project:

MENANGLE PEDESTRIAN BRIDGE CROSSING

Drawing Title:

ELECTRICAL SERVICES CONCEPT LIGHTING PLAN

Drawing No.:

4153-E100

Drawn By: **NPA** Scale: **1:200** Rev: **F**

Project No.: **21-4153** Date: **29.06.21**

Do not dimension or scale off this drawing - always refer to architectural plans