

COMMUNITY

Trielle, Yarra's Edge
January / February 2025

UPDATE



Welcome to our bi-monthly newsletter

Our bi-monthly e-newsletter will keep near neighbours informed of upcoming works at Trielle, Yarra's Edge.

E-newsletters will be distributed to our registered database via email every two months.

You can also find our e-newsletters by visiting our website:

<https://yarrasedgecommunity.mirvac.com/community-updates>

What's happening?

Works have recommenced on site following the 2024/2025 site shutdown period.

Fitzgerald Constructions Australia (FCA) have completed Stage 1 of constructing the 130m waterfront promenade. Mirvac Constructions will manage Stage 2 including the delivery of public realm and landscaping.

Mirvac Constructions is concurrently delivering the residential tower, Trielle, where piling works are now complete and civil ground works have commenced.

What's planned for January and February?

- The delivery and installation of a crane is taking place on Friday 24 Jan 7am-7pm and Saturday 25 Jan 8am-7pm as approved by the City of Melbourne Council.
- Civil ground works have commenced, including pile capping and associated lift core works. This will prepare the site for the ground slab pour.
- Following community feedback, plans are underway to widen the Lorimer Street footpath south of the construction site to improve safety (see map for detail). Visibility has been enhanced by adjusting the hoarding.
- Barge in water is anticipated to be dismantled and removed in January.
- Works are progressing on the new Mirvac Trielle Display Suite located within the Wharf Club building. This is anticipated to be complete and open in February.
- Continuation of traffic management measures and detour routes.

Work hours

Work hours are in line with the relevant permits in place and the City of Melbourne's regulations:

**Between 7am and 7pm, Mondays to Fridays.
Between 8am and 3pm, Saturdays.**

If, from time-to-time activities need to take place out of hours, we will obtain the relevant permits from Council and notify our neighbours of these in advance.

Site shutdown

The site will be secured and shutdown for the upcoming public holiday on
Monday 27 January and Tuesday 28 January.

What you might see & hear

Various specialist machinery will be used, including:

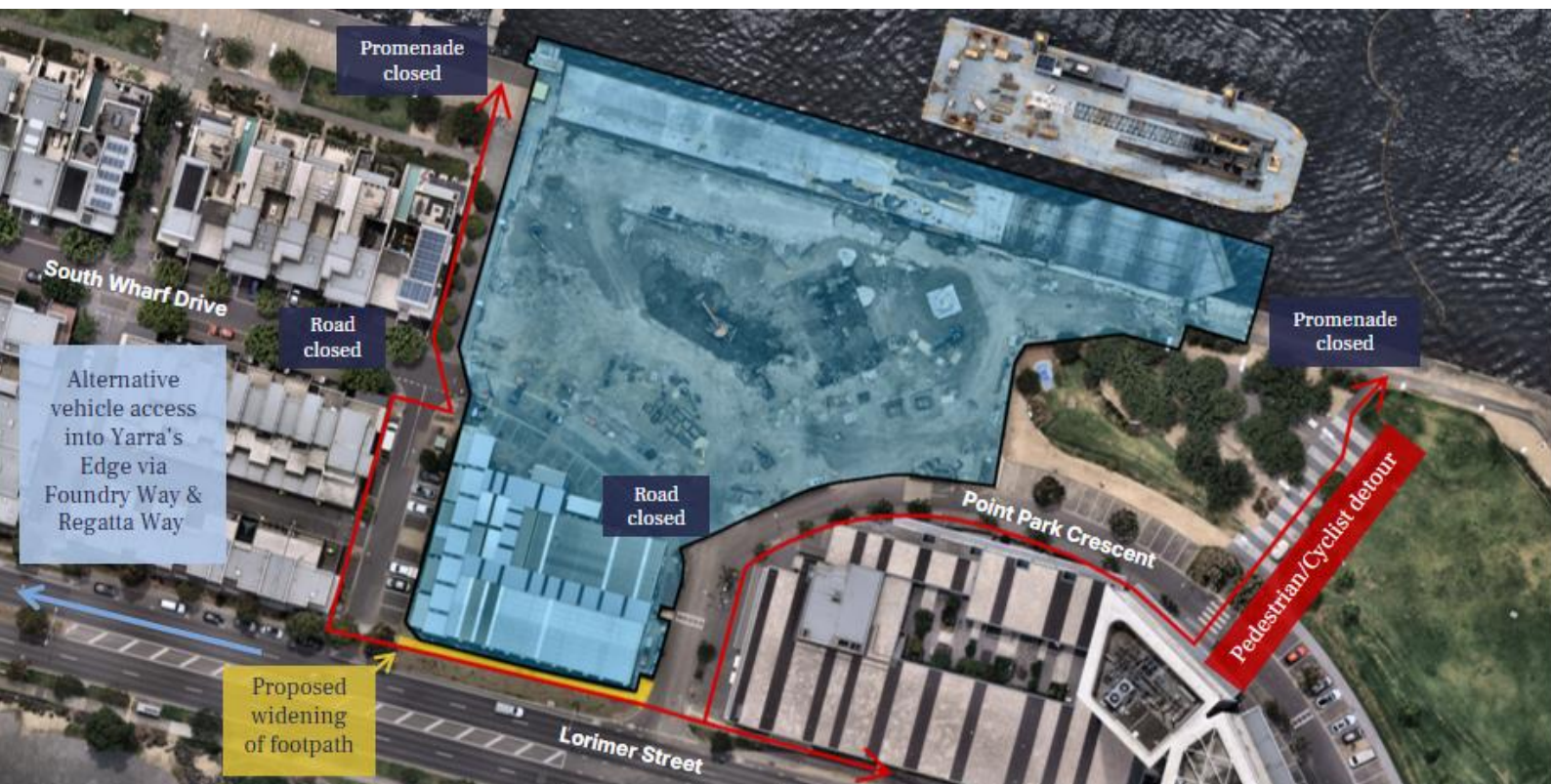
- Crane
- Excavator(s)
- Mobile crane(s)
- Heavy vehicles & cement trucks
- Street cleaning vehicles

You may experience noise and vibration associated with the works on site. All works will comply with the City of Melbourne's Noise and Vibration guidelines.

Mirvac Constructions (Principal Contractor) are considering all mitigation measures to reduce any potential dust generation during works.

Once complete, the new waterfront promenade will feature a widened pathway, an upgraded sealed pavement, and a landscaped public forecourt with seating for the community to enjoy.

Works will restrict access to a section of the waterfront promenade and South Wharf Drive, and a pedestrian / vehicle detour will be required. Please see updated detour route mapped below.



Stay informed

We understand that there will be some impacts to the local community, and we thank you in advance for your patience. Every effort will be made to reduce impacts and disruptions along the way.

If you have any questions about the project, please feel free to contact:



community.yarrasedge@mirvac.com

