

# COMMUNITY UPDATE

Trielle, Yarra's Edge  
November / December 2024



## Welcome to our bi-monthly newsletter

**Our bi-monthly e-newsletter will keep near neighbours informed of upcoming works at Trielle, Yarra's Edge.**

**E-newsletters will be distributed to our registered database via email every two months.**

**You can also find our e-newsletters by visiting our website:**

**<https://yarrasedgecommunity.mirvac.com/community-updates>**

## What's happening?

Construction of the new 130m waterfront promenade infrastructure has well progressed. Fitzgerald Constructions Australia (FCA) have completed marine piling and well underway with the installation of precast beams and planks.

As Principal Contractor, Mirvac Constructions continues to oversee the delivery of the promenade.

Mirvac Constructions is nearing the completion of early piling works to facilitate the construction of the residential tower, Trielle.

## What's planned for November and December?

- Following community feedback, plans are underway to widen the Lorimer Street footpath south of the construction site and adjust the hoarding at these corners to improve safety between pedestrians and cyclists.
- Early piling works on the residential tower are nearing completion with piling machinery anticipated to leave site by late November.
- FCA water-based marine piling works are now complete, with infrastructure works on the new waterfront promenade well underway.
- A tree in the south-west corner of site will be removed, in line with relevant approvals, to ensure safer management of construction vehicles and deliveries.
- Works have commenced on the newly designed Mirvac Trielle Display Suite located within the Wharf Club building.
- Continuation of traffic management measures and detour routes.

## Work hours

Work hours are in line with the relevant permits in place and the City of Melbourne's regulations:

**Between 7am and 7pm, Mondays to Fridays.**  
**Between 8am and 3pm, Saturdays.**

If, from time-to-time activities need to take place out of hours, we will obtain the relevant permits from Council and notify our neighbours of these in advance.

## Planning Update

Mirvac has initiated planning for the delivery of another residential tower at the western end of the Yarra's Edge precinct. This is anticipated to be the final residential tower delivered by Mirvac in the precinct.

We will provide updates as planning progresses.

## What you might see & hear

Various specialist machinery will be used, including:

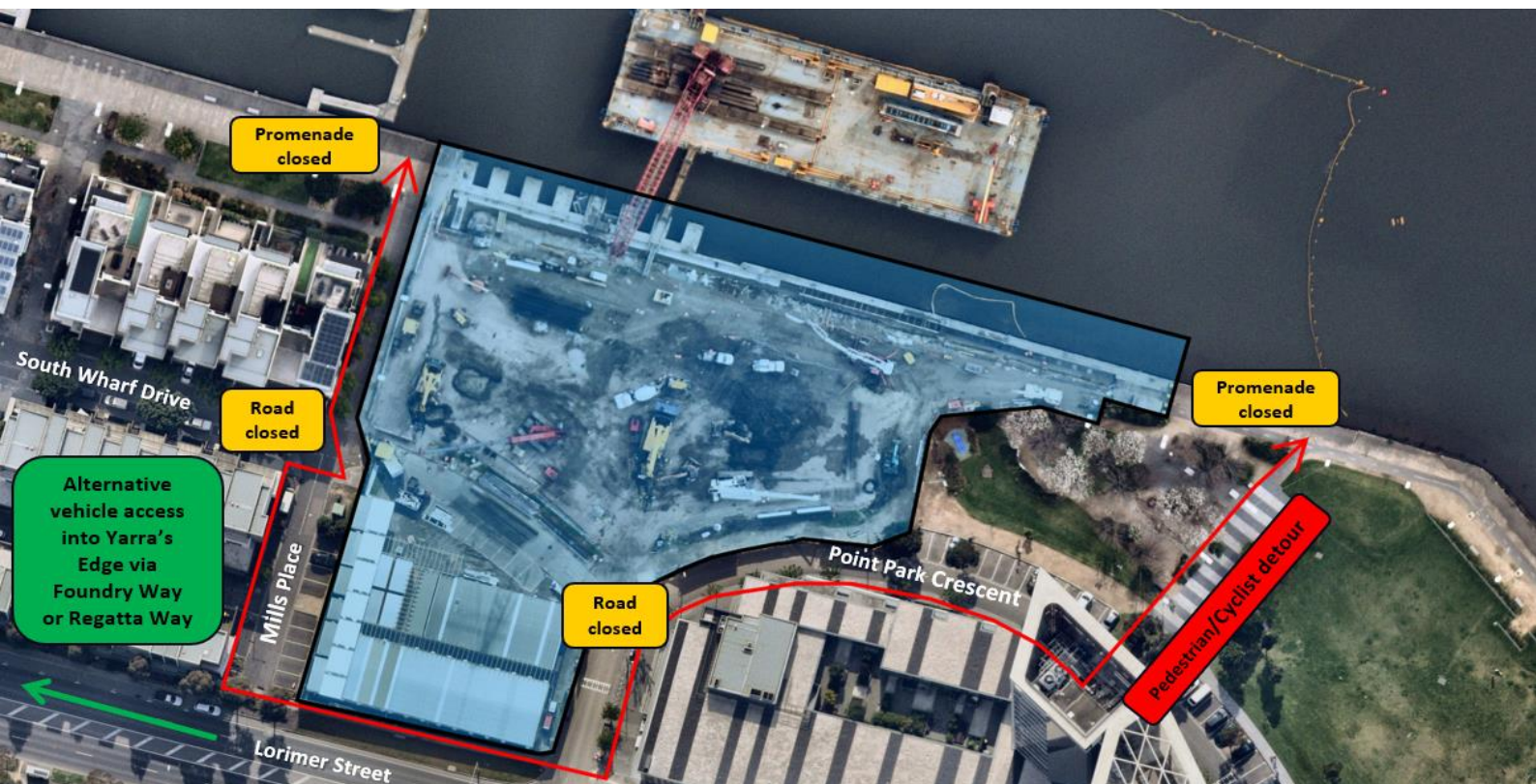
- Excavator(s)
- Mobile crane(s)
- Barge located on water
- Piling Rig(s)
- Heavy vehicles & cement trucks
- Street cleaning vehicles

You may experience noise and vibration associated with the works on site. All works will comply with the City of Melbourne's Noise and Vibration guidelines.

Mirvac Constructions (Principal Contractor) are considering all mitigation measures to reduce any potential dust generation during works.

Once complete, the new waterfront promenade will feature a widened pathway, an upgraded sealed pavement, and a landscaped public forecourt with seating for the community to enjoy.

Works will restrict access to a section of the waterfront promenade and South Wharf Dr, and a pedestrian/vehicle detour will be required. Please see updated detour route mapped below.



## Stay informed

We understand that there will be some impacts to the local community, and we thank you in advance for your patience. Every effort will be made to reduce impacts and disruptions along the way.

If you have any questions about the project, please feel free to contact:



[community.yarrasedge@mirvac.com](mailto:community.yarrasedge@mirvac.com)

