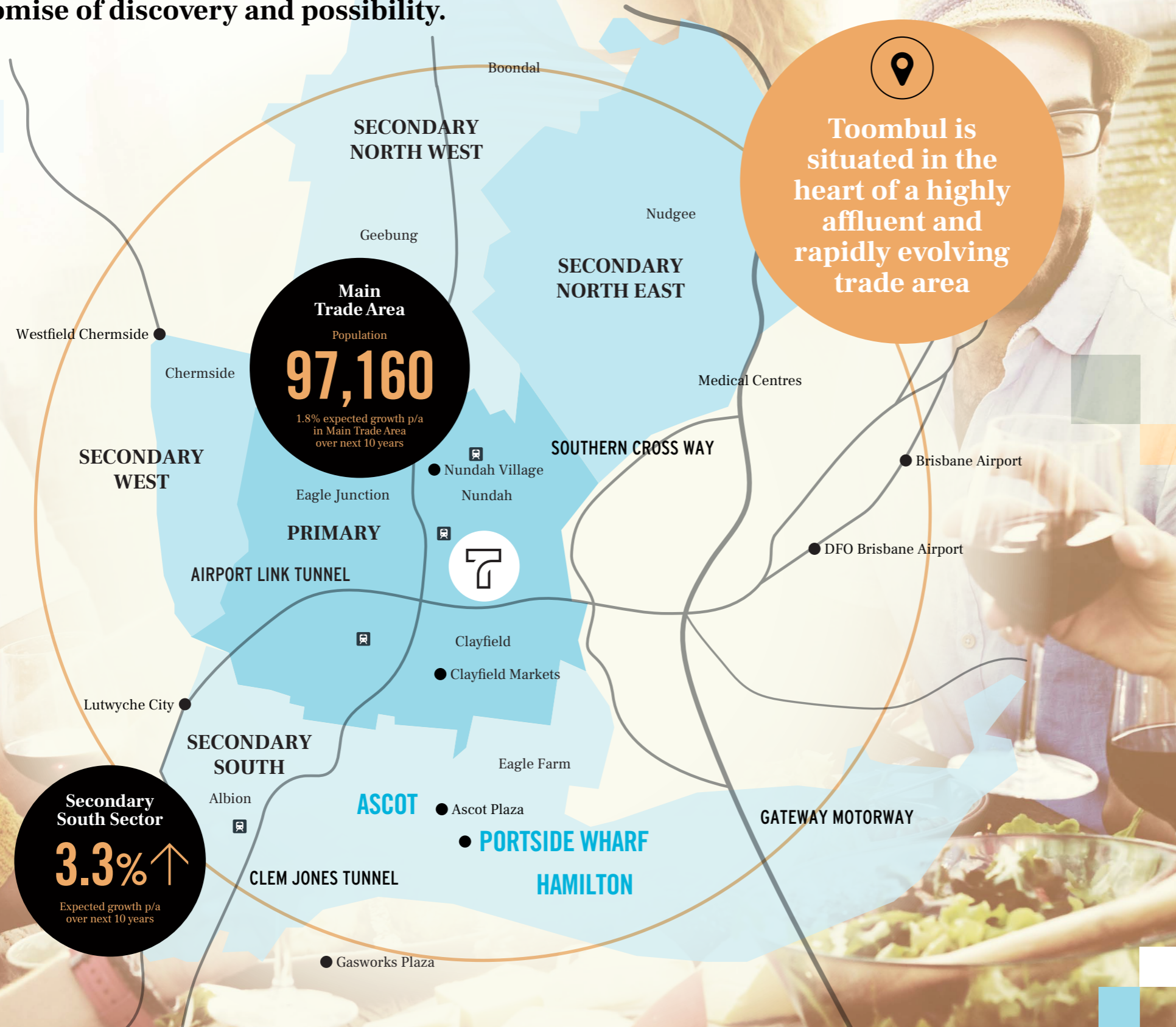


Beyond Dining

URBAN ATTRACTION

Toombul is set to become the new heart of the north. A lodestar that draws all, from far and wide, with the promise of discovery and possibility.



Setting the Scene

Ideally positioned in an affluent, inner-urban location just 7km from Brisbane's CBD, Toombul is centred in a thriving trade area.

Surrounded by a number of Brisbane's most desirable suburbs while also being close to fast-growing trade regions including Brisbane Airport, the well-established site is already visited by 6.2 million people each year with strong growth forecasts.

Add in ease of access with close proximity to public transport and a number of main arterials, Toombul is the prime platform for expansion, creating a new destination in its own right.



4,500
WORKERS
WITHIN 1km
WALKABLE DISTANCE



\$1.7BN
RETAIL EXPENDITURE
BY 2020



\$210M
FOOD CATERING
EXPENDITURE
BY 2020